

# Product Specification



## CKO-LED-500-W White Octagon Strobe 5 LED

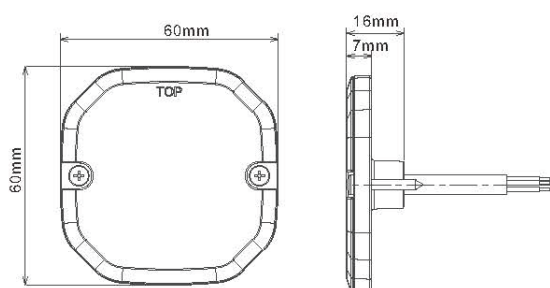


CKO-LED-500-W

### KEY FEATURES

- Colour: White
- Fixing: Bolt or Surface Mount
- Approval: ECE R10 / R65
- Voltage: 10-30V
- IP Rating: IP67
- LEDs: 5
- Patterns: 10 Selectable Flash Patterns
- Dimensions: 60mm x 60mm x 7mm
- Slim Light Head
- Clear Lens
- Aluminium Base
- Polycarbonate Lens
- Synchronisation / alternative synchronisation available

### Product Dimensions Diagram



**FOR MORE INFORMATION, CONTACT OUR SALES TEAM.**

**T:** 020 8863 8333 (OPT1) • **E:** sales@c-ko.co.uk • **W:** www.c-ko.co.uk

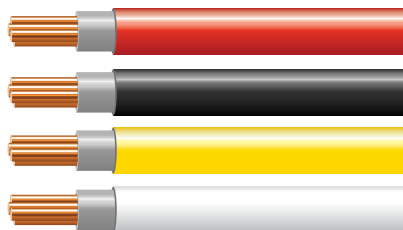
# Product Specification



## White Octagon Strobe 5 LED

### Wiring Information

- **Red:** Power
- **Black:** Ground
- **Yellow:** Pattern / Synchronisation
- **White:** Alternating Synchronisation



Tap yellow to red for under 1 second to change the flash pattern.

#### Grouping for Alternating Flash Synchronisation

Connecting all units with black, red and yellow wires will synchronize all light heads. Touching red wires to the yellow wires for about 5 seconds will change the flash pattern (all heads must be reset individually on the same starting pattern first to remain synced together on the same pattern).

Connecting one unit or multiple units white wires to the red wires will start the alternating flash.

Do not connect the yellow wire to the red wires, all units remain synced together on the same pattern.

If the units are not synchronised with alternating flash, please repeat STEP 1.

#### Grouping for Simultaneous Flash Synchronisation

Connecting all units with black, red and yellow wires will synchronize all light heads. Touching red wires to the yellow wires for about 5 seconds will change the flash pattern (all units must be reset individually on the same starting pattern first to remain synced together on the same pattern).

### Flash Pattern Information

- |           |                  |
|-----------|------------------|
| 1. Single | 6. Flicker       |
| 2. Double | 7. Tenfold       |
| 3. Triple | 8. Combination 1 |
| 4. Quad   | 9. Combination 2 |
| 5. Quint  | 10. Steady On    |



**Warning:** Avoid looking directly at LEDs while they are in operation. Doing so may result in temporary vision impairment or permanent eye damage.

**FOR MORE INFORMATION, CONTACT OUR SALES TEAM.**

**T:** 020 8863 8333 (OPT1) • **E:** sales@c-ko.co.uk • **W:** www.c-ko.co.uk