



THE VEHICLE SAFETY EXPERTS

PRODUCTS
CATALOGUE

Issue 2.1



WELCOME >>

The Vehicle Safety Experts

CKO have been involved in the design, development, and distribution of vehicle safety products and solutions for over 30 years. We work directly with established manufacturers in the UK, Europe, and Far East to meet the safety and leisure requirements of our customers in the commercial vehicle and automotive industries. CKO hold an extensive range of products in stock; with competitive lead times to meet specific customer requirements.

HAVE CONFIDENCE IN YOUR PURCHASE

Our experienced Sales team are on hand to offer you tailored support to meet your needs, and the requirements of your customers. With extensive knowledge regarding DVS and FORS standards, as well as other forms of compliance, CKO always demonstrate clear capability when it comes to facilitating your regulatory standard queries. Our dedicated Technical helpline offers long-term support for our products/solutions, with a professional repair service for warranty items. We aim to offer high-quality products, value for money, and great service. Customer satisfaction is at the core of our business.



**ORDER
ONLINE** >>

Visit our website
for more information:
c-ko.co.uk

Address

CKO Vehicle Safety Experts,
Unit 1, The Hawthorn Centre,
Elmgrove Road, Harrow,
Middlesex, HA1 2RF

Phone

Sales: 020 8863 8333 (Opt 1)
Accounts: 020 8863 8333 (Opt 2)
Technical: 020 8863 8333 (Opt 3)

Email

sales@c-ko.co.uk
accounts@c-ko.co.uk
technical@c-ko.co.uk

CONTENTS >>

Category 1 - Introduction

Introduction	3
Warranty	4
Compliance	5
Live View	7

Category 2 - DVR

Digital Video Recording	11
DVR Accessories	16

Category 3 - Dash Cameras

Dash Cameras	19
--------------	----

Category 4 - Cameras

AHD Cameras	25
Brake Light Cameras	32
Number Plate Cameras	41
D1 Cameras	43

Category 5 - Monitors

Monitors	48
Monitor/Camera Kits	52
Mirror Monitors	55

Category 6 - Sensors

Proximity Sensors	62
Parking Sensors	64

Category 7 - Alarms & Lighting

Warning Alarms	66
Lighting	70

Category 8 - Heated Seats

Heated Seats	75
--------------	----

Category 9 - Accessories

USB Chargers	77
Control Units	79
Brackets	81
Cables	82

Category 10 - Consumables

Consumables	98
-------------	----

Category 11 - Tools

Tools	111
-------	-----

Category 12 - Cash Boxes

Cash Boxes	114
------------	-----

CKO ARE AFFILIATED WITH:



SUPPORTER



ABOUT US >>

> VEHICLE SAFETY EXPERTS

With over 30 years' experience, CKO are dedicated to providing you with the latest vehicle technology products needed to improve your fleets safety, efficiency, and compliance. We offer a variety of solutions for trucks, vans, passenger vehicles, motorhomes, and more. Discuss your requirements with our specialist team – not only will they find the ideal solution to meet your needs, but CKO can also tailor our solutions and tweak our products where required.

CKO offer an extensive range of cameras, sensors, alarms, monitors, and digital video recorders (DVRs). Our DVRs can record via three different avenues (SD card, hard drive, or through Live View), ensuring that incidents can be managed swiftly, claims can be supported or rebuffed, and driver behaviour can easily be monitored.

These products all individually contribute when it comes to significantly reducing the likelihood of collisions/accidents, and therefore reduce the need for time-consuming (and costly) repairs. When combined, these products produce a complete system; allowing you to clearly observe the rear, front, and sides of your vehicle when reversing and manoeuvring.

Securely stream, review, and download captured video footage through our Live View system – available as desktop software or a mobile application (on Android or iOS). Live View has the ability to provide immediate alerts when a vehicle has been involved in an accident. This information is detrimental when managing a fleet, as your team can immediately capture and store all relevant video footage of the incident for later use, rather than discovering the incident afterwards and having to spend hours filtering through previous footage.



>> For more information, please view pages 7-10.

WARRANTY INFORMATION >>

> TECHNICAL KNOW-HOW AND WARRANTY RETURNS

Buying from CKO brings you the additional reassurance of our in-house Technical team. We evaluate and test all our products before they go to market and undertake repairs on warranty items directly in our Technical department.

This, together with our Technical helpline, allows us to provide a full backup service to our customers who can have the confidence in our long-term support and warranty responsibilities.

> WARRANTY TERMS AND CONDITIONS

CKO warrants all goods to be free from defect in material and workmanship in normal use, provided that they have been installed and operated in accordance with the instructions supplied. The start date of all warranties is the date of delivery to the purchaser, unless otherwise agreed in writing by CKO. The period during which the 12-month applies is stated above. CKO make no other warranty, express or implied, with respect to the goods, their marketability, quality, or fitness for any particular use or purpose. In particular, but without prejudice to the general provisions of the conditions of sale, no responsibility is assumed for incidental or consequential loss by reason of any warranty express or implied.

Full details of CKO's Terms and Conditions are contained on our website www.c-ko.co.uk. CKO International Limited reserves the right to change terms, conditions, and specifications shown in this catalogue at any time. All Information within this catalogue was correct at time of going to print.



COMPLIANCE >>

> WHY COMPLIANCE MATTERS

The level of public scrutiny that has come to focus on the commercial vehicle sector in the last five years has resulted in a fundamental shift. It is now a commercial necessity for Fleet Operators to invest in safety equipment, which will enable them to continue to gain access to construction sites and win contracts on infrastructure projects (such as Crossrail and HS2). Soon, it will be impossible to operate without being able to demonstrate compliance with established standards. With over 30 years' experience, CKO is here to take the trouble out of meeting these standards - ensuring that your fleet is compliant for operation within the modern commercial vehicle world.

> DVS COMPLIANCE

The Direct Vision Standard (DVS) is the first legislation of its kind. Since October 2020, all goods vehicles over 12 tonnes require a permit to drive into Greater London (including vehicles from outside of the UK). Enforced by Transport for London (TfL), the legislation is based on a 'star rating', indicating how much a driver can see from the cab in relation to other road users. The vehicle manufacturer will issue a star rating for your vehicle. This rating (0-5) is based on how the vehicle left the production line, and will not consider any aftermarket safety systems that have been fitted. By 2024, the DVS minimum star requirements will increase to three stars.

If your HGV is rated zero stars, you will need to make your vehicle safer by fitting it with safe system improvements. To apply for a permit as a zero star rated vehicle, you need to fit your vehicle with all the safety equipment listed below.

To improve indirect vision, and help drivers see near the vehicle, you need:

- >> Class V and VI mirrors
- >> A fully operational camera monitoring system
- >> A sensor system with driver alerts

To warn road users of intended manoeuvres you need:

- >> An audible vehicle manoeuvring warning for left turns (or right turns if the vehicle is left-hand drive)
- >> Warning signage

To minimise the physical impact of a hazard:

- >> Side-underrun protection



> FORS COMPLIANCE

The Fleet Operator Recognition Scheme (FORS) is a voluntary accreditation scheme that recognises safer, greener, and more efficient fleet operations. FORS Bronze, Silver, and Gold membership provides progressive accreditation, enabling Operators to achieve exemplary levels of best practice. FORS members stand out from the crowd, work to standards above the legal minimum, and have access to a wide range of exclusive benefits that provide a real competitive advantage.

FORS is relevant to commercial operators in the three classes of Trucks (V5), Vans (V2), and Passenger Carrying Vehicles (PCV – V6). Specific measures apply to each class.

Trucks: commercial vehicles over 3.5 tonnes gross vehicle weight

Vans: commercial vehicles of 3.5 tonnes gross vehicle weight or under

PCV's: any vehicle with 8 or more passenger carrying seats

CKO can assist you in meeting all your FORS safety requirements, by offering a range of products and solutions that allow Fleet Operators to measure, monitor, and improve performance.



LIVE VIEW

INTRODUCTION

Live View is a 4G based service offered by CKO, enabling customers to view individual vehicles and whole fleets with real-time and historical footage. We offer monthly and annual payment terms on a 12-month contract.

This package includes:

- » PC software
- » iOS and Android phone software
- » Device SIM
- » Data server
- » Customised email alerts and notifications
- » Telephone and remote access support
- » UK networks



COMPLETE VISIBILITY FOR FLEET MANAGERS

The Live View system offers secure, multi-network, real-time video-streaming and GPS tracking for your single or multiple vehicle fleet. With our system, any user can view up to 16 separate streams at any one time. With two users, you can double the number of streams to 32.

Using the registration number as the default code and the depot to allocate the group, it is simple to classify a fleet of vehicles and enable separate user permissions to access different sets of information.

Not only does the Live View system support efficiency and control over your fleet, but it also aids in increasing vehicle safety - both for your drivers and the general public.



LIVE CCTV



GEO FENCE



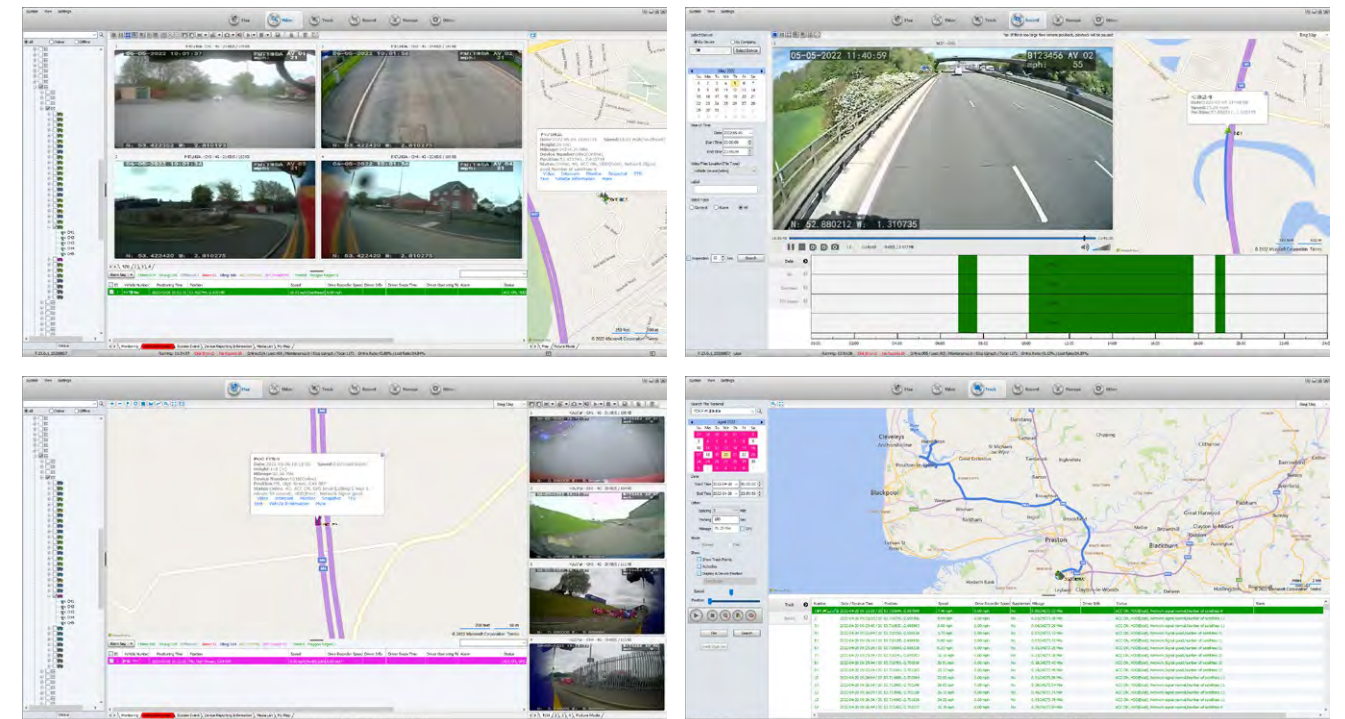
TRACKING



FUNCTIONALITY

Our system offers market-leading functionality:

- » Vehicle tracking by GPS – current location and speed of the vehicle can be seen
- » Alerts regarding faults – such as geo-fencing breaches, failing hardware, switch to SD card recording, and video loss on channel (e.g. faulty camera).
- » Remote download footage can be viewed through mobile phone or PC
- » Historical footage – downloadable footage for the last month
- » Change settings remotely – settings such as camera resolution, date, time, and recording settings can be changed remotely. Software updates can also be sent remotely.
- » Multiple vehicle viewing – the interface can show 32 live and recorded streams at one time, meaning that many fleets can be managed on a single interface.
- » SOS button – the introduction of our SOS button on the DVR means if an incident occurs, the driver can push the button, and the central office will be immediately notified. This will allow your team to quickly and easily investigate the issue. As well as time and date, a video clip of between 1 to 2 minutes can be saved on the server from when the alarm is pushed on the device.
- » Geofencing – multiple fences can be applied and notifications will alert the user when a vehicle enters or leaves those zones. Not only does this provide an anti-theft security feature, businesses can also use geofencing to monitor employees in the field, automate time cards and keep track of individual vehicles over particular time periods.



LIVE VIEW >>

NOTIFICATIONS

Without Live View, if your vehicle was involved in an incident, you would only hear about what had happened once your driver returns to your site and reports the incident. With our Live View system, you will receive notifications tailored to your own specification. In case of an incident, an alarm will be displayed on the Live View page or direct to your mobile phone. It does not interrupt the user view; but like an exception report, it can alerting users that action is required.

HISTORIC TRACKING

The real-time vehicle locator can be expanded to show single or multiple vehicle locations. If a vehicle is offline, the last location where it was connected will be displayed.

The 'Track' tab provides the historic location, speed, and DVR status. Usefully, it can map the historic route, showing where the vehicle has travelled in 30 second intervals. It is possible to search this function by time and date. The information is stored on our dedicated secure server, meaning that vehicles that are not online can also be checked. In terms of vehicle safety and security, this is an added bonus of the Live View system. When added to the 'Status' of the DVR, the Live View system can help to highlight issues of suspected device tampering or fuel theft.

REMOTE DOWNLOAD & HISTORIC VIEWING

Our standard tariff comes with a fair-use cap; however, additional data can be purchased in bundles. Historic recordings can be remotely downloaded or streamed online by pinpointing the desired time and date. This allows the user to act quickly in response to incident reports. The file is saved in several ways - on the local device and on our server. Single or multiple channels can be downloaded and saved in a secure format, which is only playable on our local PC software (where it can be converted to AVI if required).

Photos can also be viewed using the 'Record' tab. The photos are snapshots that can be linked to the alarms and other custom settings from the server side. The photos are saved to our dedicated secure server.

Alarm inputs can be linked to different events (e.g. the rear door opening for a delivery). This type of setting does require additional wiring and configuration, but greatly enhances the functions available and can be tailored for the specific needs of the business.

EMAIL NOTIFICATION

We recommend that email alerts are sent to a dedicated person in your company. In the event of equipment failure, this provides you with a fail-safe beyond the driver's daily walk-around check. Under FORS Standard v5, daily checks of electronic safety is now compulsory. In the event of DVR video loss or hard drive failure, an email alert can be sent directly to designated contacts within your organisation.

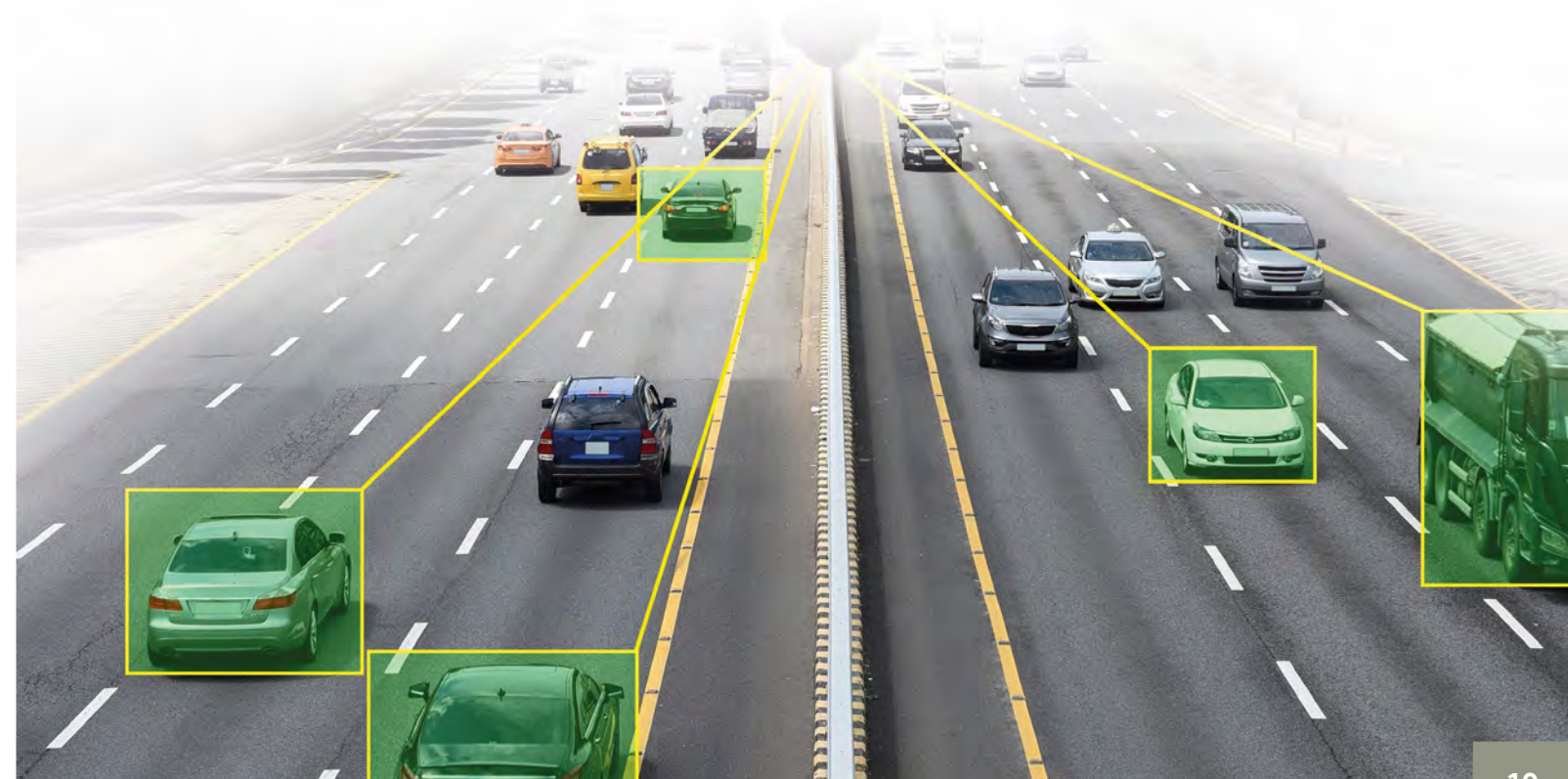
After understanding your needs, and with your permission, email alerts can be set up to multiple email addresses per vehicle or per group of vehicles. Custom input alarms can also be set to report by email at certain times, or when an SOS button is pressed. As part of the initial set up, we can talk through your business needs and customise the settings to ensure that you get the most out of our Live View system.

PHONE APP

The phone app provides the most basic information compared to the feature-packed desktop version. However, for quick and easy reference, the phone app allows users to check if vehicles are online, view the cameras in real time, and see their current or last location.

CHANGING DVR SETTINGS

Our Live View desktop application allows DVR configuration settings to be changed. Settings - like alarm triggers, camera types and many others - can be altered without having to be on site with the vehicle. Current settings can also be displayed. Making changes to settings after installation may be advantageous to tweak the systems usability, or when new features become available. The DVR must be connected to Live View to access this function. User access control levels can be set so that settings can only be altered by those with the necessary permissions, securing alterations and ensuring consistency across the fleet.





CATEGORY 2

Digital Video Recording



BENEFITS

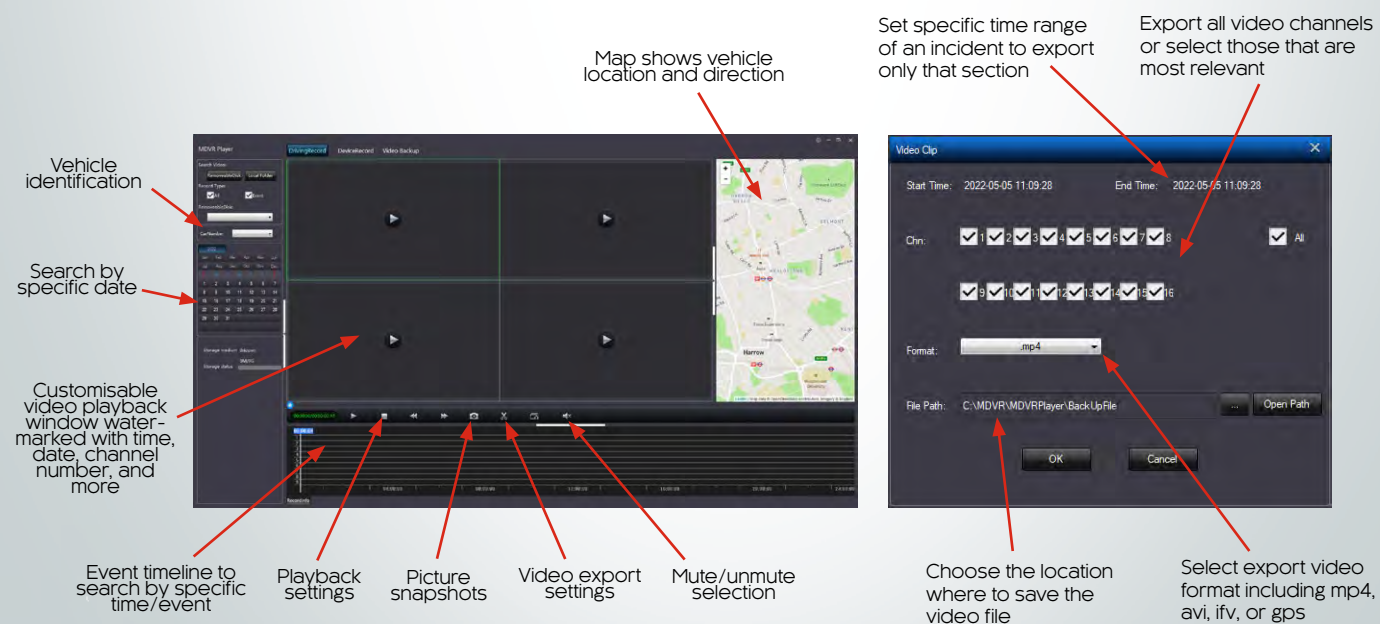
Safety

Monitor driving ability and standards to improve driver manoeuvring, visibility, and concentration. Can also be used to facilitate safe loading and unloading practices.

Protection

Offers security and damage prevention from crash-for-cash, inflated/fraudulent claims, and unjustified personal injury claims.

- Record up to 8 channels of video and audio, plus 2 IPC
- Built in GPS for vehicle location, speed, and time which is also watermarked including vehicle registration on the video footage
- Built in 3-Axis G sensor to detect vehicle impact, harsh braking, and rapid acceleration
- Customisable alarm inputs to record events and automatically view selected cameras on screen, for example to display side camera when indicating
- Alarm output to trigger other devices
- Intelligent voltage protection to turn the DVR off at specified parameters
- Options for time sync, with GPS and automatic daylight-saving time switch
- Multiple power modes - delay switches on with the vehicle's ignition and off after a customisable point, timing turns on and off at set times. Other options available to keep the DVR on and switch the cameras off.
- Customisable recording options for recording selected channels when the ignition is on/off
- Records in AHD 1080p/720p or D1 camera format, with individually selectable channels
- SD card back up function
- Snap shot image alarm function. Export config files by USB for fleet continuity
- Cameras can be mirrored, flipped, and orientated on the DVR



DVR / Device Comparison



Front of product



Front of product



Front of product



Front of product



Back of product



Back of product



Back of product



Back of product

DVR COMPARISON

	AHD-100	AHD-401	AHD-601	AHD-801
Recording				
Max Resolution	720p (1280 x 720)	1080p (1920 x 1080)	1080p (1920 x 1080)	1080p (1920 x 1080)
Channels	4	4	6	8
Audio	✓	✓	✓	✓
Video Compression	H.264 Encrypted AVI	H.264 Encrypted AVI	H.264 Encrypted AVI	H.264 Encrypted AVI
AHD Compatible	✓	✓	✓	✓
IPC Compatible	X	1 Channel	1 Channel	1 Channel
AV in / out				
Video input	4 x 4 Pin aviation	4 x 4 Pin aviation	6 x 4 Pin aviation	8 x 4 Pin aviation
Video output	4 Pin aviation, VGA	4 Pin aviation, VGA	4 Pin aviation, VGA	4 Pin aviation, VGA
Audio input	4 x 4 Pin aviation	4 x 4 Pin aviation	6 x 4 Pin aviation	8 x 4 Pin aviation
Audio output	4 x 4 Pin aviation	4 x 4 Pin aviation	6 x 4 Pin aviation	8 x 4 Pin aviation
OSD	1 / 2 / 4	1 / 2 / 4	1 / 2 / 4 / 6 / 9	1 / 2 / 4 / 6 / 9
Network streaming				
Ethernet Port	✓	✓	✓	✓
Wi-Fi	Optional	Optional	Optional	Optional
4G Compatible	Optional	Optional	Optional	Optional
Mobile App	Android / iOS	Android / iOS	Android / iOS	Android / iOS
Storage / Backup				
HDD / SSD	X	2.5" SATA II (2TB max)	2.5" SATA II (2TB max)	2.5" SATA II (2TB max)
SD Card	2 x SDxC (128GB max)	1 x SDxC (128GB max)	1 x SDxC (128GB max)	1 x SDxC (128GB max)
Backup	USB 2.0 / Network	USB 2.0 / Network	USB 2.0 / Network	USB 2.0 / Network
Peripheral				
Lockable	✓	✓	✓	✓
GPS	✓	✓	✓	✓
G-Sensor	✓	✓	✓	✓
Timer off Delay	Up to 24 hours	Up to 24 hours	Up to 24 hours	Up to 24 hours
HDD / SD Failure Warning	✓	✓	✓	✓
Motion Detection	X	X	X	X
Camera Full Screen Trigger	✓	✓	✓	✓
Split Screen Camera Trigger	X	✓	✓	✓
Remote Control	✓	✓	✓	✓
USB Port	USB 2.0	USB 2.0	USB 2.0	USB 2.0
Other				
Power output	12v	12v	12v	12v
Power input	8 - 36v (DC)	8 - 36v (DC)	8 - 36v (DC)	8 - 36v (DC)



DVR / Device Comparison



Front of product



Front of product



Front of product



Back of product



Back of product



Back of product

DVR COMPARISON

	DVR-4SD	DVR-4HD	DVR-8HD
Recording			
Max Resolution	1080P (1920 X 1080)	1080P (1920 x 1080)	1080P (1920 x 1080)
Channels	4	4 (plus 1 IPC)	8 (plus 2 IPC)
Audio	√	√	√
Video Compression	H.265+ Encrypted AVI	H.265+ Encrypted AVI	H.265+ Encrypted AVI
AHD Compatible	√	√	√
IPC Compatible	X	1 Channel	2 Channel
AV in / out			
Video input	4 x 4 pin aviation	4 x 4 pin aviation	8 x 4 pin aviation
Video output	4 pin aviation, VGA	4 pin aviation, VGA	4 pin aviation, VGA
Audio input	4 x 4 pin aviation	4 x 4 pin aviation	8 x 4 pin aviation
Audio output	4 pin aviation	4 pin aviation	4 pin aviation
OSD	1 / 2 / 4	1 / 2 / 3 / 4 / 5	1 / 2 / 3 / 4 / 6 / 8 / 9 / 12
Network streaming			
Wi-Fi	Optional	Optional	Optional
4G Compatible	Optional	Optional	Optional
Mobile App	Android / OS	Android / IOS	Android / IOS
Storage / Backup			
HDD / SSD	X	2.5" SATA II (2TB max)	2.5" SATA II (2TB max)
SD Card	2x SDxC (256GB max)	1x SDxC (256GB max)	1x SDxC (256GB max)
Backup	USB 2.0 / network	USB 2.0 / network	USB 2.0 / network
Peripheral			
Lockable	√	√	√
GPS	√	√	√
G-Sensor	√	√	√
Timer off Delay	Up to 24 hours	Up to 24 hours	Up to 24 hours
HDD / SD Failure Warning	√	√	√
Motion Detection	X	X	X
Camera Full Screen Trigger	√	√	√
Split Screen Camera Trigger	X	X	X
USB Mouse Control	√	√	√
Remote Control	Optional	Optional	Optional
USB Port	USB 2.0	USB 2.0	USB 2.0
Other			
Power output	12v	12v	12v
Power input	8 - 36v (DC)	8 - 36v (DC)	8 - 36v (DC)



DVR / Devices



DVR-4SD 1080P (1920 X 1080)



Video input: 4 x 4 pin aviation
Video output: 4 pin aviation, VGA
Audio input: 4 x 4 pin aviation
Audio output: 4 x 4 pin aviation
OSD: 1 / 2 / 4





DVR / Devices



DVR / Accessories



DVR-4HD



1080P (1920 x 1080)

Video input: 4 x 4 pin aviation
 Video output: 4 pin aviation, VGA
 Audio input: 4 x 4 pin aviation
 Audio output: 4 pin aviation
 OSD: 1 / 2 / 3 / 4 / 5

DVR-8HD



1080P (1920 x 1080)

Video input: 8 x 4 pin aviation
 Video output: 4 pin aviation, VGA
 Audio input: 8 x 4 pin aviation
 Audio output: 4 pin aviation
 OSD: 1 / 2 / 3 / 4 / 6 / 8 / 9 / 12

CT-TRAY



Spare DVR Caddy

Supplied without media installed
 Please note that the DVR needs to format new media to allow recording to begin
 USB 2.0 Type B connection on rear

DVR-SATA-USB



USB Lead

Connection from SSD to PC
 USB to SATA
 USB 3.0

DVR-MOUSE



DVR Mouse

USB Mouse for DVR configuration
 Optical Sensor
 Compact Design

DW-ANT-FLAT



4G Antenna

4G Antenna for DVR
 Internal antenna
 SMA Connector



CT-REMOTE



Spare Remote Control for DVR
Supplied with battery
Additional batteries also available

CT-USB-LEAD



Connection from
CT-Tray to PC
USB 2.0 Type A to Type B

DVR-MIC



Audio microphone for DVR
4Pin aviation connection
Audio / Video Splitter lead included

DVR-3G/4G-ANT



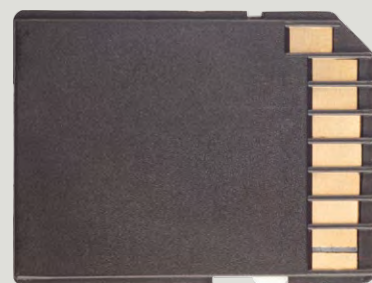
External 3G / 4G Antenna
SMA Male connection

2.5" Solid State Drive



See Price List for P/N
On factory settings a DVR will use 1.2GB per hour per channel at 720p
Solid state drive - recommended for DVRs
5-year manufacturer warranty
Available in 1TB, and 2TB capacity
7mm - SATA III-6Gb/s

SD Card



See Price List for P/N
Available in various memory capacity
Can be used with our DVRs to record footage
We recommend 64GB, on factory settings the DVR will use 650MB per channel per hour as recording quality is reduced
Function must be enabled on DVR to switch to SD card recording in the unlikely event of hard drive failure

DVR-A1-ANT



External Multipurpose Antenna
4G, 3G, Wi-Fi and GPS 3M adhesive and fastened by three self-tapping screws
120mm diameter
3metre lead
SMA Male connection

CT-SWITCH



Illuminated Incident Switch. Push to make switch
When pressed alerts operator of an event
Dimly illuminated to show DVR has power
Includes label
22mm hole diameter
12 Volt



CATEGORY 3 Dash Cameras

DC-DVR-E9

Front and Rear Full HD Dash Camera Kit



Offering greater visibility around your vehicle when driving and reversing, allowing you to capture incidents.

2 Cameras

Rear Video Resolution: 1080p @ 25fps

Rear View Angle 140°



DASH CAMERAS

DC-DVR-E9-F



Front Full HD Dash Camera

1 Camera
Video Resolution: 1080p @ 30fps
Image Sensor: Sony Starvis IMX307
View Angle: 145°
Wi-Fi: 802.11/b/g/n
External smart GPS
3-Axis Gravity G-Sensor
Recording modes: Driving/Event/Parking/Photo
Up to 128GB micro SD card, format free
Memory Format: TAT included
Power Input: 12V to 24V (12V@230mA)
Working Temperature: -20° to 65°
High temperature cut off
Low power car battery protection
Voice recording through built in MIC
Vocal guidance through built in speaker

MyDean software/mobile app (for Android and iOS) included. Allows you to preview, download, and playback video footage.



Optional additional cameras for

Front Full HD Dash Camera / DC-DVR-E9-F

DC-DVR-E-RCAM



External Rear Camera

Second external camera option.

DC-DVR-E-IR



Internal IR Camera

Second internal IR camera option.

DC-DVR-E-REAR



Internal Rear Camera

Second internal camera option.



DASH CAMERAS

ROADHAWK-DC3-DASHCAM

Front Facing Dash Camera



Available on special order only.

- | | |
|--------------------------|-----------------------|
| 1 Camera | Optional Tamperproof |
| 120° FOV | Cable |
| Internal GPS | 30 FPS |
| G-Shock & Speed | 4MP |
| 1080p | Built in Microphone |
| 128GB Max. | Optional Event Button |
| OmniVision OV4689 | 8GB TF Card Included |
| Optional Lockable Casing | |

ROADHAWK-LOCK

Tamperproof Case



ROADHAWK-HARDWIRE

Hardwire Kit



DASH CAMERAS

MIVUE-812

Front Facing Dash Camera



- 1 Camera
- 2.7 Inch Display Screen
- Camera Resolution: WQHD 2K 1440p @ 30fps, 1080p @ 60fps, 1080p @ 30fps
- 140° Wide Angle View
- 5M Video Sensor
- F1.8 Aperture Lens
- 3-Axis G-Sensor
- GPS Tracking
- Safety Camera Warnings
- Advanced Driver Safety Alerts
- Smart Parking Mode (Requires SmartBox III)
- MicroSD Card V (Recommend Class 10 microSD card up to 128 GB)

MIO-C380DUAL

Front & Rear Facing Dash Camera



- 2 Cameras
- 130° FOV
- Internal GPS
- G-Shock & Speed
- 1080p
- Safety Camera Warnings
- 128GB Max.
- SONY CMOS
- 30 FPS
- 2MP
- Built in Microphone
- 2 Inch Display
- Park Mode



DASH CAMERAS



DC-DVR-Q800



Front Facing Dash Camera

1 Camera
Resolution: Front – 2K QHD
(2560 x 1440)
5.14MP Sony STARVIS
Frame Rate: 30 fps
Viewing Angle: 140° (Diagonal)
Weight: 107.5g

Storage Temperature: -20° to 70°C
Operating Temperature: -10° to 60°C
MicroSD card 32/64/128GB (UHS-I)
DC 12/24V, Built-in Super Capacitor
Built-in GPS Antenna

DC-TW-GPS



GPS Antenna

DC-TW-HW



Hardwire
Cable av

DC-DVRF70-LOCK



Front Facing Dash Camera

1 Camera
140° FOV
Optional External GPS
G-Shock,
Speed if GPS option connected
1080p
64GB Max.

CMOS
Optional tamperproof cable
30 FPS
2.1MP
Built in Microphone
8GB Included
Park mode

DC-TW-HW



Tamperproof
Case for F70

DC-DVRF100



Front Facing Dash Camera

1 Camera
Resolution: 1080p Full HD
2.12MP Sony Exmor CMOS
Frame Rate: up to 30 fps
Viewing Angle: 135° (Diagonal)
Dimensions: 78mm(W)
35mm(D) 35mm(H)
Weight: 44g

Storage Temperature: -20°
to 70°C
Operating Temperature: -10°
to 60°C
MicroSD card 8/16/32/64GB
(UHS-I)
Input Power: DC 12/24V,
Built-in super capacitor



DASH CAMERAS



BLACKVUE-DR900X-2CH-32GB



Forward 4k Camera & Rear Facing Camera

2 Cameras
4K UHD (3840x2160) @ 30FPS (H.265) or
Full HD (1920x1080) @ 60fps
Rear Full HD 1080p @ 30fps
Viewing Angle: 162° (Diagonal)
Built-in dual band Wi-Fi and GPS

1 Channel and 64GB versions are also available.

BLACKVUE-DR750-2CH-TRUCK



Dash Camera with External Rear Camera

2 Cameras
139° FOV / 120° FOV
Internal GPS
G-Shock & Speed
1080p
Wi-Fi download & setting control
128GB Max.
SONY STARVIS

Optional Tamperproof Casing
60 FPS / 30 FPS
2.1MP
Built in Microphone
Park Mode with Power Magic
Single Camera Version available
Cameras Available with 16GB,
32GB, 64GB, & 128GB

BLACKVUE-DR750-TAMP



Tamperproof
Case for DR750

BLACKVUE-BV124X



Blackvue
Ultra Battery
Pack

Up to 28
hours of use.

BLACKVUE-POWERMAGIC-PRO



Blackvue Power Magic Pro

Allows your BlackVue
camera to continue
recording when the
ignition is off.

BLACKVUE-CARD-MSD



Blackvue 128GB MicroSD Card



CATEGORY 4 Cameras



CAMERAS / AHD



AHD-RCAM-1080-P



1080p Heavy Duty Rear Camera 4 Pin aviation connection

TV system: AHD
Output resolution: 1080p
FPS: 25
Viewing angle: 89°(H) 72°(V) 103°(D)
Image device: 1/3" CMOS
Focal length: f: 2.8mm
Operating voltage: 12V DC
Dimensions: 80mm(W) 63mm(D) 70mm(H)
Mirror image

AHD-FCAM-1080P



Front Facing Camera 4 Pin aviation connection

Mini BMW connector to 4 Pin aviation for easier application
TV system: AHD
Output resolution: 1080p
FPS: 25
Viewing angle: 130°(H) 70°(V)
Image device: 1/4" CMOS
Focal length: f: 2.3mm
Operating voltage: 12V DC
Dimensions: 39mm(W) 35mm(D) 30mm(H)

AHD-SCAM-725-1080P



Night Vision Side Camera 4 Pin aviation connection

TV system: AHD
Output resolution: 1080p
FPS: 25
Viewing angle: 140°(H) 80°(V)
Image device: 1/4" CMOS
Focal length: f: 2.8mm
Operating voltage: 12V DC
Dimensions: 60mm(W) 75mm(D) 50mm(H)
Mirror image selectable
Guide lines selectable
Built in Microphone



CAMERAS / AHD

AHD-F307-1080P

AHD 1080P Forward Facing Window Mount Camera



4 Pin aviation connection

TV system: AHD

Output resolution: 1080p

FPS: 25

Viewing angle: 110°

Image Device: 1/3" CMOS

Operating voltage: 12V DC

Dimensions: 58mm(W) 55mm(D) 50mm(H)



CAMERAS / AHD

AHD-BR-RVC07

AHD Wing Mirror Side View Camera



Night vision

4 Pin aviation connection

Can be mounted to the wing mirror

TV system: AHD

Output resolution: 720p

FPS: 25

Viewing angle: 89°(H) 50°(V)

Image device: 1/3" CMOS

Focal length: f: 1.2mm

Operating voltage: 12V DC

Dimensions: 80mm(W) x 49mm(D) x 63mm(H)

AHD-DOME-SM

Night Vision Side Camera



4 Pin aviation connection

TV system: AHD

Output resolution: 720p

FPS: 25

Viewing angle: 100°(H) 70°(V)

Image device: 1/3" CMOS

Focal length: f: 2.8mm

Operating voltage: 12V DC

Dimensions: 50mm(W)

68mm(D) 43mm(H)

Mirror image selectable

Guide lines selectable

Built in Microphone

AHD-CAM-676

AHD Ball Camera



4 Pin aviation connection

TV system AHD

Output resolution: 720p

Mirror Image: Yes, fixed

Audio: Yes

FPS: 25

Viewing angle: 110°

Image Device: 1/3" SONY CMOS

Operating Voltage: 12V DC

Dimensions: 56mm(W) 35mm(D) 65mm(H)



CAMERAS / AHD



AHD-SCAM-720-AUD-2

Night Vision Side Camera



4 Pin aviation connection
TV system: AHD
Output resolution: 720p
FPS: 25
Viewing angle: 100°(H) 70°(V)
Image device: 1/3" CMOS
Focal length: f: 2.8mm

Operating voltage: 12V DC
Dimensions: 50mm(W)
68mm(D) 43mm(H)
Mirror image selectable
Guide lines selectable
Built in Microphone

WHITE VERSION

Night Vision Side Camera



SCAM-SPACER

Camera Spacer

Allows cameras to be mounted further out. Product may need to be adapted. For use with all cameras 25mm deep.



AHD-SCAM-725

Night Vision Side Camera



4 Pin aviation connection
TV system: AHD
Output resolution: 720p
FPS: 25
Viewing angle: 130°(H) 70°(V)
Image device: 1/3" CMOS
Focal length: f: 2.8mm
Operating voltage: 12V DC

Dimensions: 60mm(W)
75mm(D) 50mm(H)
Mirror image selectable
Guide lines selectable
Built in Microphone
AHD-SCAM-725-WHITE
Version in white



CAMERAS / AHD



AHD-CT200-F

Window Mounted Front Facing Camera



Window Mounted Front Facing Camera
FPS: 25
Viewing angle: 110°(H) 60°(V)
Image device: 1/3" CMOS OV60
Focal length: f: 2.3mm
Operating voltage: 12V DC
Dimensions: 60mm(W) 35mm(D)
30mm(H)

4 Pin aviation connection
Mini BMW connector to 4 Pin aviation for easier application
TV system: AHD
Output resolution: 720p

AHD-FCAM-140-CL

Front Facing Camera



4 Pin aviation connection
Mini BMW connector to 4 Pin aviation for easier application
TV system: AHD
Output resolution: 720p
FPS: 25
Viewing angle: 140°(H) 60°(V)

Image device: 1/3" CMOS OV60
Focal length: f: 2.3mm
Operating voltage: 12V DC
Dimensions: 39mm(W) 35mm(D)
30mm(H)
Mirror image selectable via cutting green wire

AHD-DOME-600TVL

AHD Dome Camera with Audio



Dome Camera
Night Vision
4 pin aviation connection
Built in Microphone for Audio
TV system: AHD
Output resolution: 720p
FPS: 25
Viewing angle: 74°(H) 58°(V)

88°(D)
Image device: 1/3" CMOS
Operating voltage: 12V DC
Dimensions: 86mmØ 58mm(H)



CAMERAS / AHD



AHD-DCAM-650



Night Vision Side Camera

AHD Dome Camera with Audio
Night vision
4 Pin aviation connection
Plastic dome cover
Anti-tamper design
Built in Microphone for Audio
TV system: AHD

Output Resolution: 720p
FPS: 25
Viewing angle: 90°(H) 40°(V)
Image device: 1/3" CMOS
Focal length: f: 2.8mm
Operating voltage: 12V DC
Dimensions: 77mmØ 60mm(H)

DCAM-ANGLE

Surface Mount Adaptors for Dome Cameras
0°, 15° & 25° available

AHD-RCAM-210-AUD



Heavy Duty Rear Camera with Smart IR

4 Pin aviation connection
TV system: AHD
Output resolution: 720p
FPS: 25
Viewing angle: 89°(H) 72°(V)
103°(D)

Image device: 1/3" CMOS
Focal length: f: 2.8mm
Operating voltage: 12V DC
Dimensions: 80mm(W)
63mm(D) 70mm(H)
Mirror image
Built in Microphone

AHD-RCAM-220



Wide Angle Heavy Duty Rear Camera

4 Pin aviation connection
TV system: AHD
Output resolution: 720p
FPS: 25
Viewing angle: 100°(H) 60°(V)
80°(D)
Image device: 1/3" CMOS

Focal length: f: 2.8mm
Operating voltage: 12V DC
Dimensions: 75mm(W)
55mm(D) 75mm(H)
Mirror image
AHD-RCAM-220-SS (Silver)
AHD-RCAM-220-B (Black)

AHD-RCAM-220-B

Black Version



CAMERAS / Brake Light



C-KO-SPRINTER-CCD-CAM

Mercedes Sprinter/VW Crafter Brake Light Camera



4 Pin aviation connection
Adjustable Ball Camera
Built in Microphone for Audio
Replaces brake light
Fixed mirror image
TV system: NTSC / PAL
Output resolution: 480i (NTSC) / 576i (PAL)
FPS: 30 (NTSC) / 25 (PAL)
Effective pixels: 752 x 582
Viewing angle: 120°(H) 103°(V) 133°(D)
Image device: 1/3" Sony CCD
Focal length: f: 1.7mm



CAMERAS / Brake Light



CAMERAS / Brake Light



AHD-SPR-CAM-PAL

Mercedes Sprinter/VW Crafter Brake Light Camera 2006+ (Mk2)



Mercedes Vito Brake Light Camera
4 Pin aviation connection
Clips in and replaces OEM brake light
Built brake light LEDs
Fixed mirror image
TV system: NTSC

FPS: 25
Viewing angle: 110°(H)
100°(V)
Image device: 1/3" CMOS
OV60

Operating voltage: 9-16V
DC
Dimensions: 350mm(W)
100mm(D) 50mm(H)

C-KO-VITO-CAM

Mercedes Vito Brake Light Camera



4 Pin aviation connection
Clips in and replaces OEM brake light
Built brake light LEDs
Fixed mirror image
TV system: NTSC
Output resolution: 480i

FPS: 30
Effective pixels: 510 x 492
Viewing angle: 110°(H) 80°(V)
Image device: 1/3" CMOS

Focal length: f: 2.8mm
Operating voltage: 12V DC
Dimensions: 491mm(W)
100mm(D) 55mm(H)

AHD-FT-CAM

Ford Transit Brake Light Camera 2014+



4 Pin aviation connection
TV system: AHD
Output resolution: 720p
Mirror image: Yes – fixed
Night vision IR: Yes – 6 LEDs
FPS: 25
Viewing angle: 100°
Image Device: 1/3 NVP SONY CCD
Operating voltage: 12V DC
Dimensions: 385mm(W) 130mm(D) 55mm(H)

C-KO-SPR-CAM

Mercedes Sprinter/VW Crafter Brake Light Camera



4 Pin aviation connection
Adjustable Ball Camera
Selectable guide lines via jumper plug
Built in microphone for audio
Replaces brake light
Fixed mirror image

TV system: NTSC / PAL
Output resolution: 480i
(NTSC) / 576i (PAL)
FPS: 30 (NTSC) / 25 (PAL)
Effective pixels: 762 x 504
Viewing angle: 130°(H)

110°(V)
Image device: CMD-III
Operating voltage: 9-16V
DC
Dimensions: 350mm(W)
90mm(D) 50mm(H)

C-KO-SPR-CAM (NTSC Version)
C-KO-SPR-CAM-PAL (PAL Version)
C-KO-SPR-CAM-NM (Non Mirror Version – available)

AHD-TC-CAM-LED

Ford Transit Custom Brake Light Camera 2016+ (LED Version)



4 Pin aviation connection
TV system: PAL
Output resolution: 576i
Mirror image: Yes – fixed
FPS: 25
Viewing angle: 110°
Image Device: CMD-III
Operating voltage: 12V DC
Dimensions: 338mm(W) 37mm(D) 25mm(H)



CAMERAS / Brake Light



CAMERAS / Brake Light



C-KO-NI-CAM

Iveco Daily Brake
Light Camera



4 Pin aviation connection
TV system: NTSC
Output resolution: 480i
Mirror image: Yes
Night vision IR: Yes – 6 LEDs
Audio: Yes

AHD-VR-CAM

Vauxhall Vivaro, Renault
Traffic Brake Light Camera
2014+



4 Pin aviation connection
TV system: AHD
Output resolution: 720p
Mirror image: Yes – fixed
Night vision IR: Yes – 9 LEDs

C-KO-TRANSIT-CAM

Ford Transit Brake
Light Camera



4 Pin aviation connection
Adjustable ball camera
Replaces factory brake light
Fixed mirror image
TV system: PAL
Output resolution: 576i

C-KO-TCON-CAM

Ford Transit Connect
2014-2017 Brake



Light Camera
4 Pin aviation connection
Adjustable ball camera
Replaces factory brake light
Fixed mirror image
TV system: PAL

FPS: 30
Viewing angle: 130°(H) 110°(V)
Image Device: CMD-III

Operating voltage: 12V DC
Dimensions: 570mm(W)
120mm(D) 60mm(H)

FPS: 25
Viewing angle: 95°
Image Device: 1/3 NVP SONY

CCD
Operating voltage: 12V DC
Dimensions: 232mm(W)
160mm(D) 80mm(H)

FPS: 25
Effective pixels: 976 x 596
Viewing angle: 120°(H)
100°(V)
Image device: 1/3" NVP
Sony CCD

Focal length: f: 2.6mm
Operating voltage: 9-16V
DC
Dimensions: 385mm(W)
130mm(D) 55mm(H)

Output resolution: 576i
FPS: 25
Effective pixels: 720 x
540 Viewing angle: 120°(H)
90°(V)
Image device: 1/3" CMOS

Focal length: f: 2.8mm
Operating voltage: 12V DC
Dimensions: 400mm(W)
120mm(D) 55mm(H)

C-KO-VR-CAM

Vauxhall Vivaro,
Renault Traffic Brake
Light Camera 2014+



4 pin aviation connection
TV system: PAL
Output resolution: 576i
Mirror image: Yes – fixed

C-KO-T6-CAM

VW T6 Tailgate Brake
Light Camera



4 Pin aviation connection
TV system: PAL
Output resolution: 576i
Mirror image: Yes – fixed

C-KO-TC-CAM-LED

Ford Transit Custom
Brake Light Camera



Ford Transit Custom Brake
Light Camera
LED Version

BULB VERSION



Bulb Version

FPS: 25
Viewing angle: 99°(D)
Image device: 1/4" CMOS
Operating temperature:
-30 ~+70 RH95%

Dimensions:
232mm(W) 160mm(D)
80mm(H)

FPS: 25
Viewing angle: 110°
Image Device: CMD-III

Operating voltage: 12V DC
Dimensions: 338mm(W)
37mm(D) 25mm(H)

Adjustable camera ball
Night vision
4 Pin aviation connection
Clips in and replaces OEM
brake light

Fixed mirror image
TV system: PAL / NTSC
Output resolution: 576i
(PAL) / 480i (NTSC)
FPS: 25 (PAL) / 30 (NTSC)

Effective pixels: 500 x 582
Viewing angle: 82°(H) 79°(V)
99°(D)
Image device: 1/4" CMOS

Focal length: f: 2mm
Operating voltage: 12V DC
Dimensions: 264mm(W)
120mm(D) 68mm(H)

C-KO-TC-CAM (Bulb Version)
C-KO-TC-CAM-LED (LED Version)
C-KO-TC-CAM-NTSC-L (LED NTSC Version)



CAMERAS / Brake Light



CAMERAS / Brake Light



C-KO-CRAFTER-CAM

VW Crafter, Man TGE
Brake Light Camera



4 Pin aviation connection
Adjustable Ball Camera
Replaces factory brake light
Fixed mirror image
TV system: NTSC
Output resolution: 480i

FPS: 30
Effective pixels: 752 x 582
Viewing angle: 120°(H)
103°(V) 133°(D)
Image device: 1/3" Sony
CCD

Focal length: f: 1.7mm
Operating voltage: 12V DC
Dimensions: 64.2mm(W)
208.9mm(D) 68.7mm(H)

C-KO-VWT-CAM

VW T5/T6 with
Double Door Brake
Light Camera



4 Pin mini BMW to 4 Pin aviation
connection
Clips in and replaces OEM brake light
Fixed mirror image
TV system: PAL
Output resolution: 576i

FPS: 25
Effective pixels: 500 x 582
Viewing angle: 110°(H) 80°(V)
Image device: 1/3" CMOS
Focal length: f: 2.8mm

Operating voltage: 12V DC
Dimensions: 188mm(W)
60mm(D) 60mm(H)

C-KO-FPC-CAM

Fiat Ducato, Peugeot Boxer, Citroen Relay Brake Light Camera



4 Pin aviation connection
Adjustable ball camera with night vision
Selectable guide lines via jumper plug
Built in microphone for audio
Built in red LED brake light
Fixed mirror image
TV system: NTSC / PAL

Output resolution: 480i (NTSC)
568i (PAL)
FPS: 30 (NTSC) / 25 (PAL)
Effective pixels: 762 x 504
Viewing angle: 130°(H) 110°(V)

Image device: CMD-III
Operating voltage: 9-16V DC
Dimensions: 270mm(W)
80mm(D) 57mm(H)

C-KO-FPC-CAM (NTSC Version)
C-KO-FPC-CAM-PAL (PAL Version)

C-KO-VWC-CAM

VW Caddy Brake
Light Camera



Clips in and replaces OEM brake light
Fixed mirror image
TV system: PAL
Output resolution: 576i

FPS: 25
Effective pixels: 720 x 540
Viewing angle: 110°(H) 90°(V)
Image device: 1/3" CMOS
Focal length: f: 2.8mm

Operating voltage: 12V DC
Dimensions: 175mm(W)
39mm(D) 65mm(H)

C-KO-EXP-CAM

Peugeot Expert,
Citroen Dispatch &
Toyota ProAce 2016+



4 Pin aviation connection
TV system: NTSC
FPS: 30
Output resolution: 480i

Effective pixels: 510 x 492
Viewing angle: 110°(H) 80°(V)
Image device: 1/3"
CMOS7959 Focal length: f:
2.8mm

Operating voltage: 12V DC
Dimensions: 260mm(W)
40mm(D) 33mm(H)

C-KO-NRV-CAM

Renault Master, Nissan NV400, Vauxhall Movano Brake
Light Camera



4 Pin aviation connection
Night vision
Fixed mirror image
TV system: PAL / NTSC
Output resolution: 576i (PAL) / 480i (NTSC)
FPS: 25 (PAL) / 30 (NTSC)

Effective pixels: 648 x 488
Viewing angle: 89°(H) 72°(V)
103°(D)
Image device: 1/3" CMOS7959
Focal length: f: 2.8mm

Operating voltage: 9-16V DC
Dimensions: 197mm(W)
109mm(D) 126mm(H)

C-KO-NRV-CAM (PAL Version)
C-KO-NRV-CAM-NTSC (NTSC Version)



CAMERAS / Brake Light



C-KO-VR-CAM

Vauxhall Vivaro, Renault Trafic Brake Light Camera



Adjustable camera ball
Night vision
4 Pin aviation connection
Clips in and replaces OEM brake light
Built in brake light LEDs
Fixed mirror image
TV system: PAL / NTSC

Output resolution: 576i (PAL) / 480i (NTSC)
FPS: 25 (PAL) / 30 (NTSC)
Effective pixels: 500 x 582
Viewing angle: 82°(H) 79°(V)

Image device: 1/4" CMOS
Focal length: f: 2mm
Operating voltage: 12V DC
Dimensions: 232mm(W) 160mm(D) 80mm(H)

C-KO-VR-CAM (PAL Version)
C-KO-VR-CAM-NTSC (NTSC Version)

C-KO-VV-CAM

Vauxhall Vivaro, Renault Trafic Brake Light Camera 2014+



Night vision
4 Pin aviation connection
Clips in and replaces OEM brake light
Built in brake light LEDs
Fixed mirror image
TV system: NTSC

Output resolution: 480i
FPS: 30
Effective pixels: 500 x 582
Viewing angle: 120°(H) 90°(V) 110°(D)

Image device: 1/4" CMOS
Focal length: f: 2mm
Operating voltage: 12V DC
Dimensions: 140mm(W) 85mm(D) 55mm(H)



CAMERAS / Brake Light



C-KO-UNI-CAM

Universal Brake Light Camera



Available on special order only.

4 Pin aviation connection
Universal brake light built in LED red light
Adjustable Ball Camera
Fixed mirror image
TV system: PAL
Output resolution: 576i
FPS: 25
Effective pixels: 500 x 582
Viewing angle: 82°(H) 79°(V) 99°(D)
Image device: 1/3" CMOS
Focal length: f: 2mm
Operating voltage: 12V DC
Dimensions: 125mm(W) 110mm(D) 95mm(H)

CA-MB-SPR-CCD

Overhanging Camera with Night Vision



CA-MB-SPR-CCD-N (NTSC Version)
CA-MB-SPR-CCD-P (PAL Version)

4 Pin aviation connection
Roof Mounted Camera
Fixed mirror image
TV system: NTSC / PAL
Output resolution: 480i / 576i
FPS: 30 (NTSC) / 25 (PAL)
Effective pixels: 720 x 480
Viewing angle: 85°(H) 60°(V)
Image device: 1/3" Sony CCD
Focal length: f: 2.1mm
Operating voltage: 12V DC
Dimensions: 132mm(W) 220mm(D) 100mm(H))



CAMERAS / Number Plate



CA-9935

Number Plate Light Camera for Viano & Vito



RCA video connection
Guide lines selectable via joining green wires
Original bulb fits into housing, power lead with relay
TV system: NTSC FPS: 30
Output resolution: 480i
Effective pixels: 668 x 576
Viewing angle: 120°(H) 110°(V)
Image device: 1/3" CMOS OV60 Focal length: f: 2.1mm
Operating voltage: 12V DC
Dimensions: 76mm(W) 26mm(D) 35mm(H)

CA-9922

Number Plate Light Camera for Transit



RCA video connection
Guide lines selectable by joining green wires
Built in LED light
TV system: PAL FPS: 25
Output resolution: 576i
Effective pixels: 668 x 576
Viewing angle: 120°(H) 110°(V)
Image device: 1/3" CMOS OV60 Focal length: f: 2.1mm
Operating voltage: 12V DC
Dimensions: 60mm(W) 31mm(D) 30mm(H)

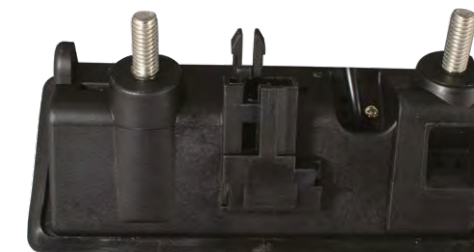


CAMERAS / Number Plate



CA-9801

Most Audi & VW



CA-9801DY

Audi A4 2017



CA-9801-EY

Audi A5 2017, Q2 & Skoda Kodiaq



Handle Bar Camera
Various Vehicle Applications
RCA video connection
Guide lines selectable via joining green wires
Built in switch for tailgate
Fixed mirror image
TV system: NTSC
Output resolution: 480i
FPS: 30

Effective pixels: 668 x 576
Viewing angle: 120°(H) 110°(V)
Image device: 1/3" CMOS OV60
Focal length: f: 2.1mm
Operating voltage: 12V DC

CA-9801 110mm(W) 48mm(D) 23mm(H)
CA-9801DY 110mm(W) 48mm(D) 30mm(H)
CA-9801-EY 110mm(W) 44mm(D) 28mm(H)



CAMERAS / D1



RCAM-0-087-CAM

Heavy Duty Body Mount Camera



Heavy Duty Body Mount Camera
Night vision Smart IR
4 Pin aviation connection
Built in Microphone for Audio
Mirror image selectable via screw on camera rear
TV system: PAL
Output resolution: 576i
FPS: 25

Effective pixels: 960 x 576
Viewing angle: 80°(H) 60°(V)
Image device:
1/3" CMOS PC1058K
Operating voltage: 12V DC
Dimensions: 90mm(W)
62mm(D) 68mm(H)



RCAM-0-087-CAM-W

White Version

CA-309-PAL

Wide Angle Camera



4 Pin aviation connection
TV system: PAL
Output resolution: 576i
Guidelines: Yes - Selectable
Mirror image: Yes - Selectable
FPS: 25
Viewing angle: 170°
Image Device: 1/3" CMOS OV60
Operating voltage: 12V DC
Dimensions: 28mm(W) 40mm(D) 23mm(H)



CAMERAS / D1



COL-M90

Metal Wedge Camera



Can be mounted horizontal or vertical
RCA video connection
Mini BMW connector to RCA video
Guide lines selected via green cutting lead
Fixed mirror image
TV system: NTSC (COL-M90-N-B) / PAL (COL-M90-P-B)

Output resolution: 480i (NTSC) 576i (PAL)
FPS: 30 (NTSC) 25 (PAL)
Effective pixels: 720 x 540
Viewing angle: 110°(H) 100°(V)
Image device: 1/2" CMOS II
Focal length: f: 1.2mm
Operating voltage: 12V DC
Dimensions: 32mm(W) 34mm(D) 24mm(H)

COL-M90-N-B (NTSC Version)

COL-M90-P-B (PAL Version)

C-KO-BR-RVC07

Wing Mirror Side View Camera



Night vision
4 Pin aviation connection
Can be mounted to the wing mirror
TV system: PAL
Output resolution: 576i
FPS: 25

Effective pixels: 500 x 582
Viewing angle: 89°(H) 70°(V)
Image device: 1/3" CMOS
Focal length: f: 2.8mm
Operating voltage: 12V DC
Dimensions: 80mm(W) 49mm(D) 63mm(H)

CAM-DOME-600TVL

Dome Camera with Audio



Dome Camera with Audio
Night vision
4 Pin aviation connection
Built in Microphone for Audio
Anti-tamper design
TV system: PAL
Output resolution: 576i

FPS: 25
Effective pixels: 704 X 576
Viewing angle: 60°(H) 30°(V)
Image device: 1/3" CMOS
Operating voltage: 12V DC
Dimensions: 86mmØ 58mm(H)



CAMERAS / D1



CAM-DOME-650-SN

Wing Mirror Side View Camera



Dome Camera
4 Pin aviation connection
Plastic Dome Cover
Anti-tamper design
Separate 25Ø base
Mirror image selectable
by cutting white wire
TV system: PAL

Output resolution: 576i
FPS: 25
Effective pixels: 752 x 582
Viewing angle: 110°(H) 75°(V)
Image device: 1/3" Sony CCD
Focal length: f: 2.1mm
Operating voltage: 12V DC
Dimensions: 66mmØ 49m(H)

DCAM-ANGLE

Surface Mount Adaptors
for Dome Cameras
0°, 15° & 25° available

C-KO-CAM-410

Side View Camera with Audio



Side View Camera with Audio
Night vision
4 Pin aviation connection
Built in Microphone for Audio
Mirror image selectable via
jumper plug
TV system: PAL
Output resolution: 576i
FPS: 25

Effective pixels: 728 x 488
Viewing angle: 105°(H) 72°(V)
Image device: 1/3" CMOS
PC1089
Operating voltage: 12V DC
Dimensions: 57mm(W)
75mm(D) 43mm(H)
Available Black or White

C-KO-RCAM-220-B

White Version



SCAM-SPACER

Camera Spacer

Allows cameras to be mounted further out. Product
may need to be adapted. For use with all cameras
25mm deep.



CAMERAS / D1



CA-9406-PAL

Night Vision Bumper Camera



4 Pin aviation connection
Mini BMW connector to
4 Pin aviation
Mirror image selectable
TV system: PAL
Output resolution: 576i
FPS: 25

Effective pixels: 976 x 582
Viewing angle: 120°(H) 100°(V)
Image device: 1/3" CMOS
Focal length: f: 2.3mm
Operating voltage: 12V DC
Dimensions: 31mm(W) 40mm(D)
31mm(H)

CA-9770-PAL

Dual Camera



RCA connection
Mirror image
Built in microphone
TV system: PAL
Output resolution: 576i
FPS: 25
Effective pixels: 960 x 576
Viewing angle: 75°(H)

Image device: 1/3"
CMOS PC1058K
Operating voltage: 12V DC
Dimensions: 110mm(W)
70mm(D) 80mm(H)
AHD Version available

CAB-DUAL-4PIN

Cable Available



CA-9320-800

800TVL Front Camera



4 Pin aviation connection
Mirror image selectable
via cutting green wire
Mini BMW connector
to 4 Pin aviation
TV system: PAL
Output resolution: 576i
FPS: 25

Effective pixels: 976 x 582
Viewing angle: 110°(H) 80°(V)
Image device: 1/3" SONY CCD
Focal length: f: 2.3mm
Operating voltage: 12V DC
Dimensions:
39mm(W) 35mm(D) 30mm(H)



CAMERAS / D1



CA-9401-Y

Wedge Camera



RCA video connection
Guide lines selectable
via joining green wires
Fixed mirror image
TV system: NTSC
Output resolution: 480i
FPS: 30
Effective pixels: 668 x 576

Viewing angle: 120°(H) 110°(V)
Image device: 1/3" CMOS OV60
Focal length: f: 2.1mm
Operating voltage: 12V DC
Dimensions:
30mm(W) 34mm(D) 37mm(H)

CW141642MCAI

Number Plate Camera with Surround



4 Pin aviation connection
Mirror image
Guide lines selectable
TV system: PAL or NTSC
Output resolution:
576i/ 480i (NTSC)
FPS: 25 / 30 (NTSC)
Effective pixels: 648 x 488

Viewing angle: 120°(H)
Image device: 1/3" CMOS
Focal length: f: 2.1mm
Operating voltage: 12V DC
Dimensions:
527mm(W) 37mm(D) 125mm(H)

COL185-SCR-MK2

Multi Mount Micro Camera



Butterfly / Push Fit mount camera
Adaptor to side mount camera
4 Pin aviation connection
Mirror image selectable
by cutting white wire
Guide lines selectable
by cutting green wire
TV system: PAL
Output resolution: 576i
FPS: 25

Effective pixels: 720 x 540
Viewing angle: 110°(H) 90°(V)
Image device: 1/3" CMOS
Focal length: f: 2.1mm
Operating voltage: 12V DC
Dimensions:
37mm(W) 30mm(D) 27mm(H)

BUTTERFLY MOUNT



CATEGORY 5 Monitors



MONITORS

AHD-MON-C13

7" AHD Dash Mount Monitor



7" Digital panel
AHD / PAL / NTSC
compatible
3 x 4 Pin aviation
inputs
3 Trigger

Resolution: 1024 x 600
Contrast ratio: 500:1
Aspect ratio: 16:9
Brightness: 400cd/m²
Viewing angle:
U: 50° D:70° R/L 70°/70°

Operating voltage:
12V / 24V DC
Dimensions:
180mm(W) 23mm(D)
120mm(H)
Monitor can power
cameras

PV-YW795

7" Dash Mount Monitor



7" Digital panel
PAL / NTSC compatible
2 x 4 Pin aviation inputs
2 Triggers
Resolution: 800 x 480
Contrast ratio: 500:1

Aspect ratio: 16:9
Brightness: 400cd/m²
Viewing angle: U: 50° D:70° R/L
70°/70°
Operating voltage: 12V / 24V
DC

Dimensions: 180mm(W) 23mm(D)
120mm(H)
Monitor can power cameras
Audio on CH2

AHD-MON-C90

9" AHD Dash Mount Monitor



9" Digital panel
AHD / PAL / NTSC
compatible

2 x 4 Pin aviation inputs
1 Trigger
Resolution: 1024 x 600
Contrast ratio: 500:1
Aspect ratio: 16:9
Brightness: 400cd/m²
Viewing angle:
U: 50° D:70° R/L 70°/70°

Operating voltage:
12V DC
Dimensions:
192mm(W) 32mm(D)
134mm(H)
Monitor can power
cameras

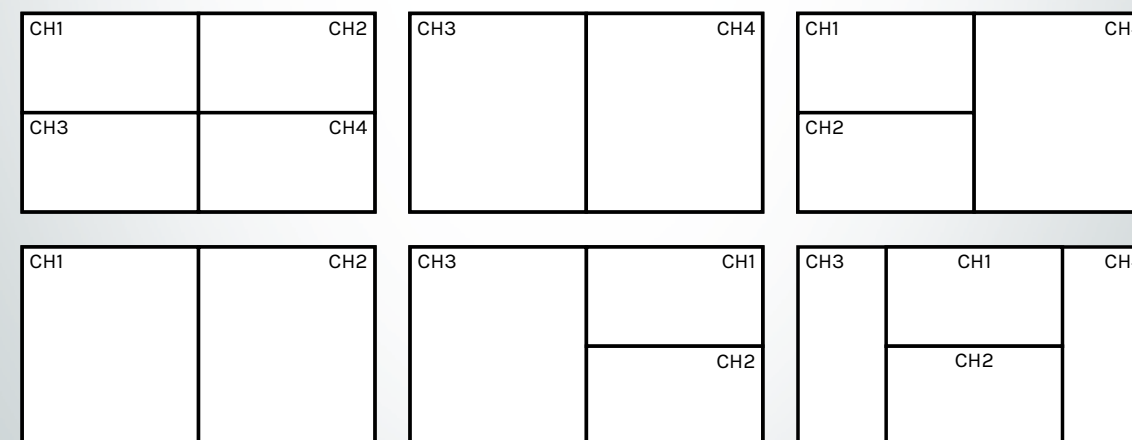
MONITORS

QSM Monitors 7" Quad Dash Mount Monitor



7" Digital panel
4 x 4 Pin aviation inputs
4 Triggers
Resolution: 1024 x 600
Contrast ratio: 500:1
Aspect ratio: 16:9
Brightness: 400cd/m²
Viewing angle: U: 50° D:70° R/L
70°/70°
Operating voltage: 12V / 24V DC

Dimensions: 192mm(W) 32mm(D) 134mm(H)
Monitor can power cameras
Shows up to 4 images on the screen at the
same time
Each camera displayed on screen when
triggered
QSM-MON-C10 PAL / NTSC compatible for D1
Cameras
QSM-AHD-C10 for AHD Cameras





MONITORS



PV-YW-568

5.6" Dash Mount Monitor



5.6" Digital panel
PAL / NTSC compatible
2 x 4 Pin aviation inputs
1 Trigger
Resolution: 320 x 234
Contrast ratio: 500:1

Aspect ratio: 4:3
Brightness: 400cd/m²
Viewing angle: U: 50° D:70° R/L
70°/70°
Operating voltage: 12V / 24V DC

Dimensions: 146mm(W) 28mm(D) 110mm(H)
Monitor can power cameras
Audio on CH2

PV-YW501

5" Monitor



5" Digital panel
PAL / NTSC compatible
2 x RCA inputs
Trigger by video signal
Resolution: 1200 x 680
Contrast ratio: 350:1

Aspect ratio: 16:9
Brightness: 400cd/m²
Viewing angle: U: 50° D:70° R/L
70°/70°

Operating voltage: 12V DC
Dimensions: 125mm(W) 40mm(D) 95mm(H)



MONITORS / Kits



CK-18 CK-18 Kit Camera



4 Pin aviation connection
TV system: PAL
Output resolution: 576i
Mirror image: Yes
Night vision IR: Yes – 18 LEDs
FPS: 25
Viewing angle: 80°(H) 60°(V)
Image Device: 1/3" Sharp CMOS
Operating voltage: 12V DC
Dimensions: 80mm(W) 63mm(D) 70mm(H)



MONITORS / Kits



AHD-CKIT-1080P

7" 1080p AHD Camera Kit



Heavy Duty Rear Camera
Night Vision with Smart IR
4 Pin aviation connection
Camera Dimensions: 80mm(W)
63mm(D) 70mm(H)
20m Camera lead
7" AHD Digital TFT LCD

Powers cameras 12V DC
Can mirror cameras on screen
2 Inputs
1 Trigger
Operating voltage: 12V / 24V DC
Monitor Dimensions:
192mm(W) 32mm(D) 134mm(H)

AHD-CK-01

7" AHD Rear Camera Kit



Heavy Duty Rear Camera
Night Vision with Smart IR
4 Pin aviation connection
Camera Dimensions: 80mm(W)
63mm(D) 70mm(H)
20m Camera lead
7" AHD Digital TFT LCD

Powers cameras 12V DC
Can mirror cameras on screen
2 Inputs
1 Trigger
Operating voltage: 12V / 24V DC
Monitor Dimensions:
180mm(W) 23mm(D) 120mm(H)

AHD-CK-02

7" AHD Rear & Side Camera Kit



Heavy Duty Rear Camera
Night Vision with Smart IR
4 Pin aviation connection
Rear Camera Dimensions:
80mm(W) 63mm(D) 70mm(H)
20m Camera lead
AHD Side View Camera
Night Vision
4 Pin aviation connection
Mirror image & guide line
selectable

Side Camera Dimensions: 50mm(W)
68mm(D) 43mm(H)
5m Camera lead
7" AHD Digital TFT LCD
Powers cameras 12V DC
Can mirror cameras on screen
2 Inputs – both used in kit - 1 Trigger
Operating voltage: 12V / 24V DC
Monitor Dimensions:
180mm(W) 23mm(D) 120mm(H)



MONITORS / Kits



CK-03-B

7" Camera Kit



Heavy Duty Body Mount Camera
Night Vision with Smart IR
4 Pin aviation connection
Built in Microphone for Audio
Mirror image selectable via screw on camera rear
Camera Dimensions:
80mm(W) 63mm(D) 70mm(H)
7" Digital TFT LCD
Delay timer for trigger set on screen
Powers cameras 12V DC
Can mirror cameras on screen
Built in sun shade
Built in speaker
2 x 4 Pin aviation inputs
1 Trigger
Operating voltage: 12V / 24V DC
Monitor Dimensions: 172mm(W) 45mm(D) 115mm(H)

WTX-439 / WRX-098

Wireless Transmitter and Receiver



4 Pin aviation connection
TV system: PAL
Output resolution: 576i
Line of sight range: 120m
Output power: 20dBm
RF bit rate: 4Mbps
Spread spectrum: 2400 - 2483.5 MHz
Latency: 120ms
Transmission frequency: 2.4GHz
Operating voltage: 12V / 24V DC
Monitor dimensions: 105mm(W) 110mm(D) 25mm(H)



MONITORS / Mirror Monitors

AHD-7MM

7" Mirror Monitor Clip On



TV system: PAL / NTSC / AHD
Screen size: 7"
Resolution: 1024 X 600
Contrast ratio: 500:1
Aspect ratio: 16:9
Brightness: 400cd/m²
Viewing angle: U: 50° D:70° R/L 70°/70°
4 pin aviation inputs: 2
Trigger inputs: 1
Operating voltage: 12V DC
Dimensions: 250mm (W) 21mm (D) 109mm (H)



Rear of Product



MONITORS / Mirror Monitors

AHD-75M-STALK

7" Mirror Monitor Stalk



TV system: PAL / NTSC / AHD
Screen size: 7"
Resolution: 1024 X 600
Contrast ratio: 500:1
Aspect ratio: 16:9
Brightness: 400cd/m²
Viewing angle: U: 50° D:70° R/L 70°/70°
4 pin aviation inputs: 2
Trigger inputs: 1
Operating voltage: 12V DC
Dimensions: 250mm (W) 21mm (D) 109mm (H)



Rear of Product



Universal Stalk Included



MONITORS / Mirror Monitors



C-KO-MIR-5C

5" Mirror Monitor Clip On



Rear of Product

5" Digital panel
PAL / NTSC compatible
2 x RCA video inputs
Switches with video signal
Resolution: 480 x 272
Contrast ratio: 300:1

Aspect ratio: 16:9
Brightness: 500cd/m²
Viewing angle: U: 50° D:70° R/L
70°/70°
Operating voltage: 12V DC
Dimensions: 276mm(W)
25mm(D) 97mm(H)

TC-06

4.3" Mirror Monitor Clip On



Rear of Product

4.3" Digital panel
PAL / NTSC compatible
2 x RCA video inputs
1 Trigger
Resolution: 480 x 272
Contrast ratio: 300:1

Aspect ratio: 16:9
Brightness: 250cd/m²
Viewing angle: U: 50° D:70° R/L
70°/70°
Operating voltage: 12V DC
Dimensions: 276mm(W)
30mm(D) 39mm(H)

C-KO-7MM

7" Mirror Monitor Clip On



Rear of Product

7" Digital panel
PAL / NTSC compatible
2 x RCA video inputs
1 Trigger
Resolution: 800 x 480
Contrast ratio: 300:1

Aspect ratio: 16:9
Brightness: 250cd/m²
Viewing angle: U: 50° D:70° R/L
70°/70°
Operating voltage: 12V DC
Dimensions: 250mm(W)
21mm(D) 109mm(H)



MONITORS / Mirror Monitors



C-KO-MIR-5S

5" Mirror Monitor with Universal Stalk



Universal Stalk Included Rear of Product

5" Digital panel
PAL / NTSC compatible
2 x RCA video inputs
Switches with video signal
Resolution: 480 x 272
Contrast ratio: 300:1

Aspect ratio: 16:9
Brightness: 500cd/m²
Viewing angle: U: 50° D:70° R/L
70°/70°
Operating voltage: 12V DC
Dimensions:
276mm(W) 25mm(D) 97mm(H)

TC-05

4.3" Mirror Monitor with Universal Stalk



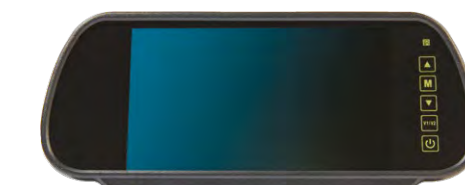
Universal Stalk Included Rear of Product

4.3" Digital panel
PAL / NTSC compatible
2 x RCA video inputs
1 Trigger
Resolution: 480 x 272
Contrast ratio: 300:1

Aspect ratio: 16:9
Brightness: 250cd/m²
Viewing angle: U: 50° D:70° R/L
70°/70°
Operating voltage: 12V DC
Dimensions:
276mm(W) 30mm(D) 39mm(H)

C-KO-75M-STALK

Mirror Monitor with Universal Stalk



Universal Stalk Included Rear of Product

7" Digital panel
PAL / NTSC compatible
2 x RCA video inputs
1 Trigger
Resolution: 800 x 480
Contrast ratio: 300:1

Aspect ratio: 16:9
Brightness: 250cd/m²
Viewing angle: U: 50° D:70° R/L 70°/70°
Operating voltage: 12V DC
Dimensions:
250mm(W) 21mm(D) 109mm(H)



MONITORS / Mirror Monitors



MONITORS / Mirror Monitors



STALK#1



For use with
TC-05,
C-KO-MIR-5S,
C-KO-75M-STALK



STALK#3



For use with
TC-05,
C-KO-MIR-5S,
C-KO-75M-STALK



STALK#2



For use with
TC-05,
C-KO-MIR-5S,
C-KO-75M-STALK



STALK#12



For use with
TC-05,
C-KO-MIR-5S,
C-KO-75M-STALK



STALK#7



For use with
TC-05,
C-KO-MIR-5S,
C-KO-75M-STALK



STALK#42



For use with
TC-05,
C-KO-MIR-5S,
C-KO-75M-STALK



STALK#35



For use with
TC-05,
C-KO-MIR-5S,
C-KO-75M-STALK



LOCAA319-0.5



Rear View Mirror Bonder
0.5ml
Suitable for glass and metal only



MONITORS / Mirror Monitors



TD-03

4.3" Mirror Monitor with Stalk



Universal mount
Built in Ambient Light Sensor
4.3" Digital panel
PAL / NTSC compatible
2 x RCA video inputs
1 Trigger
Resolution: 480 x 272
Contrast ratio: 300:1
Aspect ratio: 16:9
Brightness: 250cd/m²
Viewing angle: U: 50° D:70° R/L 70°/70°
Operating voltage: 12V DC
Dimensions: 270mm(W) 44mm(D) 80mm(H)



WMIR-M12

12.3" Electronic Wing Mirror



TV system: PAL / NTSC / AHD
Screen size: 12.3"
Resolution: 1920 X 720
Contrast ratio: 500:1
Aspect ratio: 8:3
Brightness: 750cd/m²
Viewing angle: U: 85° D:85° R/L 85°/85°
4 pin aviation inputs: 2
Trigger inputs: 1
Operating voltage: 12V / 24V DC
Dimensions: 160mm (W) 31.5mm (D) 343mm (H)



CATEGORY 6 Sensors



SENSORS / Proximity Sensor

C-KO-ULTRASCAN-04B



4 Sensor Side Proximity Sensor System with GPS Speed Detection

Audible and visual traffic light display warning
 Detection range: 0 – 200cm (selectable via dip switches)
 GPS Built in off above 20Kph
 Brake input
 Sleep secure function
 Operating voltage: 9V - 32V DC



C-KO-ULTRASCAN-EXT

Sensor Cable Extenders for C-KO-ULTRASCAN Systems

Available in 1M, 2M & 4M



ULTRASCAN-MOUNT

Metal Underhanging Mount for Sensors

C-KO-ULTRASCAN-06



6 Sensor Side Proximity Sensor System with GPS Speed Detection

Audible and visual traffic light display warning
 Detection range: 0 – 200cm
 GPS Built in off above 20Kph
 Brake input
 Sleep secure function
 Operating voltage: 9V - 32V DC

C-KO-ULTRASCAN-EXT

Sensor Cable Extenders for C-KO-ULTRASCAN Systems

Available in 1M, 2M & 4M

SENSORS / Parking Sensor

RS-2-22-RM-A



2 Head Rubberised Parking Sensors for Metal Bumpers

Push fit rubber heads
 Number of heads: 2
 Sensor hole size: 22Ømm
 Length of cable 3m at the furthest sensor
 Detection range: 1.5m to 0.3m
 Sensitivity adjustment
 Operating voltage: 12V DC
 20° Angled heads

RS-4000-F



GPS Speed Controlled Front Parking Sensor

Quick Installation - simple live & earth
 5 second off delay for traffic
 Push fit gloss 22mm black heads
 Sensors on between 1mph - 6mph
 Length of cable 3m at the furthest sensor
 Detection range: 1.2m to 0.3m
 Operating voltage: 12V DC
 Variable volume
 Buzzer included
 Optional display available
 Rear version available without GPS (RS-4000)



Sensor Extension Cables



SENSORS / Accessories



RS-DISPLAY

Visual Distance Display



Compatible with:
RS-4-18-R-I
RS-2-22-RM-A
RS-4-22-RM-A
RS-22/26-RMB

(See price list for specific compatible parts)

RS-PS-EXT

Sensor Extension Cable



3 Metres in length

(See price list for specific compatible parts)



CATEGORY 7 Warning Alarms & Lighting



WARNING / Audible Alarms

AVSM14CLH

Left Turn Alarm



Single unit ideal for small vehicles where 1 alarm will suffice. UK Spec – LEFT TURN
Automatically mutes when hazards are in operation to avoid confusion.
Talking audio alert
'STAND CLEAR, THIS VEHICLE IS TURNING LEFT'
Rated voltage: 12/24 dc
Rated current 0.4a
Db rating 85 db @ 1 metre
Frequency rating 2500 +/- 10%
Modulation 80 per minute
Overvoltage & surge protected
Reverse polarity protected
Fully encapsulated waterproof to IP65 minimum
Dimensions 122 x 81 x 55mm

Right turn alarm alternative also available.

AVAL2-14CLHO

ALARM-A-LIGHT



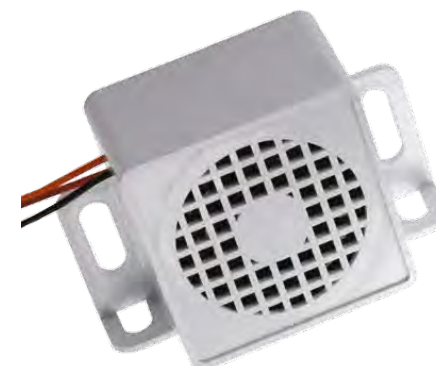
Talking audio alert
'STAND CLEAR, THIS VEHICLE IS TURNING LEFT'
Orange LED talking Alarm-a-light.
The ultimate alarm and light warning system.
When the alarm is activated the lights flash in unison with the sound, when mute or half volume are selected the lights flash brighter to highlight the danger.
Dual voltage
CE and EMC approved
M.I.R.A. Tested for all on and off highway applications
Epoxy sealed for greater durability against water
Complete with anti-vibration gasket and mounting screws
E marked e11*72/245*2009/19*7568*00
10R approved 10R-037568

Rear and right turn alarm alternatives available.

WARNING / Audible Alarms

AVRWN02

Non-Bleeping Multi-Frequency Sound



Operating voltage: 12V / 24V DC
Working voltage range: 9v thru 28v
Rated current 0.50mA
Db rating 88dB
Overvoltage & surge protected
Reverse polarity protected
Fully encapsulated waterproof
to IP65 minimum
Dimensions:
100mm (L) x 65mm (H) x 46mm (D)
AVRWN02 - Night silent through orange wire
AVRWN02R2 - Night silent through double engage

AVR15C

Reverse Vocal Alarm



"This vehicle is reversing ..."
Operating voltage: 12V / 24V DC
Working voltage range: 9v thru 28v
Rated current 0.4a and below at rated voltage
Db rating 100db @ 1 metre
Frequency rating 1300 +/- 10%
Modulation 70 per minute
Overvoltage & surge protected
Reverse polarity protected
Fully encapsulated waterproof to IP65 minimum
Dimensions: 75 x 70ø mm
Night silent through orange wire

ALM-PROG

Programmable Alarm



4MB
MP3 File
USB
Operating voltage: 12V / 24V DC
Dimensions: 105 x 45 x 68 mm



WARNING / Audible Alarms



AVR81

Night Silent Reverse Alarm



Operating voltage: 12V / 24V DC
Working voltage range:
9v thru 28v
Rated current 0.4a and below
at rated voltage
Db rating 100db @ 1 metre
Frequency rating 1300 +/- 10%
Modulation 70 per minute

Overvoltage & surge protected
Reverse polarity protected
Fully encapsulated waterproof to
IP65 minimum
Dimensions: 73.5 x 70ø mm
Night silent through orange wire

AVR85R2

Double Engage Reverse Alarm



Operating voltage: 12V / 24V DC
Rated current 0.4a and below
at rated voltage
Min db rating 92db @ 1 metre
Frequency rating 900 +/- 10%
Modulation: 70 per minute
Overvoltage & surge protected
Reverse polarity protected

Fully encapsulated waterproof
to IP65 minimum
Dimensions: 101 x 67 x 45mm
Case material abs
Operating temperature
-40c to + 85c

AVR85-3

Night Silent Reverse Alarm



Operating voltage: 12V / 24V DC
Rated current 0.4a and below
at rated voltage
Min db rating 92db @ 1 metre
Frequency rating 900 +/- 10%
Modulation: 70 per minute
Overvoltage & surge protected
Reverse polarity protected
Fully encapsulated waterproof

to IP65 minimum
Dimensions 101 x 67 x 45mm
Case material abs
Operating temperature
-40c to + 85c
Night silent
through orange wire



WARNING / Work Lights



LED-WLCAM

Work Light with Built in Camera



24W Flood
8 x LED Work Light
4 Pin aviation connection
TV system: PAL
Output resolution: 576i
FPS: 25
Effective pixels: 976 x 592
Viewing angle: 110°(H) 90°(V)
Image device: 1/3" CMOS
Focal length: f: 2.1mm
Operating voltage: 12V / 24V DC
Dimensions: 114mm(W) 51mm(D) 150mm(H)



LED-WL606-F Flood Work Light



>> Approval: ECE R10 Approved
Voltage: 10-30V DC
IP Rating: IP67
Warranty: 1 Year Warranty
Output: 27W (9*3wLEDs) - 1400LM
Patterns: Spot or Flood Beam
Die Cast Aluminium Housing
Magnetic Base

LED-WL603-F Flood Work Light



>> Approval: ECE R10 Approved
Voltage: 10-30V DC
IP Rating: IP67
Warranty: 1 Year Warranty
Output: 48W (16*3wLEDs) - 2400LM
Patterns: Spot or Flood Beam
Die Cast Aluminium Housing
Stainless Steel Bracket

LED-WL604-S Spot Work Light



>> Approval: ECE R10 Approved
Voltage: 10-30V DC
IP Rating: IP67
Warranty: 1 Year Warranty
Output: 12W (4*3wLEDs) - 1080LLMM
Patterns: Spot or Flood Beam
Die Cast Aluminium Housing
Stainless Steel Bracket

LED-WL601-S Spot Work Light



>> Approval: ECE R10 Approved
Voltage: 10-30V DC
IP Rating: IP67
Warranty: 1 Year Warranty
Die Cast Aluminium Housing
Output: 18W (6*3w LEDs) - 1260LM
Patterns: Spot or Flood Beam
Stainless Steel Bracket

LED-WL602-F Flood Work Light



>> Approval: ECE R10 Approved
Voltage: 10-30V DC
IP Rating: IP67
Warranty: 1 Year Warranty
Output: 27W (9*3wLEDs) - 1400LM
Patterns: Spot or Flood Beam
Die Cast Aluminium Housing
Stainless Steel Bracket

LED-WL605-F Flood Work Light



>> Approval: ECE R10 Approved
Voltage: 10-30V DC
IP Rating: IP67
Warranty: 1 Year Warranty
Output: 27W (9*3wLEDs) - 1400LM
Patterns: Spot or Flood Beam
Die Cast Aluminium Housing
Stainless Steel Bracket



WARNING / Flashers



LED-6HA

Amber LED Heads



Approval: ECE R10/R65
Operating voltage: 12V/24V DC
IP Rating: IP67
Output: 9 x 3W LEDs
Patterns: 18 Flash Patterns
Synchronisation wire
Dimensions: 128mm x 28mm x 19mm



LPR103DVA

Low Profile Amber Strobe



Approval: ECE R10/R65
Operating voltage: 12V/24V DC
IP Rating: IP67
Output: 3 x 1W LEDs
Patterns: 11 Flash Patterns
Synchronisation with up to 20 lights
Dimensions: 89mm x 30mm x 8mm



WARNING / Flashers



LED3DVA180

Amber Strobe Light



180° visibility
Approval: ECE R10/R65
Operating voltage: 12V/24V DC
IP Rating: IP67
Output: 3 x 1W LEDs
Patterns: 10 Flash Patterns
Synchronisation with up to 10 lights
Dimensions: 111mm x 37mm x 23mm



LED3DVA

Amber Strobe Light



Approval: ECE R10/R65
Operating voltage: 12V/24V DC
IP Rating: IP67
Output: 3 x 3W LEDs
Patterns: 10 Flash Patterns
Synchronisation with up to 10 lights
Dimensions: 94mm x 37mm x 27mm



LED-4HA

Amber LED Heads



Approval: ECE R10/R65
Operating voltage: 12V/24V DC
IP Rating: IP67
Output: 9 x 3W LEDs
Patterns: 18 Flash Patterns
Synchronisation wire
Dimensions: 95.5mm x 28mm x 19mm



CATEGORY 8

Heated Seats

HEATED SEATS

QZ-CK02/A0(A)

High / Low Switch Split Pad Heated Seats



4 Pads per seat
High / Low / Off Switch
Pad Dimensions: 138 x 500mm
45 degrees C - 70 degrees C
12 Volt
E-Marked

QZ-CK01/A0(D)

3 Stage Heated Seat Pads



2 pad heated seat elements
2 pads per seat
3 stage variable heat settings
Carbon fibre design
Max temp 70C
50W max power consumption
Current drain 4.2A (max), 2.5A (med) 1.25A (low)
Dimensions 450 x 280 x 0.3mm

QZ-CK01/A0(A)

High / Low Switch Heated Seats



2 pads for one seat
High / Low / Off Switch
Pad Dimensions: 277 x 545mm
45 degrees C - 70 degrees C
12 Volt
E-Marked



CATEGORY 9

Accessories & Cables



CABLES / USB Chargers



USB-CHARGE-4

USB Charging Point



2 Port USB Socket
Standard nut installation charger
Rubber dust cover
Output voltage: 5V
Output rating: 3.1A total
Operating voltage: 12V / 24V DC
Dimensions: 60mm(W) 40mm(D) 43mm(H)

USB-CHARGE-5

USB Charging Point

USB-12V-MINI

12 Volt to 5 Volt



Illuminated Colour
Option



Single Port
Output voltage: 5V
Output rating: 2.4A
Operating voltage: 12V / 24V DC
Available in 3 different colours -
Red, white & blue



For use with dash cameras
and other 5-volt applications
Mini USB connection
Fused



ACCESSORIES / Control Units



CANM8-SCAN CAN Bus Interface



The CANM8 CANNNECT CAMSCAN interface is the ultimate CAN Bus interface for the control of external safety cameras and side scan systems on vehicles which feature CAN Bus wiring.

Speed 12V (1A max) when the vehicle speed is 0 - 15 MPH.

Reverse 12V (1A max) when reverse gear is selected.

Left Indicator Continuous 12V (1A max) when the left indicator is active and the vehicle speed is 0 - 15 MPH.

Right Indicator Continuous 12V (1A max) when the right indicator is active and the vehicle speed is 0 - 15 MPH.

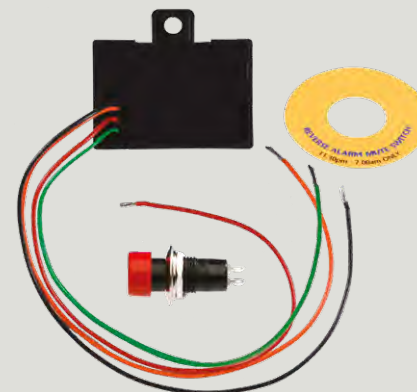


ACCESSORIES / Control Units



AVRRS6

Timed Cut
Off Switch



Six-minute timer cut-out
Auto reset
Dual voltage: 12V / 24V DC
IP67 rated - sealed against

mud, water and vibration
30(H) x 88(W) x 47(D)
Can be used with any alarm

AVSPC12

12V Heavy Duty
Split Charger - 200A

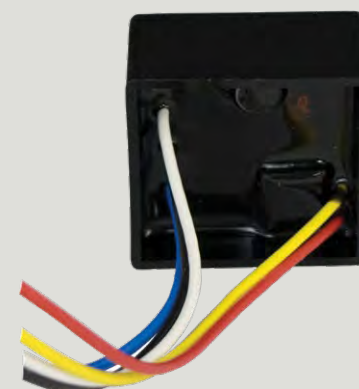


Designed for equipment powered from auxiliary batteries cannot drain the starting battery.
Rating amps: 200 A
Size: 120 x 80 x 70

Studs size: M8
Quiescent current: 1 mA
Switching voltages: 13.4V - 12.5V
24 Volt version also available

AVSMMOD1

Indicator
Module



Indicator Control Unit
Dual voltage: 12V / 24V DC
Potted to withstand vibration
Solid state electronics
Fully waterproof

Universal - fits all known applications
Compact - easily fits under dashboard

AVSPLIMO1

Speed Sensing
Device



Speed sensing device designed to turn off side scan, front sensors or side alarms above a predefined speed.
Dual voltage: 12V / 24V DC
Waterproof and dustproof

Multi-setting speeds available
Compatible with most quality manufactured products
Compact - easily fits under



ACCESSORIES / Brackets



SCAM-SPACER

Allows Side Cameras to be Mounted Further Out



Product may need to be adapted. For use with all cameras 25mm deep.

C-KO-BRACKET

Monitor Bracket



Self-adhesive pad attached to base

C-KO-DM-03

Monitor Bracket



Self-adhesive pad attached to base



CABLES



CAB-SV-MTR-4PIN

4 Pin Aviation Screw Cables



Available in 1, 3, 5, 7.5, 10, 15, 20 & 25 Metre
Male to female 4 Pin extensions

TOT-MON/DVR

Adaptor Cable for DVR / Monitor



Female 4 Pin aviation connection to RCA and power

TOT-MON/DVR-2

Female to Female 4 Pin



Power not terminated



CABLES



TOT-CAM-1

Camera Adaptor Cable



Male 4 Pin to Phono male video and Phono male audio
Unterminated bare end for live and earth



CAB-4SCR-SPLITTER

1 x Male to 2 x Female 4 Pin Splitter



GO-CONV-LEAD

4 Pin Aviation to S-Video



CABLES



CAB-VGA-5M

VGA Lead for DVR



Lead for connecting DVR to a
VGA monitor



TOT-MON/DVR-3

Adaptor Cable with BNC



Female 4 Pin aviation to BNC for video, RCA for audio
and female power



TOT-HSD-4PIN

Female HSD Water Blue to 4 Pin Connection



Power, Video, and Ground as standard





CABLES

TOT-CAM-2

4 Pin Aviation to Video Phono and DC Socket



TOT-CAM-4

4 Pin Aviation to Video Phono and Bare Ends



TOT-CAM-5

4 Pin Aviation to Video and Audio Phono and DC Socket



CABLES

TOT-CAM-7

4 Pin Aviation to Video Phono and DC Plug



TOT-BARE-MALE

Bare End Male Aviation



TOT-BARE-MALE-2

Bare End Male Aviation x 2





CABLES

TOT-BARE-FEMALE

Bare End Female Aviation



TOT-BARE-FEMALE-2

Bare End Female Aviation x 2



TOT-DC25

Bare End Power Lead



CABLES / Tractor & Trailer

CA-SUZI-CAM-4

Tractor Socket for 4 Cameras

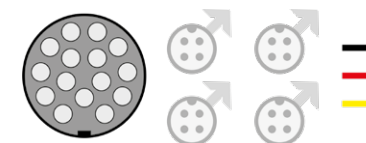
15 Pin connectors
4 x Female aviation leads
3 x Bare ended cables



CA-SUZI-MON-4

Trailer Socket for 4 Cameras

15 Pin connectors
4 x Male aviation leads
3 x Bare ended cables



CA-SUZI-COIL-15PIN

4 Metre 15 Core Electrical Coil





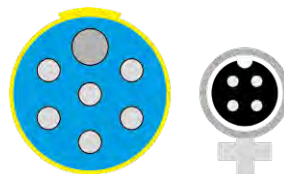
CABLES / Tractor & Trailer



CAV-TRACTOR-1-V

Socket for Single Camera

Female 4 Pin



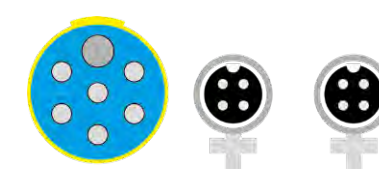
CABLES / Tractor & Trailer



CAV-TRACTOR-2-V

Socket for Two Cameras

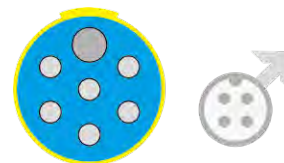
Female 4 Pin x 2



CAV-TRAILER-1-V

Socket for One Camera

Male 4 Pin

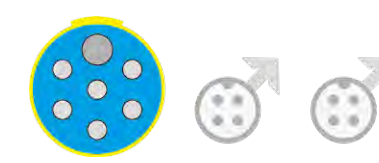


CAV-TRAILER-2-V

Socket for Two Cameras

Male 4 Pin x 2

Custom versions can be manufactured. Usual lead time 4-6 weeks.



CAV20-40

Blue Coil



Yellow 24N Connectors
Compatible with blue label sockets
4 Metre 7 Core



CAV20-20

Straight Mount for Sockets

Supplied with nuts & bolts





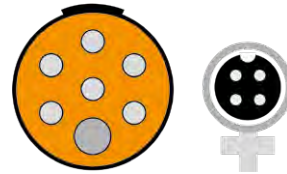
CABLES / Tractor & Trailer



CAV-TRACTOR-1

Socket for Single Camera

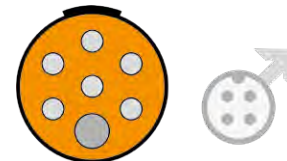
Female 4 Pin



CAV-TRAILER-1

Socket for One Camera

Male 4 Pin



CAV20-10

Right Angle Mount for Sockets

Supplied with nuts and bolts



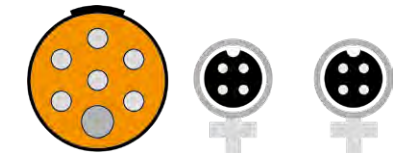
CABLES / Tractor & Trailer



CAV-TRACTOR-2

Socket for Two Cameras

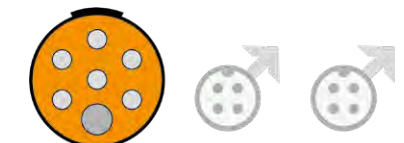
Female 4 Pin x 2



CAV-TRAILER-2

Socket for Two Cameras

Male 4 Pin x 2



CAV20-01

Orange with Inverted 24N Connectors

Inverted large pin to avoid incorrect connection
of camera system to other equipment
Compatible with orange label sockets
4 Metre 7 Core





CABLES

CAB-4PIN-12/24

24 Volt to 12 Volt Dropper

4 Pin aviation connection



CA-SW-I-4PIN

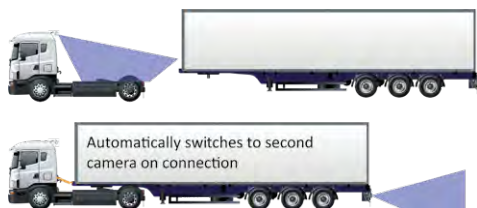
4 Pin Intelligent Switcher

Automatically Detects and
Switches when Suzi Connected
Compatible with D1, AHD & 1080p cameras
2 Camera input - 1 Video output
4 Pin aviation connection
12V DC - Dimensions: 111mm x 63mm x 31mm



CAMERA SYSTEM

Automatically detects connection of second camera.
Ideal for increasing artic safety with an additional
camera on the rear of the tractor.
Use with CKO suzi cables and connectors.
Additional 4 Pin cables of various lengths available.



SW-ROC

Rocker Switch



CABLES / Switches

SW-ROC-#

Rocker Switch with Status LED
Available in blue, red, green, and amber



Blue

Red

Green

Amber

SH6

Momentary Switch



DP1

Door Switch



Circuit open when door closed



CABLES / Adaptors



CPC-CN04147



PSG02786



Male to Female

CPC-AV02488



3.5mm Conversion to Phono

CPC-AV00999



3.5mm Conversion to Phono



CABLES / Adaptors



MAD-PX070



Phono Y-Lead
1 x Female to 2 x Male

MAD-PX071



Phono Y-Lead
1 x Male to 2 x Female

RY100

Relay Holder with Connections



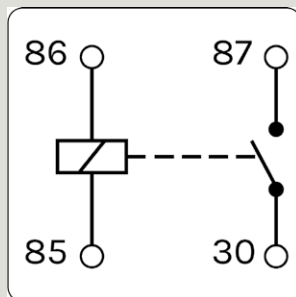


CABLES / Relays



MNRY-4-12 / MNRY-4-24

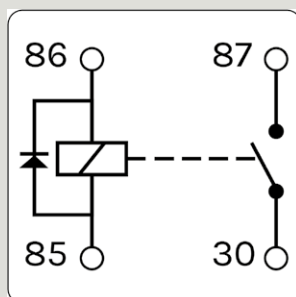
Make and Break Relay



4 Pin
12V DC or 24V DC

MNRY-4-12D

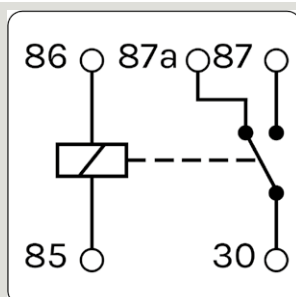
Make and Break Relay with Diode



4 Pin
12V DC

MNRY-5-12 / MNRY-5-24

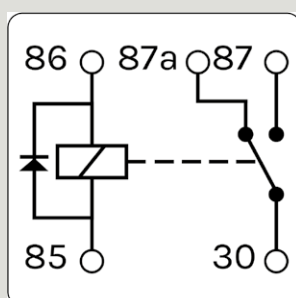
Changeover Relay



5 Pin
12V DC or 24V DC

MNRY-5-12D

Changeover Relay with Diode



5 Pin
12V DC



CATEGORY 10 Consumables



>>

Automotive Cable Information

Automotive Cable
Cores manufactured to
ISO 6722-1:2011
(Class B) 105°C
Plain Copper Conductors to BS EN
60228:2005 - PVC Insulated
Single core suitable for use at temperatures
from -40°C to 105°C
with excursions up to 120°C

Twins and multicores PVC sheathed at 70°C
Suitable for 12V and 24V systems
(Maximum voltage 60V)
Reduced insulation gives
considerable savings in weight and volume especially when
used in large wiring harnesses
Good resistance to petrol, diesel, lubricating oils and diluted
acids PVC insulation offers good resistance to abrasion and
cut through.

>

Single Core

Available in:
Black, Red, Yellow, Blue, Pink, Orange,
Grey, Green, Brown
Reel size (metres): 50, 100



Part No	*Conductor Specification (mm)	Conductor Cross Section (mm²)	Maximum Overall Diameter (mm)	Nominal Current Rating (Amps)**
TW.5	16/0.20	0.5	1.6	11
TW.75	24/0.20	0.75	1.75	14
TW1.0	32/0.20	1	1.95	16.5
TW1.5	21/0.30	1.5	2.3	21

>

Flat Twin Core

Reel size (metres): 30, 100



Part No	*Conductor Specification (mm)	Conductor Cross Section (mm²)	Maximum Overall Diameter (mm)	Nominal Current Rating (Amps)**
TW02/06	2 x 16/0.20	2 x 0.5	2.7 x 4.6	11
TW02/04	2 x 24/0.20	2 x 0.75	3.1 x 4.9	14
TW02/01	2 x 32/0.20	2 x 1.0	3.0 x 5.0	16.5

>

Twin Core

Reel size (metres): 30, 100



Part No	*Conductor Specification (mm)	Conductor Cross Section (mm²)	Maximum Overall Diameter (mm)	Nominal Current Rating (Amps)**
TW02/21	2 x 16/0.20	2 x 0.5	5.2	11
TW02/22	2 x 24/0.20	2 x 0.75	5.3	14
TW02/03	2 x 32/0.20	2 x 1.0	5	16.5

*The conductor specifications shown are representative configurations, actual cable strand may differ slightly, but will meet resistance values shown. **Nominal current amperage ratings are provided as a guide only and can vary depending on application, conditions and environmental factors. If in doubt, please consult a qualified electrician.

>

Three Core

Reel size (metres): 30, 100



Part No	*Conductor Specification (mm)	Conductor Cross Section (mm²)	Maximum Overall Diameter (mm)	Nominal Current Rating (Amps)**
TW03/03	3 x 24/0.20	3 x 0.75	5.7	14
TW03/01	3 x 32/0.20	3 x 1.0	5.5	16.5

>

Five Core

Reel size (metres): 30, 100



Part No	*Conductor Specification (mm)	Conductor Cross Section (mm²)	Maximum Overall Diameter (mm)	Nominal Current Rating (Amps)**
TW05/02	5 x 24/0.20	5 x 0.75	6.3	14
TW05/01	5 x 32/0.20	5 x 1.0	6.3	16.5

>

Seven Core

Reel size (metres): 30, 100



Part No	*Conductor Specification (mm)	Conductor Cross Section (mm²)	Maximum Overall Diameter (mm)	Nominal Current Rating (Amps)**
TW07/03	7 x 16/0.20	7 x 0.5	6	11
TW07/01	7 x 24/0.20	7 x 0.75	6.8	14
TW07/04	7 x 32/0.20	7 x 1.0	7.4	16.5

*The conductor specifications shown are representative configurations, actual cable strand may differ slightly, but will meet resistance values shown. **Nominal current amperage ratings are provided as a guide only and can vary depending on application, conditions and environmental factors. If in doubt, please consult a qualified electrician.

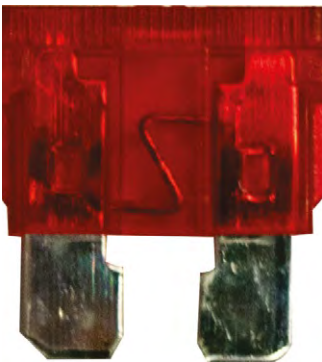


CONSUMABLES



Standard Fuse

Packs of 25
FUSE-2.0A
FUSE-3.0A
FUSE-5.0A
FUSE-7.5A
FUSE-10.0A
FUSE-15.0A
FUSE-20.0A



Mini Fuse

Packs of 25
FUSE-MINI-2.0A
FUSE-MINI-3.0A
FUSE-MINI-5.0A
FUSE-MINI-7.5A
FUSE-MINI-10.0A
FUSE-MINI-15.0A

Splash Proof Fuse



FH-205 - 5 Amp
FH-210 - 10 Amp
FH-220 - 20 Amp
FH-230 - 30 Amp

K-69681



Piggy Back Fuse Holder
For standard blade
fuses



CONSUMABLES



FUSEHOLDER-FU8-A



Used for Standard Blade Fuses.
Suitable for clipping together or
fixing using a mounting plate.

Voltage rating: 32V DC
Current rating 20A

FUSEHOLDER-FU8-B

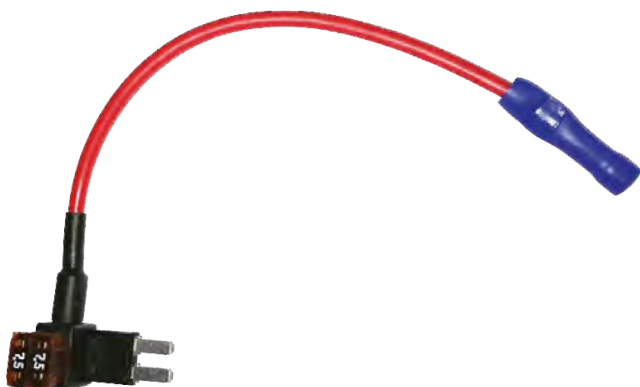


K-69680



Piggy Back Fuse Holder
For mini blade fuses

K-69682



Mini Blade Fuse Holder



CONSUMABLES



K-69666

Female Cigarette Socket Unfused



Female Cigarette Socket Unfused
1.5M

K-69671

Female Cigarette Socket Fused with 5Amp



Female Cigarette Socket Fused with 5Amp

K-69677

Female Cigarette Socket Unfused



Female Cigarette Socket Unfused
0.2M



CONSUMABLES / Terminals



Female Spade



Female Spade
WT5 – 6.3mm Blue



Insulated Female Spade
WT8 – 2.8mm Red
WT9 – 4.8mm Red
WT10 – 6.3mm Red
WT11 – 4.8mm Blue
WT12 – 6.3mm Blue
WT13 – 6.3mm Yellow

Butt / Fork



Butt
WT16 – 4mm Blue



Fork
WT16 – 4mm Blue
WT24 – 3.7mm Red
WT25 – 4.3mm Red
WT26 – 5.3mm Red
WT27 – 3.7mm Blue
WT28 – 4.3mm Blue
WT29 – 5.3mm Blue
WT30 – 6.4mm Blue
WT33 – 5.3mm Yellow
WT34 – 6.4mm Yellow

Ring



Ring
WT29 – 5.3mm Blue
WT30 – 6.4mm Blue
WT33 – 5.3mm Yellow
WT34 – 6.4mm Yellow
WT35 – 3.2mm Red
WT36 – 3.7mm Red
WT37 – 4.3mm Red
WT38 – 5.3mm Red
WT41 – 3.2mm Blue
WT42 – 3.7mm Blue
WT43 – 4.3mm Blue
WT44 – 5.3mm Blue
WT45 – 6.4mm Blue

» All Terminals conform to:
BS4579 BS4G178
Red
Blue
Yellow
Crimp Terminals
Packs of 100



CONSUMABLES / Terminals



Piggy Black / Male Tab



Piggy Black

WT55 – 6.3mm Red
WT56 – 6.3mm Blue
WT57 – 6.3mm Yellow

Male Tab

WT58 – 6.3mm Red
WT59 – 6.3mm Blue
WT60 – 6.3mm Yellow

Bullet / Receptacle Bullet



Bullet

WT63 – 4.0mm Red
WT64 – 5.0mm Blue
WT65 – 5.0mm Yellow

Receptacle for Bullet

WT66 – 4.0mm Red
WT67 – 5.0mm Blue
WT68 – 5.0mm Yellow



CONSUMABLES / Tape



TAPE-T1-N

PVC Electrical Tape 8 Pack



Black
19mm x 20M

TAPE-T9

Self-Amalgamating Tape



19mm x 20M

TAPE-T27

Double Sided Tape



50mm x 10M

TAPE-T29

Cloth Tape



Woven Cloth Tape
19mm x 25M



CONSUMABLES



Cable Ties



TIES-TR1 Nylon Cable Ties x 100 - 100mm x 2.5mm
TIES-TR2 Nylon Cable Ties x 100 - 150mm x 3.6mm
TIES-TR3 Nylon Cable Ties x 100 - 160mm x 4.8mm
TIES-TR4 Nylon Cable Ties x 100 - 200mm x 2.5mm
TIES-TR7 Nylon Cable Ties x 100 - 300mm x 3.6mm
TIES-TR8 Nylon Cable Ties x 100 - 300mm x 4.8mm
TIES-TR10 Nylon Cable Ties x 100 - 370mm x 4.8mm
TIES-TR12 Nylon Cable Ties x 100 - 430mm x 4.8mm



Split Conduit



CONDUIT-SCON1 6.5mm - 10.0mm x 25M
CONDUIT-SCON2 10.1mm - 13.0mm x 25M
CONDUIT-SCON3 11.8mm - 16.0mm x 25M
CONDUIT-SCON5 16.9mm - 21.2mm x 25M
SCT4.5-100 4.5mm - 7.2mm x 100M
SCT9-100 9.0mm - 13.3mm x 100M
SCT11-100 11.0mm - 16.4mm x 100M



TL-SCTOPEN / TL-SCTOPEN-LARGE

Split Convuluted Tubing Opener



Small - Split Convuluted Tubing Opener 6.5mm - 14.5mm
Large - Split Convuluted Tubing Opener 16.9mm - 23.1mm



CONSUMABLES



STH

Hex Head Self Drilling Screws



STH4 Hex Head Self Drilling Screws 10 x 1/2"
(Zinc plated) 8mm Head
STH6 Hex Head Self Drilling Screws 10 x 1"
(Zinc plated) 8mm Head
STH1 Hex Head Self Drilling Screws 8 x 1/2"
(Zinc plated) 7mm Head



SSPC

Stainless Steel Rubber Lined P-Clip



SSPC16 - 16mm x 25
SSPC21 - 21mm x 25
SSPC25 - 25mm x 25



PC10-B

Nylon P-Clip



PC-102-B 6.0mm - Black x 100
PC-105-B 12.0mm - Black x 100
PC-107-B 19.0mm - Black x 100



Heat Shrink



3:1 Ratio
Ideal for sealing 4 Pin aviation connections



CONSUMABLES



CONSUMABLES



AT24 800 Assorted Self Tappers



➤ Pan Head Pozidrive 6-12 gauge
(Type AB) Contents (8 Sizes)

100 x ST3 (6 x 1/2) 100 x ST10 (10 x 3/4)
100 x ST4 (6 x 3/4) 100 x ST13 (12 x 3/4)
100 x ST6 (8 x 1/2)
100 x ST7 (8 x 3/4)
100 x ST8 (8 x 1)
100 x ST9 (10 x 1/2)

AT38 Assorted Stainless Steel Self Tappers (450)



➤ +Pozi Pan. DIN7981 Grade 2 (Type AB)
Contents (9 Sizes)

6 x 1/2 10 x 1/2
6 x 3/4 10 x 3/4
6 x 1" 10 x 1"
8 x 1/2
8 x 3/4
8 x 1"

AT110 200 Assorted Micro Fuses



➤ 200 Assorted Micro Fuses
3-30 Amp

AT130 Assorted Box of 3:1 Heat Shrink



➤ Mixed Adhesive Lined
UL approved. UL 224 VW-1.
Contains: 225 pieces 3mm - 18mm

AT71 700 Assorted Self Tappers



➤ Black Flanged (6-10 Gauge)
Contents (7 Sizes)

100 x ST16 (6x1/2) 100 x ST23 (10x3/4)
100 x ST17 (6x3/4)
100 x ST18 (6x1)
100 x ST19 (8x1/2)
100 x ST20 (8x3/4)
100 x ST22 (10x1/2)

AT163 Assorted Pan Head



➤ Self-drilling Self-tappers (Pozi)
Qty 1200

GRO-MG Mixed Blanking Grommets



➤ Assorted box of blanking grommets
6 - 25mm

25mm x 30pcs
20mm x 50pcs
16mm x 50pcs
12mm x 50pcs
9mm x 50pcs
6mm x 50pcs

GRO-WG Mixed Wiring Grommets



➤ Assorted box of wiring grommets
6 - 25mm

25mm x 30pcs
20mm x 50pcs
16mm x 50pcs
12mm x 50pcs
9mm x 50pcs
6mm x 50pcs



CATEGORY 11 Tools



TOOLS

TL-SCUTTER

Step Cone Cutter



MCC-10 - 4-12mm

MCC-11 - 4-20mm

MCC-12 - 6-30mm

TL-CRIMPER

Crimper



TL-WIRECUTTER

Wire Cutter



TL-HEX-2.0MM

Hex Driver 2.0mm



Ideal for use with side camera screws



TOOLS / Soldering



SOL8

Gas Powered Soldering Iron



LS6

Butane Gas (400ml)



High-quality Butane

Suitable for refillable soldering irons, blow lamps, and cigarette lighters

SOLDER-0.8MM

SOLDER-0.8MM / 1.2MM



SOLDERTIP-1



SOLDERTIP-5



SOLDERTIP-9



SOLDERTIP-2



SOLDERTIP-6



SOLDERTIP-10



SOLDERTIP-3



SOLDERTIP-7



SOLDERTIP-11



SOLDERTIP-4



SOLDERTIP-8



CATEGORY 12 Cash Boxes

CABLES
ACCESSORIES
CONSUMABLES





CASH BOXES



CASH BOX-F

Drivers Cash Box Anti-Dipper



High Impact ABS with Mild Steel support to make for a light weight yet very strong drivers cash box with 2 mild steel fixing points that will fit most standard hooks or can be utilised with our mounting plate. 4 Compartment



CASH BOX-E

Drivers Choice, Bus Drivers Cash Box Anti-Dipper Bucket



High Impact ABS with Mild Steel support to make for a light weight yet very strong drivers cash box with 2 mild steel fixing points that will fit most standard hooks or can be utilised with our mounting plate. 4 Compartment



CASHTRAY-DOUBLE

Bus Change Tray



Door mounted change tray
Single version also available



CASH BOXES



CASH BOX-D

Drivers Cash Box Drivers Choice



High Impact ABS with Mild Steel support to make for a light weight yet very strong drivers cash box with 2 mild steel fixing points that will fit most standard hooks or can be utilised with our mounting plate. 5 Compartment



CASHBOX-MOUNT

Cash Box Mounting Plate



Heavy duty drivers Cash Box mounting plate, easy fix mounting.



NAMETAG-1

Depot Name Tag Holder



BR Cat Number: B3-A2-8700057
Name Tag Holder Polycarbonate Tube & PE End Plug

ISO9001

We are extremely proud to have passed and been awarded The Management System Certification ISO9001 for:

THE PROVISION OF THE DESIGN, DEVELOPMENT AND DELIVERY OF IT PROJECTS



CKO

THE VEHICLE SAFETY EXPERTS

Are you FORS compliant?

Safety

Communication

Security

Solutions for safer, greener, and more efficient fleet operations.

With over 30 years' experience designing, developing, and distributing vehicle products and solutions, you can place your trust in CKO. Our knowledgeable team can offer you tailored support to meet your required regulatory standards, ensuring that your fleet is compliant for operation within the modern commercial vehicle world.

As associates of the Fleet Operator Recognition Scheme, CKO can assist you in meeting all your FORS safety requirements by offering a range of solutions for measuring, monitoring, and improving vehicle performance - enabling Operators to achieve exemplary levels of best practice.

Find out how we can help. Contact our team today to achieve your Bronze, Silver, or Gold FORS membership.

Call 020 8863 8333 (Option 1)



CKO
THE VEHICLE SAFETY EXPERTS



THE VEHICLE SAFETY EXPERTS

CKO VEHICLE SAFETY EXPERTS

UNIT 1

THE HAWTHORN CENTRE

ELMGROVE ROAD

HARROW, HA1 2RF

+44 (0) 20 8863 8333

C-KO.CO.UK SALES@C-KO.CO.UK

