



THE VEHICLE SAFETY EXPERTS

PRODUCTS
CATALOGUE
2020





CKO has been involved in the design, development and distribution of products and project solutions for over 30 years. Working directly with established manufacturers in the far east, UK and Europe to meet the safety and leisure requirements of our customers in the commercial vehicle and automotive industries.

We offer an extensive range of products from stock and competitive & viable lead times to meet our customer's special requirements.

WELCOME >>



>> Safe in our hands

Buying from CKO brings you the extra reassurance of our in-house technical team. We evaluate and test all our products before they go to market and undertake repairs on warranty items directly in our technical department.

This together with our technical help line allows us to provide a full back up service to our customers who can have the confidence in our long-term support and warranty responsibilities.

The aim of our business is to offer quality products, value for money and great service as we recognise that customer satisfaction is at the core of our business.

Managing Director
Steve Keogh

CONTENTS >>

Category 1
Introduction to
Compliance / Live View
2 - 11

Category 2
Digital Video
Recording
12 - 17

Category 3
Dash Cameras
18 - 25

Category 4
Cameras
26 - 47

Category 5
Monitors & Camera
Kits
48 - 63

Category 6
Proximity & Parking
Sensors
64 - 69

Category 7
Warning Alarms &
Lighting
70 - 79

Category 8
Heated Seats
80 - 81

Category 9
Multimedia &
Entertainment
82 - 87

Category 10
Cables &
Accessories
88 - 121

Category 11
Power Inverters
122 - 123

Category 12
Consumables
124 - 141

Category 13
Tools
142 - 145

Category 14
Cash Boxes
146 - 149

Category 15
New Listings
150 - 160

ABOUT US >>

> COMMERCIAL VEHICLES AND COMPLIANCE

Our wide range of products will help you meet all your compliance needs and we can offer you tailored support to understand what you and your customers need. Enabling you to achieve Bronze, Silver and Gold FORS standards, ensuring your vehicles are compliant. CKO is here to take the trouble out of meeting those standards.

With over 30 years' experience, our staff are here to guide you through the maze of requirements and assist you in meeting the standards you need in order to operate your fleet within the modern commercial vehicle world.

Our extensive range provides solutions for rear, front and side vision, safe reversing and manoeuvring, digital video recording on SD card, hard drive or through live-view ensuring incidents can be managed swiftly, claims supported or rebuffed and driver behaviour monitored.

> BENEFITS OF CKO COMPLIANCE SYSTEMS

- >> Access to new contracts – a comprehensive vehicle safety system will meet all your requirements for FORS and WRRR; Crossrail, TfL, HS2 and other publicly funded projects
- >> Access to London – the Mayor of London's Safer Lorry Scheme applies to all HGV's entering or operating within London
- >> Reduces down-time following incidents and collisions
- >> Reduces money spent on insurance claims, premiums and 'false-claims'
- >> Reduces money spent on collision repairs
- >> Reduces reputational risk
- >> Demonstrates company's social responsibility programme
- >> Potential to reduce theft (vehicle and load)

> PASSENGER VEHICLES

For Saloon Cars, Caravans, Taxis and Motor Homes we have products for safe manoeuvring, recordable devices, dash-cams, entertainment, digital radio and heated seats to keep you cosy and warm.

> TECHNICAL KNOW-HOW AND WARRANTY RETURNS

Buying from CKO brings you the extra reassurance of our in-house technical team. We evaluate and test all our products before they go to market and undertake repairs on warranty items directly in our technical department.

This together with our technical help line allows us to provide a full back up service to our customers who can have the confidence in our long-term support and warranty responsibilities.

The aim of our business is to offer quality products, value for money and great service as we recognise that customer satisfaction is at the core of our business.

> WARRANTY TERMS AND CONDITIONS

CKO warrants all goods to be free from defect in material and workmanship in normal use provided that they have been installed and operated in accordance with the instructions supplied. The start date of all warranties is the date of delivery to the purchaser unless otherwise agreed in writing by CKO. The period during which the Two Year Warranty applies is stated above. CKO make no other warranty, express or implied, with respect to the goods, their marketability, quality or fitness for any particular use or purpose. In particular, but without prejudice to the general provisions of the conditions of sale, no responsibility is assumed for incidental or consequential loss by reason of any warranty express or implied. Full details of CKO's Terms and Conditions are contained on our website www.c-ko.co.uk. CKO International Limited reserves the right to change terms, conditions and specifications shown in this catalogue at any time. All Information within this catalogue was correct at time of going to print.



COMPLIANCE >>

> ADDITIONAL BENEFITS

The level of public scrutiny that has come to focus on the commercial vehicle sector in the last five years has resulted in a fundamental shift. It is now a commercial necessity for fleet operators to invest in safety equipment that will enable them to continue to gain access to construction sites and win contracts on infrastructure projects such as Crossrail and HS2.

Soon, it will be impossible to operate without being able to demonstrate compliance with established standards. CKO is here to take the trouble out of meeting those standards. With over 30 years' experience, our staff are here to guide you through the maze of compliance requirements and assist you in meeting the standards you need in order to operate your fleet within the modern commercial vehicle world.

We all have families outside of our work-lives so we all want our roads to be safe places. Commercial vehicle operators may have been unfairly targeted by the media but they also have a responsibility to other vulnerable road users going about their daily lives. Not only is the safety of vulnerable road users a personal issue, it also makes commercial sense.

The Fleet Operator Recognition Scheme (FORS) is a voluntary accreditation scheme that promotes best practice for commercial vehicle operators. Using a progressive three-tiered scheme (Bronze, Silver, Gold) it recognises safer, greener and more efficient fleet operations. CKO can assist you in meeting all your FORS safety requirements. FORS encompasses all aspects of safety, efficiency, and environmental protection by enabling fleet operators to measure, monitor and improve performance. FORS provides accreditation pathways for operators of any type, and for those organisations that award contracts and specify transport requirements.

> BENEFITS OF CKO COMPLIANCE SYSTEMS

- >> Access to new contracts – a comprehensive vehicle safety system will meet all your requirements for FORS and WRRR; Crossrail, TfL, HS2 and other publicly funded projects
- >> Access to London – the Mayor of London's Safer Lorry Scheme applies to all HGV's entering or operating within London
- >> Reduces down-time following incidents and collisions
- >> Reduces money spent on insurance claims, premiums and 'false-claims'
- >> Reduces money spent on collision repairs
- >> Reduces reputational risk
- >> Demonstrates company's social responsibility programme
- >> Potential to reduce theft (vehicle and load)



> COMPLIANCE

FORS Bronze, Silver and Gold membership provides progressive accreditation enabling operators to achieve exemplary levels of best practice. FORS members stand out from the crowd, work to standards above the legal minimum and have access to a wide range of exclusive benefits that provide a real competitive advantage.

FORS is relevant to commercial operators in three classes: Trucks (V5) Vans (V2) and Passenger carrying vehicles (PCV – V6). Some specific measures apply to particular classes.

- Trucks** – commercial vehicles over 3.5 tonnes gross vehicle weight
- Vans** – commercial vehicles of 3.5 tonnes gross vehicle weight or under
- PCV's** - Any vehicle with 8 or more passenger carrying seats

> C-KO Packages

We have divided our compliance packages into three simple to understand classes. Rather than basing them in any one of the schemes, we will be able to advise you on the package that suits you best. The variations also depend on the type and class of vehicle you want to fit HGV, Van, PCV, 3.5 T or above, rigid, articulated etc)

- Elementary / Basic** – the minimum requirements to meet the vehicle safety measures
- Advanced** – gives much more control to the driver in reducing road user risk
- Comprehensive** – gives much more control to the transport manager and ensures evidence is recorded both live and for later inspection



Product Specification



4G



LiveView

- Vehicle tracking by GPS – current location and speed of the vehicle can be seen.
- Alerts regarding faults such as geo-fencing breaches, failing hardware, switch to SD card recording, video loss on channel e.g faulty camera
- Remote download footage can be viewed through mobile phone or PC
- Historical footage – downloadable footage for the last month
- Change settings remotely – settings such as camera resolution, date, time and recording settings can be changed remotely. Software updates can also be sent remotely.
- Multiple vehicle viewing – the interface can show 32 live and recorded streams at one time, meaning that many fleets can be managed on a single interface.



LiveView

- SOS button – The introduction of our SOS button on the DVR means if an incident occurs the driver can push it and central office will be immediately notified and able to investigate the issue. As well as time and date, a video clip of between 1 to 2 minutes can be saved on the server from when the alarm is pushed on the device.
- Geofencing – multiple fences can be applied and notifications will alert the user when a vehicle enters or leaves those zones. Not only does this provide an anti-theft security feature, businesses can also use geofencing to monitor employees in the field, automate time cards and keep track of individual vehicles over particular time periods.



The CKO Live view system offers secure multi-network real-time video-stream and GPS tracking for your single or multiple vehicle fleet. With our system any user can view up to 16 separate streams, at any one time, with two users you can double that to 32.

Using the registration number as the default code and the depot to allocate the group it is simple to classify a fleet of vehicles and enable different users' permissions to access sets of information.

INTRODUCTION

Live View is a 4G based service offered by CKO enabling customers to view individual vehicles and whole fleets with real-time and historical footage. We offer monthly and annual payment terms on a 12-month contract for which we provide:

- PC software
- iOS and android phone software
- Device SIM
- Data server
- Customised email alerts & notifications
- Telephone and remote access support
- UK networks

FUNCTIONALITY

Our system offers market-leading functionality:

- Vehicle tracking by GPS – current location and speed of the vehicle can be seen
- Alerts regarding faults such as geo-fencing breaches, failing hardware, switch to SD card recording, video loss on channel e.g faulty camera
- Remote download footage can be viewed through mobile phone or PC
- Historical footage – downloadable footage for the last month
- Change settings remotely – settings such as camera resolution, date, time and recording settings can be changed remotely. Software updates can also be sent remotely.
- Multiple vehicle viewing – the interface can show 32 live and recorded streams at one time, meaning that many fleets can be managed on a single interface.
- SOS button – The introduction of our SOS button on the DVR means if an incident occurs the driver can push it and central office will be immediately notified and able to investigate the issue. As well as time and date, a video clip of between 1 to 2 minutes can be saved on the server from when the alarm is pushed on the device.

» Geofencing – multiple fences can be applied and notifications will alert the user when a vehicle enters or leaves those zones. Not only does this provide an anti-theft security feature, businesses can also use geofencing to monitor employees in the field, automate time cards and keep track of individual vehicles over particular time periods.

» Without Live-view, if your vehicle was involved in an incident, you would only hear about what's happened once your driver gets back and reported it. With our live-view system you will receive notifications, tailored to your own specification. In case of an incident, an alarm will be displayed on the live-view page or direct to your mobile phone. It does not interrupt the user view, but like an exception report, it can prompt action by alerting users that action is required.

HISTORIC TRACKING

The Real-time vehicle locator can be expanded to show single or multiple vehicle locations. If a vehicle is offline, the last location where it was connected will be displayed.

The 'Track' tab provides the historic location, speed and DVR status. Usefully, it can map historic route showing where the vehicle travelled in 30 second intervals. It is possible to search this function by time and date. The information is stored on our dedicated secure server meaning that vehicles that are not online can also be checked. In terms of vehicle safety and security this is an added bonus of the Live View system and when added to the 'status' of the DVR, can help highlight issues of suspected device tampering or fuel theft.

REMOTE DOWNLOAD & HISTORIC VIEWING

Our standard tariff comes with a fair-use cap, but additional data can be purchased in bundles. Historic recordings can be remotely downloaded or streamed online by pinpointing the desired time and date. This allows the user to act quickly in response to incident reports. The file is saved in several ways, on the local device and on our server. Single or multiple channels can be downloaded and saved in a secure format, only playable on our local PC software where it can be converted to AVI if required.

Photos can also be viewed using the Record tab, the photos are snapshots that can be linked to the alarms and other custom settings from the server side. The photos are saved to our dedicated secure server.

Alarm inputs can be linked to different events, e.g the rear door opening for a delivery. This type of setting does require additional wiring and configuration is required, but greatly enhances the functions available and can be tailored for the specific needs of the business.

EMAIL NOTIFICATION

We recommend that email alerts are sent to a dedicated person in your company. In the event of equipment failure this provides you with a fail-safe beyond the driver's daily walk-around check. Under FORS Standard v5, daily checks of electronic safety is now compulsory. In the event of DVR video loss or hard drive failure an email alert can be sent to those who need to know within your organisation.

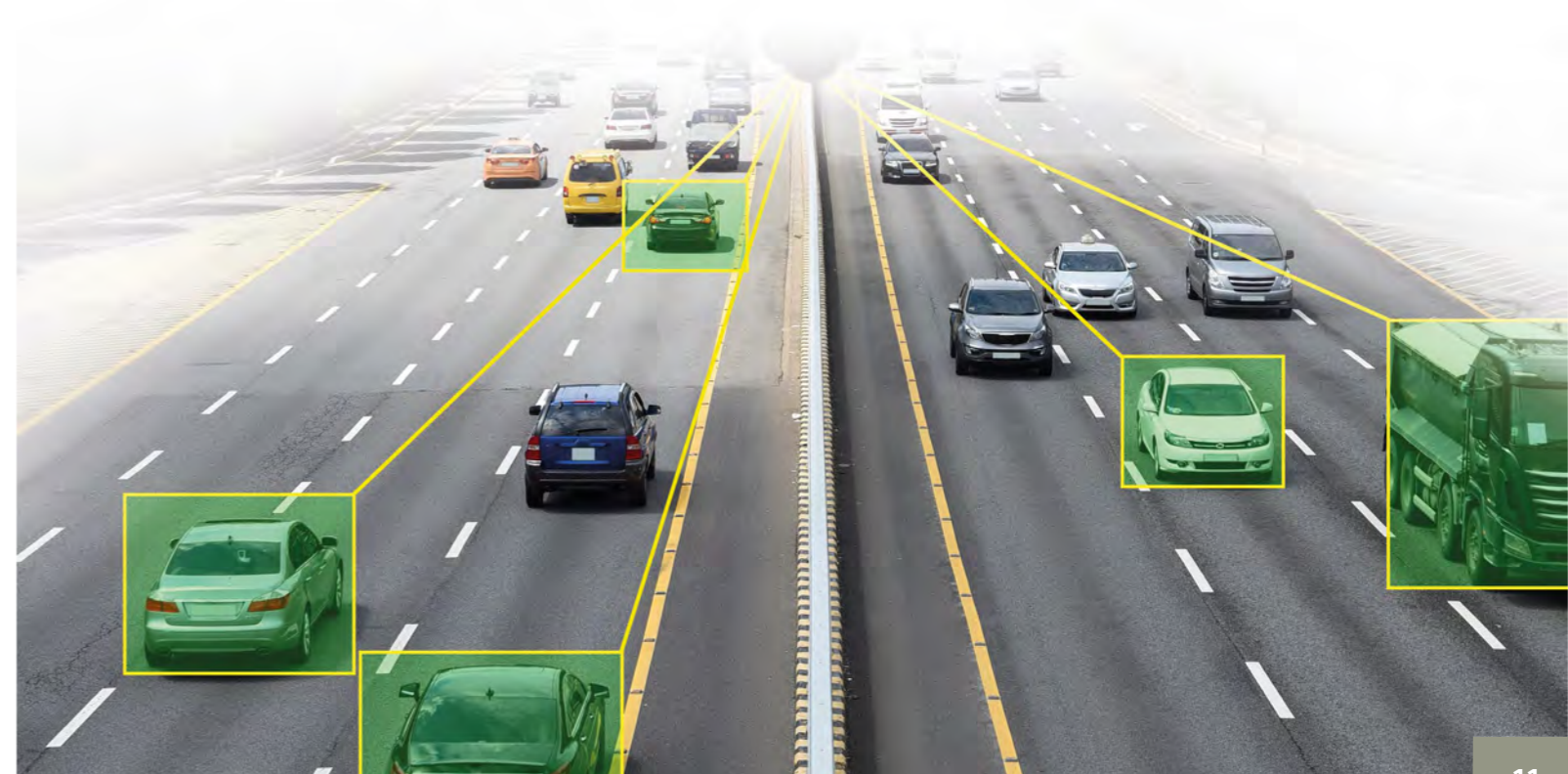
After understanding your needs, and with your permission, email alerts can be set up to multiple email addresses per vehicle or per group of vehicles. Custom input alarms can also be set to report by email at certain times or when an SOS button is press. As part of the initial set up, we can talk through your business needs and customise the settings to get the most out of our Live View system.

PHONE APP

The phone app provides the most basic information compared to the feature-packed desktop version. However, for quick and easy reference, the phone app allows users to check if vehicles are online, view the cameras in real time and see their current or last location.

CHANGING DVR SETTINGS

Our Live View desktop application allows DVR configuration settings to be changed. Settings, like alarm triggers, camera types and many others can be altered without having to be with the vehicle. Current setting can also be displayed. Making changes to settings after installation may be advantageous to tweak the systems usability or when new features become available. The DVR must be connected to Live View to access this function. User access control levels can be set so that settings can only be altered by those with the necessary permissions, securing alterations and ensuring consistency across the fleet.





CATEGORY 2 / DVR Devices



BENEFITS

Safety

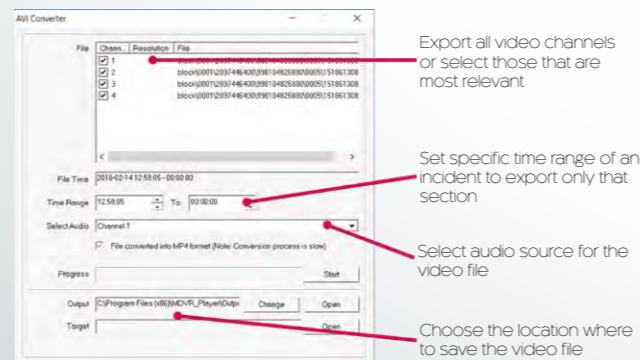
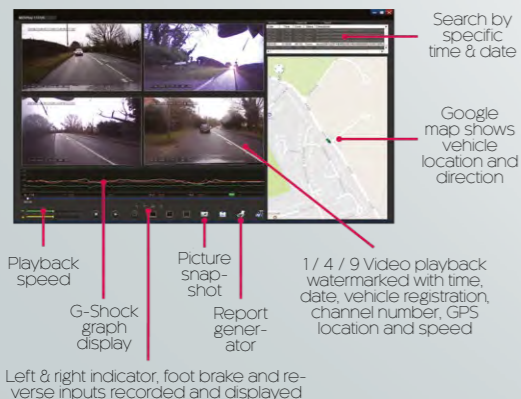
Monitoring of driving ability and standards
Improved driver manoeuvring visibility
Safe loading and unloading practices
Driver concentration and fitness to drive

Protection

Load security and damage prevention
Crash-for-cash, inflated and fraudulent claims
Unjustified personal injury claims



- Record up to 8 channels video and audio, plus 1 IPC
- Built in GPS for vehicle location, speed and time which is also watermarked including vehicle registration on video footage
- Built in 3-axis G sensor to detect vehicle impact, harsh braking and rapid acceleration
- Customisable alarm inputs to record events and automatically view selected cameras on screen, for example to display side camera when indicating
- Alarm outputs to trigger other devices
- Intelligent voltage protection to turn the DVR off at specified parameters
- Options for time sync with GPS and automatic Daylight-Saving time switch
- 3 power modes - Ignition switches on and off with the vehicle's ignition, timed turns on and off at set times and Standby keeping the DVR on and switches the cameras off.
- 3 recording modes - Power records when the time is on, Timed records at specified times and Alarm only records alarm files
- Records in AHD 1080p & AHD 720p or D1 camera format, with options to have a mixed format
- SD card back up function
- Snap shot image alarm function and export config files by USB for fleet continuity
- Cameras can be mirrored and flipped on the DVR



DVR COMPARISON



DVR COMPARISON

	AHD-100	AHD-401	AHD-601	AHD-801
Recording				
Max Resolution	720p (1280 x 720)	1080p (1920 x 1080)	1080p (1920 x 1080)	1080p (1920 x 1080)
Channels	4	4	6	8
Audio	✓	✓	✓	✓
Video Compression	H.264 Encrypted AVI	H.264 Encrypted AVI	H.264 Encrypted AVI	H.264 Encrypted AVI
AHD Compatible	✓	✓	✓	✓
IPC Compatible	X	1 Channel	1 Channel	1 Channel
AV in / out				
Video input	4 x 4 Pin aviation	4 x 4 Pin aviation	6 x 4 Pin aviation	8 x 4 Pin aviation
Video output	4 Pin aviation, VGA	4 Pin aviation, VGA	4 Pin aviation, VGA	4 Pin aviation, VGA
Audio input	4 x 4 Pin aviation	4 x 4 Pin aviation	6 x 4 Pin aviation	8 x 4 Pin aviation
Audio output	4 x 4 Pin aviation	4 x 4 Pin aviation	6 x 4 Pin aviation	8 x 4 Pin aviation
OSD	1 / 2 / 4	1 / 2 / 4	1 / 2 / 4 / 6 / 9	1 / 2 / 4 / 6 / 9
Network streaming				
Ethernet Port	✓	✓	✓	✓
Wi-Fi	Optional	Optional	Optional	Optional
4G Compatible	Optional	Optional	Optional	Optional
Mobile App	Android / iOS	Android / iOS	Android / iOS	Android / iOS
Storage / Backup				
HDD / SSD	X	2.5" SATA II (2TB max)	2.5" SATA II (2TB max)	2.5" SATA II (2TB max)
SD Card	2 x SDxC (128GB max)	1 x SDxC (128GB max)	1 x SDxC (128GB max)	1 x SDxC (128GB max)
Backup	USB 2.0 / Network	USB 2.0 / Network	USB 2.0 / Network	USB 2.0 / Network
Peripheral				
Lockable	✓	✓	✓	✓
GPS	✓	✓	✓	✓
G-Sensor	✓	✓	✓	✓
Timer off Delay	Up to 24 hours	Up to 24 hours	Up to 24 hours	Up to 24 hours
HDD / SD Failure Warning	✓	✓	✓	✓
Motion Detection	X	X	X	X
Camera Full Screen Trigger	✓	✓	✓	✓
Split Screen Camera Trigger	X	✓	✓	✓
Remote Control	✓	✓	✓	✓
USB Port	USB 2.0	USB 2.0	USB 2.0	USB 2.0
Other				
Power output	12v	12v	12v	12v
Power input	8 - 36v (DC)	8 - 36v (DC)	8 - 36v (DC)	8 - 36v (DC)



CATEGORY 2 / DVR Accessories >>



DVR Accessories

CT-TRAY



Spare DVR
Caddy

Supplied without media installed
Please note that the DVR needs to format new media to allow recording to begin
USB 2.0 Type B connection on rear

CT-REMOTE



Spare
Remote
Control

Spare Remote Control for DVR
Supplied with battery
Additional batteries also available

CT-USB-LEAD



USB Lead

Connection from
CT-Tray to PC
USB 2.0 Type A to Type B

2.5" Hard Disc Drive



2.5" Hard Disc Drive
1TB or 2TB

See Price List for P/N
On factory settings a DVR will use 1.2GB per hour per channel at 720p
2-year manufacturer warranty
Available in 1TB or 2TB capacity
7mm - SATA III-6Gb/s
5400rpm - 128MB Cache

2.5" Solid State Drive



2.5" SSD
250mb,
500mb,
1TB, 2TB

See Price List for P/N
On factory settings a DVR will use 1.2GB per hour per channel at 720p
Solid state drives - recommended for DVRs
5-year manufacturer warranty
Available in 250MB, 500MB, 1TB & 2TB capacity
7mm - SATA III-6Gb/s

SD Card



SD Card
64 GB

See Price List for P/N
Available in various memory capacity
Can be used with our DVRs to record footage
We recommend 64GB, on factory settings the DVR will use 650MB per channel per hour as recording quality is reduced
Function must be enabled on DVR to switch to SD card recording in the unlikely event of hard drive failure



CATEGORY 2 / DVR Accessories >>



DVR Accessories

CT-SOS



SOS Button and IR/
LED Status Light Extension

SOS Button and IR / LED Status Light Extension
Push to make switch
When pressed alerts operator of an event

CT-MIC



Discrete
Microphone

Discrete Microphone for Audio Recording
Requires 12 Volt

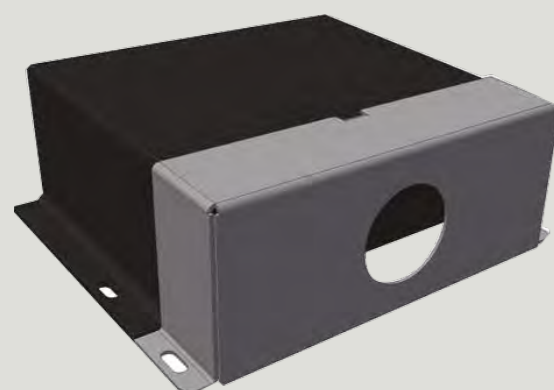
DVR-3G/4G-ANT



External
Antenna

External 3G / 4G Antenna
SMA Male connection

CT-CASE



Cable Tampering
Preventer

Cable Tampering Preventer
Prevents drivers removing cables from the rear of the DVR

DVR-A1-ANT



External
Multipurpose
Antenna

External Multipurpose Antenna
4G, 3G, Wi-Fi and GPS 3M adhesive and fastened by
three self-tapping screws
120mm diameter
3metre lead
SMA Male connection

CT-SWITCH



Illuminated
Switch

Illuminated Incident Switch. Push to make switch
When pressed alerts operator of an event
Dimly illuminated to show DVR has power
Includes label
22mm hole diameter
12 Volt



CATEGORY 3



DC-DVR-E-RCAM
External Rear Camera



DASH CAMERAS / Front / Rear Facing

DC-DVR-E7-F

Front Facing Dash Camera



- 1 Camera
- 145° FOV
- External GPS
- G-Shock & Speed
- 1080p
- Wi-Fi download & setting control
- 128GB Max.
- Galaxy Core GC2023
- SD Card concealed in mount
- Tamperproof Cable
- 30 FPS
- 3MP
- Built in Microphone
- Additional Camera input
- 16GB TF Card Included
- Park Mode
- Ignition Timer Relay
- Built in Battery Protector
- Upto 11m Extension Cable Available to Purchase for Second Camera
- Tamperproof label included



DC-DVR-E-RCAM

External Rear Camera for E7 & E200



DC-DVR-E-IR

Internal IR Camera for E7 & E200



DC-DVR-E-REAR

Internal Rear Camera for E7 & E200

DASH CAMERAS / Front / Rear Facing

C-KO-ELITE-PLUS-DL2

Front & Driver Facing Camera



2 Cameras
125° FOV / 149° FOV Internal
Internal GPS
G-Shock & Speed
1080p
Tamperproof Lockable Caseav
128GB Max.
OV4689 CMOS
Lockable SD Card
Wi-Fi
30FPS
4MP
Built in Microphone



C-KO-ELITE-IR

IR Module for Elite Dash Cameras
Included in Box



C-KO-ELITE-INT-NONIR

Internal Non-IR Camera



DASH CAMERAS / Front / Rear Facing

DC-DVR-E200-F

Dash Camera with External ECU



1 Camera
130° FOV
External GPS
G-Shock & Speed
1080p
Wi-Fi download & setting control
128GB Max.
Sony IMX323
Tamperproof Cable
30 FPS
3MP
Optional External Microphone
Additional Camera input
16GB TF Card Included
Park Mode
Ignition Timer Relay
Built in Battery Protector
11m Extension Cable for Second Camera



C-KO-ELITE-TOPAZ-PLUS

Front Facing Camera 1 Camera 125° FOV Internal GPS G-Shock & Speed 1080p Wi-Fi 128GB Max.	OV4689 CMOS Lockable SD Card Tamperproof Lockable Case 30FPS 4MP Built in Microphone Additional Camera input
--	---



C-KO-ELITE-INT-IR

Internal IR Camera



C-KO-ELITE-VCAB

Video Output Cable





DASH CAMERAS

ROADHAWK-DC3-DASHCAM

Front Facing Dash Camera



- | | |
|--------------------------|-----------------------|
| 1 Camera | Optional Tamperproof |
| 120° FOV | Cable |
| Internal GPS | 30 FPS |
| G-Shock & Speed | 4MP |
| 1080p | Built in Microphone |
| 128GB Max. | Optional Event Button |
| OmniVision OV4689 | 8GB TF Card Included |
| Optional Lockable Casing | |

ROADHAWK-LOCK

Tamperproof
Case



ROADHAWK-HARDWIRE

Hardwire
Kit



DASH CAMERAS

MIO-C330

Front Facing Dash Camera



- Front Facing Dash Camera
- 1 Camera
 - 130° FOV
 - Internal GPS
 - G-Shock & Speed
 - 1080p
 - Safety Camera Warnings
 - 128GB Max.
 - AIT8328D
 - 30 FPS
 - 2MP
 - Built in Microphone
 - 2 Inch Display
 - Park Mode

MIO-C380DUAL

Front & Rear Facing Dash Camera



- 2 Cameras
- 130° FOV
 - Internal GPS
 - G-Shock & Speed
 - 1080p
 - Safety Camera Warnings
 - 128GB Max.
 - SONY CMOS
 - 30 FPS
 - 2MP
 - Built in Microphone
 - 2 Inch Display
 - Park Mode

DASH CAMERAS / Front / Rear Facing

DC-DVR770 - 2



Front Facing Dash Camera

1 Camera
140° FOV
Internal GPS
G-Shock & Speed
1080p
Advanced Safety Camera,
Speed & Traffic Light Warnings
Wi-Fi

64GB Max.
SONY EXMOR
Optional tamperproof cable
30FPS
2.19M
Built in Microphone
16GB Included
Park mode

DC-TW-GPS



DC-TW-HW



Hardwire
Cable av

DC-DVRF70-LOCK



Front Facing Dash Camera

1 Camera
140° FOV
Optional External GPS
G-Shock,
Speed if GPS option connected
1080p
64GB Max.

CMOS
Optional tamperproof cable
30 FPS
2.1MP
Built in Microphone
8GB Included
Park mode

DC-TW-HW



Tamperproof Case for F70

DC-DVR-VT200



3G Dash Camera

1 Camera
170° FOV
Internal GPS
G-Shock & Speed
1080p
64GB Max
CMOS SENSOR

Lockable
Tamperproof Cable
30FPS
3MP
Built in Microphone
32GB Included
Park Mode

DASH CAMERAS / Front / Rear Facing

BLACKVUE-DR900-2CH



Forward 4k Camera and Rear Facing Camera

2 Camera
162° FOV / 139° FOV
Internal GPS
G-Shock & Speed
4K / 1080p
Wi-Fi download & setting control
128GB Max.

SONY STARVIS
30 FPS
8MP / 2.1MP
Built in Microphone
Park Mode
Single Camera Version available

BLACKVUE-DR750-2CH-TRUCK



Dash Camera with External Rear Camera

2 Camera
139° FOV / 120° FOV
Internal GPS
G-Shock & Speed
1080p
Wi-Fi download & setting control
128GB Max.
SONY STARVIS

Optional Tamperproof Casing
60 FPS / 30 FPS
2.1MP
Built in Microphone
Park Mode with Power Magic
Single Camera Version available
Cameras Available with 16GB, 32GB,
64GB & 128GB

BLACKVUE-DR750-TAMP



Tamperproof
Case for DR750

BLACKVUE-BV124



BLACKVUE-BV124

BLACKVUE-POWERMAGIC-PRO



Blackvue
Powermagic-pro

BLACKVUE-CARD-MSD



Blackvue-card-msd



CATEGORY 4



AHD-FCAM-1080P
Front Facing Camera
4 Pin aviation connection



AHD CAMERAS / 1080P

AHD-RCAM-1080-P



1080p Heavy Duty Rear Camera 4 Pin aviation connection

TV system: AHD
Output resolution: 1080p
FPS: 25
Viewing angle: 89°(H) 72°(V) 103°(D)
Image device: 1/3" CMOS
Focal length: f: 2.8mm
Operating voltage: 12V DC
Dimensions: 80mm(W) 63mm(D) 70mm(H)
Mirror image

AHD-FCAM-1080P



Front Facing Camera 4 Pin aviation connection

Mini BMW connector to 4 Pin aviation for easier application
TV system: AHD
Output resolution: 1080p
FPS: 25
Viewing angle: 130°(H) 70°(V)
Image device: 1/4" CMOS
Focal length: f: 2.3mm
Operating voltage: 12V DC
Dimensions:
39mm(W) 35mm(D)
30mm(H)



CA-COVER

Camera Cover For AHD-FCAM-1080p

AHD-SCAM-725-1080P



Night Vision Side Camera 4 Pin aviation connection

TV system: AHD
Output resolution: 1080p
FPS: 25
Viewing angle: 140°(H) 80°(V)
Image device: 1/4" CMOS
Focal length: f: 2.8mm
Operating voltage: 12V DC
Dimensions: 60mm(W)
75mm(D) 50mm(H)
Mirror image selectable
Guide lines selectable
Built in Microphone



AHD CAMERAS

AHD-BR-RVC07

AHD Wing Mirror Side View Camera



Night vision
4 Pin aviation connection
Can be mounted to the wing mirror
TV system: AHD
Output resolution: 720p
FPS: 25

Viewing angle: 89°(H) 50°(V)
Image device: 1/3" CMOS
Focal length: f: 1.2mm
Operating voltage: 12V DC
Dimensions: 80mm(W) x 49mm(D)
x 63mm(H)

AHD-DOME-SM

Night Vision Side Camera



4 Pin aviation connection
TV system: AHD
Output resolution: 720p
FPS: 25
Viewing angle: 100°(H) 70°(V)
Image device: 1/3" CMOS

Focal length: f: 2.8mm
Operating voltage: 12V DC
Dimensions: 50mm(W)
68mm(D) 43mm(H)
Mirror image selectable
Guide lines selectable
Built in Microphone

AHD-CAM-676

AHD Ball Camera



AHD CAMERAS

AHD-SCAM-720-AUD-2



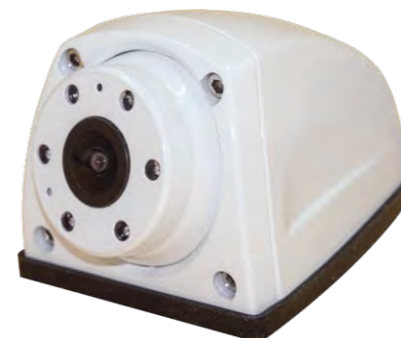
Night Vision Small Dome Camera

4 Pin aviation connection
TV system: AHD
Output resolution: 720p
FPS: 25
Viewing angle: 100°(H) 70°(V)
Image device: 1/3" CMOS
Focal length: f: 2.8mm

Operating voltage: 12V DC
Dimensions: 50mm(W)
68mm(D) 43mm(H)
Mirror image selectable
Guide lines selectable
Built in Microphone

WHITE VERSION

Night Vision Side Camera



SCAM-SPACER

Allows Cameras to be mounted further our product.
May need to be adapted for use with all cameras 25mm deep



AHD-SCAM-725

Night Vision Side Camera



4 Pin aviation connection
TV system: AHD
Output resolution: 720p
FPS: 25
Viewing angle: 130°(H) 70°(V)
Image device: 1/3" CMOS
Focal length: f: 2.8mma
Operating voltage: 12V DC

Dimensions: 60mm(W)
75mm(D) 50mm(H)
Mirror image selectable
Guide lines selectable
Built in Microphone



AHD CAMERAS

AHD-CT200-F

Window Mounted Front Facing Camera



Window Mounted Front Facing Camera
4 Pin aviation connection
Mini BMW connector to 4 Pin aviation for easier application
TV system: AHD
Output resolution: 720p

FPS: 25
Viewing angle: 110°(H) 60°(V)
Image device: 1/3" CMOS OV60
Focal length: f: 2.3mm
Operating voltage: 12V DC
Dimensions: 60mm(W) 35mm(D) 30mm(H)

AHD-FCAM-120-CL / AHD-FCAM-140-CL

Front Facing Camera



4 Pin aviation connection
Mini BMW connector to 4 Pin aviation for easier application
TV system: AHD
Output resolution: 720p
FPS: 25
AHD-FCAM-120-CL
Viewing angle: 120°(H) 60°(V)

AHD-FCAM-140-CL
Viewing angle: 140°(H) 60°(V)
Image device: 1/3" CMOS OV60
Focal length: f: 2.3mm
Operating voltage: 12V DC
Dimensions: 39mm(W) 35mm(D) 30mm(H)
Mirror image selectable via cutting green wire

CA-COVER

Camera Cover For AHD-FCAM

AHD-DOME-600TVL

AHD Dome Camera with Audio



Dome Camera
Night Vision
4 pin aviation connection
Built in Microphone for Audio
TV system: AHD
Output resolution: 720p
FPS: 25
Viewing angle: 74°(H) 58°(V) 88°(D)

Image device: 1/3" CMOS
Operating voltage: 12V DC
Dimensions: 86mmØ 58mm(H)



AHD CAMERAS

AHD-DCAM-650



Night Vision Side Camera

AHD Dome Camera with Audio
Night vision
4 Pin aviation connection
Plastic dome cover
Anti-tamper design
Built in Microphone for Audio
TV system: AHD

Output Resolution: 720p
FPS: 25
Viewing angle: 90°(H) 40°(V)
Image device: 1/3" CMOS
Focal length: f: 2.8mm
Operating voltage: 12V DC
Dimensions: 77mmØ 60mm(H)

DCAM-ANGLE

Surface Mount Adaptors for Dome Cameras
0°, 15° & 25° available

AHD-RCAM-210-AUD



Heavy Duty Rear Camera with Smart IR

4 Pin aviation connection
TV system: AHD
Output resolution: 720p
FPS: 25
Viewing angle: 89°(H) 72°(V) 103°(D)
Image device: 1/3" CMOS
Focal length: f: 2.8mm

Operating voltage: 12V DC
Dimensions: 80mm(W)
63mm(D) 70mm(H)
Mirror image
Built in Microphone

AHD-RCAM-220-SS



Wide Angle Heavy Duty Rear Camera

4 Pin aviation connection
TV system: AHD
Output resolution: 720p
FPS: 25
Viewing angle: 100°(H) 60°(V) 80°(D)
Image device: 1/3" CMOS
Focal length: f: 2.8mm
Operating voltage: 12V DC

Dimensions: 75mm(W)
55mm(D) 75mm(H)
Mirror image
AHD-RCAM-220-SS (Silver)
AHD-RCAM-220-B (Black)

AHD-RCAM-220-B

Black Version





Vehicle Specific Cameras

C-KO-SPRINTER-CCD-CAM

Mercedes Sprinter/VW Crafter Brake Light Camera



- 4 Pin aviation connection
- Adjustable Ball Camera
- Built in Microphone for Audio
- Replaces brake light
- Fixed mirror image
- TV system: NTSC / PAL
- Output resolution: 480i (NTSC) / 576i (PAL)
- FPS: 30 (NTSC) / 25 (PAL)
- Effective pixels: 752 x 582
- Viewing angle: 120°(H) 103°(V) 133°(D)
- Image device: 1/3" Sony CCD
- Focal length: f: 1.7mm



Vehicle Specific Cameras

C-KO-SPR-CAM

Mercedes Sprinter/VW Crafter Brake Light Camera



- 4 Pin aviation connection
- Adjustable Ball Camera
- Selectable guide lines via jumper plug
- Built in microphone for audio
- Replaces brake light
- Fixed mirror image

TV system: NTSC / PAL
Output resolution: 480i (NTSC) / 576i (PAL)
FPS: 30 (NTSC) / 25 (PAL)
Effective pixels: 762 x 504

Viewing angle: 130°(H) 110°(V)
Image device: CMD-III
Operating voltage: 9-16V DC
Dimensions: 350mm(W) 90mm(D) 50mm(H)

C-KO-SPR-CAM (NTSC Version)
C-KO-SPR-CAM-PAL (PAL Version)
C-KO-SPR-CAM-NM (Non Mirror Version – available)

C-KO-VITO-CAM

Mercedes Vito Brake Light Camera



- 4 Pin aviation connection
- Clips in and replaces OEM brake light
- Built brake light LEDs
- Fixed mirror image
- TV system: NTSC
- Output resolution: 480i

FPS: 30
Effective pixels: 510 x 492
Viewing angle: 110°(H) 80°(V)
Image device: 1/3" CMOS

Focal length: f: 2.8mm
Operating voltage: 12V DC
Dimensions: 491mm(W) 100mm(D) 55mm(H)

AHD-MB-SPR-PAL

Overhanging Camera



- Night vision
- 4 Pin aviation connection
- TV system: AHD
- Output resolution: 720p
- Output resolution: 480i

FPS: 25
Viewing angle: 110°(H) 100°(V)
Image device: 1/3" CMOS OV60
Focal length: f: 2.5mm

Operating voltage: 12V DC
Dimensions: 132mm(W) 220mm(D) 100mm(H)

AHD-SPR-CAM-PAL

Mercedes Sprinter/VW Crafter Brake Light Camera 2006+ (Mk2)



- 4 Pin aviation connection
- Clips in and replaces OEM brake light
- Built brake light LEDs
- Fixed mirror image
- TV system: NTSC

FPS: 25
Viewing angle: 110°(H) 100°(V)
Image device: 1/3" CMOS OV60

Operating voltage: 9-16V DC
Dimensions: 350mm(W) 100mm(D) 50mm(H)



PRODUCTS / Cameras



Vehicle Specific Cameras

C-KO-TRANSIT-CAM

Ford Transit Brake
Light Camera



- 4 Pin aviation connection
- Adjustable ball camera
- Replaces factory brake light
- Fixed mirror image
- TV system: PAL
- Output resolution: 576i

FPS: 25
Effective pixels: 976 x 596
Viewing angle: 120°(H) 100°(V)
Image device: 1/3" NVP Sony CCD
Focal length: f: 2.6mm
Operating voltage: 9-16V DC
Dimensions: 385mm(W) 130mm(D)
55mm(H)

C-KO-TCON-CAM

Ford Transit Connect
2014-2017 Brake



- Light Camera
- 4 Pin aviation connection
- Replaces factory brake light
- Fixed mirror image
- TV system: PAL

Output resolution: 576i
FPS: 25
Effective pixels: 720 x 540
Viewing angle: 120°(H) 90°(V)
Image device: 1/3" CMOS
Focal length: f: 2.8mm
Operating voltage: 12V DC
Dimensions: 400mm(W) 120mm(D)
55mm(H)

C-KO-CRAFTER-CAM

VW Crafter, Man TGE
Brake Light Camer



- 4 Pin aviation connection
- Adjustable Ball Camera
- Replaces factory brake light
- Fixed mirror image
- TV system: NTSC
- Output resolution: 480i

FPS: 30
Effective pixels: 752 x 582
Viewing angle: 120°(H) 103°(V)
133°(D)
Image device: 1/3" Sony CCD
Focal length: f: 1.7mm
Operating voltage: 12V DC
Dimensions: 64.2mm(W)
208.9mm(D) 68.7mm(H)
Camera only also available -
additional charge for brake light

C-KO-VWT-CAM

VW T5/T6 with Double Door
Brake Light Camera



- 4 Pin mini BMW to 4 Pin aviation
connection
- Clips in and replaces OEM brake light
- Fixed mirror image
- TV system: PAL
- Output resolution: 576i

FPS: 25
Effective pixels: 500 x 582
Viewing angle: 110°(H) 80°(V)
Image device: 1/3" CMOS
Focal length: f: 2.8mm
Operating voltage: 12V DC
Dimensions: 188mm(W) 60mm(D)
60mm(H)

C-KO-TC-CAM-LED

Ford Transit Custom
Brake Light Camera



- Ford Transit Custom Brake
Light Camera
LED Version

Adjustable camera ball
Night vision
4 Pin aviation connection
Clips in and replaces OEM
brake light
Fixed mirror image
TV system: PAL / NTSC
Output resolution: 576i (PAL) / 480i
(NTSC)
FPS: 25 (PAL) / 30 (NTSC)

BULB VERSION



- Bulb Version

Effective pixels: 500 x 582
Viewing angle: 82°(H) 79°(V) 99°(D)
Image device: 1/4" CMOS
Focal length: f: 2mm
Operating voltage: 12V DC
Dimensions: 264mm(W) 120mm(D)
68mm(H)

C-KO-TC-CAM (Bulb Version)
C-KO-TC-CAM-LED (LED Version)
C-KO-TC-CAM-NTSC-L (LED NTSC Version)

C-KO-VWC-CAM

VW Caddy
Brake Light Camera



- Clips in and replaces OEM brake light
- Fixed mirror image
- TV system: PAL
- Output resolution: 576i

FPS: 25
Effective pixels: 720 x 540
Viewing angle: 110°(H) 90°(V)
Image device: 1/3" CMOS
Focal length: f: 2.8mm
Operating voltage: 12V DC
Dimensions: 175mm(W) 39mm(D)
65mm(H)

C-KO-EXP-CAM

Peugeot Expert, Citroen
Dispatch & Toyota ProAce 2016+
Vauxhall Vivaro 2020+



- 4 Pin aviation connection
- TV system: NTSC FPS: 30
- Output resolution: 480i

Effective pixels: 510 x 492
Viewing angle: 110°(H) 80°(V)
Image device: 1/3" CMOS7959
Focal length: f: 2.8mm
Operating voltage: 12V DC
Dimensions: 260mm(W) 40mm(D)
33mm(H)



PRODUCTS / Cameras



Vehicle Specific Cameras

C-KO-FPC-CAM

Fiat Ducato, Peugeot Boxer, Citroen Relay Brake Light Camera



- 4 Pin aviation connection
- Adjustable ball camera with night vision
- Selectable guide lines via jumper plug
- Built in microphone for audio
- Built in red LED brake light
- Fixed mirror image
- TV system: NTSC / PAL

Output resolution: 480i (NTSC) 568i (PAL)
FPS: 30 (NTSC) / 25 (PAL)
Effective pixels: 762 x 504

Viewing angle: 130°(H) 110°(V)
Image device: CMD-III
Operating voltage: 9-16V DC
Dimensions: 270mm(W) 80mm(D) 57mm(H)

C-KO-FPC-CAM (NTSC Version)
C-KO-FPC-CAM-PAL (PAL Version)

C-KO-VR-CAM

Vauxhall 2014-2019 Vivaro, Renault 2014+Traffic Brake Light Camera



- Adjustable camera ball
- Night vision
- 4 Pin aviation connection
- Clips in and replaces OEM brake light
- Built in brake light LEDs
- Fixed mirror image
- TV system: PAL / NTSC

Output resolution: 576i (PAL) / 480i (NTSC)
FPS: 25 (PAL) / 30 (NTSC)
Effective pixels: 500 x 582
Viewing angle: 82°(H) 79°(V) 99°(D)

Image device: 1/4" CMOS
Focal length: f: 2mm
Operating voltage: 12V DC
Dimensions: 232mm(W) 160mm(D) 80mm(H)

C-KO-VR-CAM (PAL Version)
C-KO-VR-CAM-NTSC (NTSC Version)

C-KO-NRV-CAM

Renault Master, Nissan NV400, Vauxhall Movano Brake Light Camera



- 4 Pin aviation connection
- Night vision
- Fixed mirror image
- TV system: PAL / NTSC
- Output resolution: 576i (PAL) / 480i (NTSC)
- FPS: 25 (PAL) / 30 (NTSC)

Effective pixels: 648 x 488
Viewing angle: 89°(H) 72°(V) 103°(D)
Image device: 1/3" CMOS7959
Focal length: f: 2.8mm

Operating voltage: 9-16V DC
Dimensions: 197mm(W) 109mm(D) 126mm(H)

C-KO-NRV-CAM (PAL Version)
C-KO-NRV-CAM-NTSC (NTSC Version)

C-KO-VV-CAM

Vauxhall Vivaro, Renault Traffic Brake Light Camera upto 2014



- Night vision
- 4 Pin aviation connection
- Clips in and replaces OEM brake light
- Built in brake light LEDs
- Fixed mirror image
- TV system: NTSC

Output resolution: 480i
FPS: 30
Effective pixels: 500 x 582
Viewing angle: 120°(H) 90°(V) 110°(D)

Image device: 1/4" CMOS
Focal length: f: 2mm
Operating voltage: 12V DC
Dimensions: 140mm(W) 85mm(D) 55mm(H)



PRODUCTS / Cameras



Vehicle Specific Cameras



CA-9935

Number Plate Light Camera for Viano & Vito



- RCA video connection
- Guide lines selectable via joining green wires
- Original bulb fits into housing, power lead with relay
- TV system: NTSC FPS: 30
- Output resolution: 480i
- Effective pixels: 668 x 576
- Viewing angle: 120°(H) 110°(V)
- Image device: 1/3" CMOS OV60 Focal length: f: 2.1mm
- Operating voltage: 12V DC
- Dimensions: 76mm(W) 26mm(D) 35mm(H)

CA-9922

Number Plate Light Camera for Transit



- RCA video connection
- Guide lines selectable by joining green wires
- Built in LED light
- TV system: PAL FPS: 25
- Output resolution: 576i
- Effective pixels: 668 x 576
- Viewing angle: 120°(H) 110°(V)
- Image device: 1/3" CMOS OV60 Focal length: f: 2.1mm
- Operating voltage: 12V DC
- Dimensions: 60mm(W) 31mm(D) 30mm(H)

CA-9801

Most Audi & VW



CA-9801DY

Audi A4 2017



CA-9801-EY

Audi A5 2017, Q2 & Skoda Kodiaq



- Handle Bar Camera
- Various Vehicle Applications
- RCA video connection
- Guide lines selectable via joining green wires
- Built in switch for tailgate
- Fixed mirror image
- TV system: NTSC
- Output resolution: 480i
- FPS: 30

- Effective pixels: 668 x 576
- Viewing angle: 120°(H) 110°(V)
- Image device: 1/3" CMOS OV60
- Focal length: f: 2.1mm
- Operating voltage: 12V DC

CA-9801 110mm(W) 48mm(D) 23mm(H)
CA-9801DY 110mm(W) 48mm(D) 30mm(H)
CA-9801-EY 110mm(W) 44mm(D) 28mm(H)



PRODUCTS / D1 Cameras

CA-MB-SPR-CCD

Overhanging Camera Night vision



4 Pin aviation connection
Roof Mounted Camera
Fixed mirror image
TV system: NTSC / PAL
Output resolution: 480i / 576i
FPS: 30 (NTSC) / 25 (PAL)
Effective pixels: 720 x 480
Viewing angle: 85°(H) 60°(V)

Image device: 1/3" Sony CCD
Focal length: f: 2.1mm
Operating voltage: 12V DC
Dimensions: 132mm(W) 220mm(D)
100mm(H)

CA-MB-SPR-CCD-N (NTSC Version)
CA-MB-SPR-CCD-P (PAL Version)

C-KO-UNI-CAM

Universal Brake Light Camera



4 Pin aviation connection
Universal brake light built in LED red
light
Adjustable Ball Camera
Fixed mirror image
TV system: PAL
Output resolution: 576i

FPS: 25
Effective pixels: 500 x 582
Viewing angle: 82°(H) 79°(V) 99°(D)
Image device: 1/3" CMOS
Focal length: f: 2mm
Operating voltage: 12V DC
Dimensions: 125mm(W) 110mm(D) 95mm(H)

C-KO-UNI-CAM-LED

Universal Brake Light Camera with Built in Door Light



4 Pin aviation connection
Universal brake light built in LED red
light
15W Door / Work light
Adjustable ball camera
Fixed mirror image
TV system: PAL
Output resolution: 576i

FPS: 25
Effective pixels: 500 x 582
Viewing angle: 82°(H) 79°(V) 99°(D)
Image device: 1/3" CMOS
Focal length: f: 2mm
Operating voltage: 12V DC
Dimensions: 125mm(W) 110mm(D) 95mm(H)



D1 CAMERAS

RCAM-0-087-CAM



Heavy Duty Body Mount Camera

Heavy Duty Body Mount Camera
Night vision Smart IR
4 Pin aviation connection
Built in Microphone for Audio
Mirror image selectable via screw
on camera rear
TV system: PAL
Output resolution: 576i

FPS: 25
Effective pixels: 960 x 576
Viewing angle: 80°(H) 60°(V)
Image device:
1/3" CMOS PC1058K
Operating voltage: 12V DC
Dimensions: 90mm(W)
62mm(D) 68mm(H)

RCAM-0-087-CAM-W

White Version

DF-8084



Heavy Duty Body Mount Camera

Night vision Smart IR
4 Pin aviation connection
Built in Microphone for Audio
Fixed mirror image
TV system: PAL
Output resolution: 576i
FPS: 25

Effective pixels: 976 x 582
Viewing angle: 89°(H) 62°(V)
Image device: 1/4" CMOS
Focal length: f: 2.8mm
Operating voltage: 12V
Dimensions: 60mm(W) 53mm(D)
60mm(H)
White also available

CK-15-CAM



Heavy Duty Body Mount Camera

Night vision
4 Pin aviation connection
Fixed mirror image
TV system: PAL
Output resolution: 576i
FPS: 25
Effective pixels: 752 x 582

Viewing angle: 80°(H) 60°(V)
Image device: 1/3" Sharp CMOS
Focal length: f: 2.9mm
Operating voltage: 12V / 24V DC
Dimensions: 80mm(W) 63mm(D)
70mm(H)



PRODUCTS / D1 Cameras

C-KO-BR-RVC07

Wing Mirror Side View Camera



Night vision
4 Pin aviation connection
Can be mounted to the wing mirror
TV system: PAL
Output resolution: 576i
FPS: 25

Effective pixels: 500 x 582
Viewing angle: 89°(H) 70°(V)
Image device: 1/3" CMOS
Focal length: f: 2.8mm
Operating voltage: 12V DC
Dimensions: 80mm(W) 49mm(D) 63mm(H)

C-KO-RCAM-220

Wide Angle Heavy Duty Rear



Camera
4 Pin aviation connection
TV system: PAL
Output resolution: 576i
FPS: 25
Viewing angle:
100°(H) 60°(V) 80°(D)
Image device: 1/3" CMOS

Focal length: f: 2.8mm
Operating voltage: 12V DC
Dimensions: 75mm(W)
55mm(D) 75mm(H)
Mirror image

C-KO-RCAM-220-SS (Silver)
C-KO-RCAM-220-B (Black)

C-KO-RCAM-220-B

Black Version

CAM-DOME-600TVL

Dome Camera with Audio



Dome Camera with Audio
Night vision
4 Pin aviation connection
Built in Microphone for Audio
Anti-tamper design
TV system: PAL
Output resolution: 576i

FPS: 25
Effective pixels: 704 X 576
Viewing angle: 60°(H) 30°(V)
Image device: 1/3" CMOS
Operating voltage: 12V DC
Dimensions: 86mmØ 58mm(H)



D1 CAMERAS

CAM-DOME-650-SN

Wing Mirror Side View Camera



Dome Camera
4 Pin aviation connection
Plastic Dome Cover
Anti-tamper design
Separate 25Ø base
Mirror image selectable
by cutting white wire
TV system: PAL

Output resolution: 576i
FPS: 25
Effective pixels: 752 x 582
Viewing angle: 110°(H) 75°(V)
Image device: 1/3" Sony CCD
Focal length: f: 2.1mm
Operating voltage: 12V DC
Dimensions: 66mmØ 49mm(H)

DCAM-ANGLE

Surface Mount Adaptors
for Dome Cameras
0°, 15° available

C-KO-CAM-410

Side View Camera with Audio



Side View Camera with Audio
Night vision
4 Pin aviation connection
Built in Microphone for Audio
Mirror image selectable via
jumper plug
TV system: PAL
Output resolution: 576i
FPS: 25

Effective pixels: 728 x 488
Viewing angle: 105°(H) 72°(V)
Image device: 1/3" CMOS
PC1089
Operating voltage: 12V DC
Dimensions: 57mm(W)
75mm(D) 43mm(H)
Available Black or White

C-KO-CAM-410-WHITE

White Version



SCAM-SPACER





PRODUCTS / D1 Cameras

CA-9406-PAL



Night Vision Bumper Camera

4 Pin aviation connection
Mini BMW connector to
4 Pin aviation
Mirror image selectable
TV system: PAL
Output resolution: 576i
FPS: 25
Effective pixels: 976 x 582

Viewing angle: 120°(H) 100°(V)
Image device: 1/3" CMOS
Focal length: f: 2.3mm
Operating voltage: 12V DC
Dimensions: 31mm(W) 40mm(D) 31mm(H)

CA-9770-PAL



Dual Camera

RCA connection
Mirror image
Built in microphone
TV system: PAL
Output resolution: 576i
FPS: 25
Effective pixels: 960 x 576
Viewing angle: 75°(H)

Image device: 1/3"
CMOS PC1058K
Operating voltage: 12V DC
Dimensions: 110mm(W)
70mm(D) 80mm(H)
AHD Version available
Black version also available.

CAB-DUAL-4PIN

Cable Available



CA-9320-800



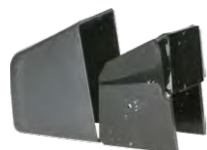
800TVL Front Camera

4 Pin aviation connection
Mirror image selectable
via cutting green wire
Mini BMW connector
to 4 Pin aviation
TV system: PAL
Output resolution: 576i
FPS: 25

Effective pixels: 976 x 582
Viewing angle: 110°(H) 80°(V)
Image device: 1/3" SONY CCD
Focal length: f: 2.3mm
Operating voltage: 12V DC
Dimensions:
39mm(W) 35mm(D) 30mm(H)

CA-COVER

Camera Cover for CA-9320-800
Mounts onto windscreen
to prevent driver interference



D1 CAMERAS

CA-9401



Wedge Camera

RCA video connection
Guide lines selectable
via joining green wires
Fixed mirror image
TV system: NTSC
Output resolution: 480i
FPS: 30
Effective pixels: 668 x 576

Viewing angle: 120°(H) 110°(V)
Image device: 1/3" CMOS OV60
Focal length: f: 2.1mm
Operating voltage: 12V DC
Dimensions:
30mm(W) 34mm(D) 37mm(H)

CA-5410-IR



Number Plate Camera with Surround

4 Pin aviation connection
Mirror image
Guide lines selectable
TV system: PAL or NTSC
Output resolution:
576i/ 480i (NTSC)
FPS: 25 / 30 (NTSC)
Effective pixels: 648 x 488
Viewing angle: 120°(H)

Image device: 1/3" CMOS
Focal length: f: 2.1mm
Operating voltage: 12V DC
Dimensions:
527mm(W) 37mm(D) 125mm(H)

COL185-SCR-MK2



Multi Mount Micro Camera

Butterfly / Push Fit mount camera
Adaptor to side mount camera
4 Pin aviation connection
Mirror image selectable
by cutting white wire
Guide lines selectable
by cutting green wire
TV system: PAL
Output resolution: 576i
FPS: 25

Effective pixels: 720 x 540
Viewing angle: 110°(H) 90°(V)
Image device: 1/3" CMOS
Focal length: f: 2.1mm
Operating voltage: 12V DC
Dimensions:
37mm(W) 30mm(D) 27mm(H)

BUTTERFLY MOUNT



D1 CAMERAS

LED-WLCAM

Work Light with Built in Camera



24W Flood
8 x LED Work Light
4 Pin aviation connection
TV system: PAL
Output resolution: 576i
FPS: 25
Effective pixels: 976 x 592
Viewing angle: 110°(H) 90°(V)
Image device: 1/3" CMOS
Focal length: f: 2.1mm
Operating voltage: 12V / 24V DC
Dimensions: 114mm(W) 51mm(D) 150mm(H)



D1 Cameras



COL-M90

Metal Wedge Camera



Can be mounted horizontal or vertical
RCA video connection
Mini BMW connector to RCA video
Guide lines selected via green cutting lead
Selectable mirror image
TV system: NTSC (COL-M90-N-B) / PAL (COL-M90-P-B)
Output resolution: 480i (NTSC) 576i (PAL)
FPS: 30 (NTSC) 25 (PAL)
Effective pixels: 720 x 540
Viewing angle: 110°(H) 100°(V)
Image device: 1/2" CMOS II
Focal length: f: 1.2mm
Operating voltage: 12V DC
Dimensions: 32mm(W) 34mm(D) 24mm(H)

COL-M90-N-B (NTSC Version)
COL-M90-P-B (PAL Version)

COL-M90-WHITE

Metal Wedge Camera



RCA video connection
Mini BMW connector to RCA video
Guide lines selected via green cutting lead
Fixed mirror image
TV system: NTSC (COL-M90-N-W) / PAL (COL-M90-P-W)
Output resolution: 480i (NTSC) 576i (PAL)
FPS: 30 (NTSC) 25 (PAL)
Effective pixels: 720 x 540
Viewing angle: 110°(H) 100°(V)
Image device: 1/2" CMOS II
Focal length: f: 1.2mm
Operating voltage: 12V DC
Dimensions: 32mm(W) 34mm(D) 24mm(H)

COL-M90-P-W (PAL Version)



CATEGORY 5



Digital Wireless
Camera Kit
Heavy Duty Rear
Camera



CAMERAS / Digital Wireless



WTX-439 / WRX-098

Wireless Transmitter
and Receiver

DWKIT-72S

Digital Wireless Camera Kit



DWCAM-2S

Wireless Digital Camera
Additional Camera

4 Pin aviation connection
TV system: PAL
Output resolution: 576i
Line of sight range: 120m
Output power: 20dBm
RF bit rate: 4Mbps

Spread spectrum: 2400 - 2483.5
MHz
Latency: 120ms
Transmission frequency: 2.4GHz
Operating voltage: 12V / 24V DC
Monitor dimensions: 105mm(W)
110mm(D) 25mm(H)

Heavy Duty Rear Camera
Night Vision
Built in Wireless Transmitter
Fixed mirror image
Camera Dimensions: 80mm(W)
63mm(D) 70mm(H)
7" Digital TFT LCD
Wireless receiver built into monitor

Delay timer for trigger set on screen
OSD guide lines
Can mirror cameras on screen
Built in sun shade
Can take 2 cameras
Operating voltage: 12V / 24V DC
Monitor Dimensions: 172mm(W)
45mm(D) 115mm(H)

DW-ANT-CAM

DW-ANT-FLAT

DW-PACK



Replacement Antenna for Digital Camera

Available from stock in instances of
theft or damage

Flat Style Antenna

Alternative antenna for digital wireless
cameras and monitors
Useful in instances when reception is blocked
and requires improving

Battery Pack for Wireless Cameras

Rechargeable Power Pack
Charges via Mini USB
Magnetic Base
2.5mm DC connector to power camera



CAMERA KITS

AHD-CKIT-1080P

7" 1080p AHD Camera Kit



Heavy Duty Rear Camera
Night Vision with Smart IR
4 Pin aviation connection
Camera Dimensions: 80mm(W)
63mm(D) 70mm(H)
20m Camera lead
7" AHD Digital TFT LCD

Powers cameras 12V DC
Can mirror cameras on screen
2 Inputs
1 Trigger
Operating voltage: 12V / 24V DC
Monitor Dimensions:
192mm(W) 32mm(D) 134mm(H)

AHD-CK-01

7" AHD Rear Camera Kit



7" Digital panel
AHD / PAL / NTSC
compatible
3 x 4 Pin aviation inputs
3 Trigger

AHD-CK-02

7" AHD Rear & Side Camera Kit



7" Digital panel
AHD / PAL / NTSC
compatible
3 x 4 Pin aviation inputs
3 Trigger



CAMERAS KITS

CK-05-B

5.6" Camera Kit



Heavy Duty Body Mount Camera
Night Vision with Smart IR
4 Pin aviation connection
Built in Microphone for Audio
Mirror image selectable via screw
on camera rear
Camera Dimensions:
80mm(W) 63mm(D) 70mm(H)
5" Digital TFT LCD
Left and right trigger

with timer delay
Powers cameras 12V DC
Can mirror cameras on screen
Detachable sun shade
Built in speaker
3 x 4 Pin aviation inputs
3 Triggers
Operating voltage: 12V / 24V DC
Monitor Dimensions:
146mm(W) 31mm(D) 136mm(H)

CK-03-B

7" Camera Kit



Heavy Duty Body Mount
Camera
Night Vision with Smart IR
4 Pin aviation connection
Built in Microphone for Audio
Mirror image selectable via
screw on camera rear
Camera Dimensions:
80mm(W) 63mm(D) 70mm(H)
7" Digital TFT LCD
Delay timer for trigger set on

screen
Powers cameras 12V DC
Can mirror cameras on screen
Built in sun shade
Built in speaker
2 x 4 Pin aviation inputs
1 Trigger
Operating voltage: 12V / 24V DC
Monitor Dimensions:
172mm(W) 45mm(D) 115mm(H)

CK-15-B

7" Camera Kit



Heavy Duty Rear Camera
Night Vision
4 Pin aviation connection
Fixed mirror image
Camera Dimensions:
80mm(W) 63mm(D) 70mm(H)
7" Digital TFT LCD
Delay timer for trigger
set on screen
Reverse trigger priority

set on screen
Powers cameras 12V DC
Can mirror cameras on screen
2 x 4 Pin aviation inputs
2 Triggers
Operating voltage: 12V / 24V DC
Monitor Dimensions:
195mm(W) 27mm(D) 128mm(H)



MONITORS

QSM Monitors 7" Quad Dash Mount Monitor



7" Digital panel
4 x 4 Pin aviation inputs
4 Triggers
Resolution: 1024 x 600
Contrast ratio: 500:1
Aspect ratio: 16:9
Brightness: 400cd/m²
Viewing angle: U: 50° D:70° R/L 70°/70°

Operating voltage: 12V / 24V DC
Dimensions: 192mm(W) 32mm(D) 134mm(H)
Monitor can power cameras
Shows up to 4 images on the screen at the same time
Each camera displayed on screen when triggered
QSM-MON-C10 PAL / NTSC compatible for D1 Cameras
QSM-AHD-C14 for AHD Cameras

CH1	CH2	CH3	CH4	CH1	CH4
CH3	CH4			CH2	
CH1	CH2	CH3	CH1	CH3	CH1
			CH2	CH2	CH4



MONITORS

AHD-MON-C13

7" AHD Dash Mount Monitor



7" Digital panel
AHD / PAL / NTSC compatible
3 x 4 Pin aviation inputs
3 Trigger

Resolution: 1024 x 600
Contrast ratio: 500:1
Aspect ratio: 16:9
Brightness: 400cd/m²
Viewing angle: U: 50° D:70° R/L 70°/70°

Operating voltage: 12V / 24V DC
Dimensions: 180mm(W) 23mm(D) 120mm(H)
Monitor can power cameras

AHD-MON-C90

9" AHD Dash Mount Monitor



9" Digital panel
AHD / PAL / NTSC compatible

2 x 4 Pin aviation inputs
1 Trigger
Resolution: 1024 x 600
Contrast ratio: 500:1
Aspect ratio: 16:9
Brightness: 400cd/m²
Viewing angle:

U: 50° D:70° R/L 70°/70°
Operating voltage: 12V DC
Dimensions: 192mm(W) 32mm(D) 134mm(H)
Monitor can power cameras

AHD-MON-1080P

7" AHD 1080p Dash Mount Monitor



7" Digital panel
AHD / PAL / NTSC compatible

2 x 4 Pin aviation inputs
1 Trigger
Resolution: 1024 x 600
Contrast ratio: 500:1
Aspect ratio: 16:9
Brightness: 400cd/m²
Viewing angle:

U: 50° D:70° R/L 70°/70°
Operating voltage: 12V / 24V DC
Dimensions: 192mm(W) 32mm(D) 134mm(H)
Monitor can power cameras

VGA-MON-D10

7" Dash Mount Monitor with VGA Input



7" Digital panel
PAL / NTSC compatible
2 x 4 Pin aviation inputs
1 VGA Input
1 Trigger

Resolution: 1024 x 600
Contrast ratio: 500:1
Aspect ratio: 16:9
Brightness: 400cd/m²
Viewing angle: U: 50° D:70° R/L 70°/70°

Operating voltage: 12V / 24V DC
Dimensions: 192mm(W) 32mm(D) 134mm(H)
Monitor can power cameras



MONITORS

C-KO-MON-7HDMI

7" HDMI Monitor



7" Digital panel
PAL / NTSC compatible
Guidelines & mirror selectable
2 x RCA input
1 x HDMI input
1 Trigger
Resolution: 800 x 480
Contrast ratio: 500:1
Aspect ratio: 16:9
Brightness: 400cd/m²
Viewing angle: U: 50° D:70° R/L 70°/70°
Operating voltage: 12V / 24V DC
Dimensions: 180mm(W) 23mm(D) 120mm(H)



C-KO-MON-5HDMI

5" HDMI Monitor



5" Digital panel
PAL / NTSC compatible
Guidelines & mirror selectable
2 x RCA input
1 x HDMI input
1 Trigger
Resolution: 800 x 480
Contrast ratio: 500:1
Aspect ratio: 16:9
Brightness: 400cd/m²
Viewing angle: U: 50° D:70° R/L 70°/70°
Operating voltage: 12V / 24V DC
Dimensions: 147mm(W) 30mm(D) 110mm(H)



MONITORS / Mirror Monitors

TD-03



4.3" Mirror Monitor with Stalk

Universal mount
Built in Ambient Light Sensor
4.3" Digital panel
PAL / NTSC compatible
2 x RCA video inputs
1 Trigger
Resolution: 480 x 272
Contrast ratio: 300:1

Aspect ratio: 16:9
Brightness: 250cd/m²
Viewing angle: U: 50° D:70° R/L 70°/70°
Operating voltage: 12V DC
Dimensions: 270mm(W) 44mm(D) 80mm(H)



VW-2



FORD-COVER



FORD



TC



VW



Other options available on request



TD-04

4.3" Mirror Monitor with Stalk



New rimless design
Universal mount
Built in Ambient Light Sensor
4.3" Digital panel
PAL / NTSC compatible
2 x RCA video inputs
1 Trigger
Resolution: 480 x 272
Contrast ratio: 300:1
Aspect ratio: 16:9
Brightness: 250cd/m²
Viewing angle: U: 50° D:70° R/L 70°/70°
Operating voltage: 12V DC
Dimensions: 270mm(W) 44mm(D) 80mm(H)





PRODUCTS / Monitors

PV-YW795

7" Dash Mount Monitor



7" Digital panel
PAL / NTSC compatible
2 x 4 Pin aviation inputs
2 Triggers
Resolution: 800 x 480
Contrast ratio: 500:1

Aspect ratio: 16:9
Brightness: 400cd/m²
Viewing angle: U: 50° D:70° R/L 70°/70°
Operating voltage: 12V / 24V DC

Dimensions: 180mm(W) 23mm(D)
120mm(H)
Monitor can power cameras
Audio on CH2

PV-YW-568

5.6" Dash Mount Monitor



5.6" Digital panel
PAL / NTSC compatible
2 x 4 Pin aviation inputs
1 Trigger
Resolution: 320 x 234
Contrast ratio: 500:1

Aspect ratio: 4:3
Brightness: 400cd/m²
Viewing angle: U: 50° D:70° R/L 70°/70°
Operating voltage: 12V / 24V DC

Dimensions: 146mm(W) 28mm(D)
110mm(H)
Monitor can power cameras
Audio on CH2

PV-YW-7WP

7" Waterproof Monitor



7" Digital panel
PAL / NTSC compatible
Guidelines & mirror selectable
3 x 4 Pin aviation input
2 Triggers

Resolution: 800 x 480
Contrast ratio: 450:1
Aspect ratio: 16:9
Brightness: 400cd/m²
Viewing angle: U: 50° D:70° R/L 70°/70°

Operating voltage: 12V / 24V DC
Dimensions: 188mm(W) 32.5mm(D)
140mm(H)

CK-15-MON

7" Dash Mount Monitor



7" Digital panel
PAL / NTSC compatible
2 x 4 Pin aviation inputs
2 Triggers
Resolution: 800 x 480
Contrast ratio: 500:1

Aspect ratio: 16:9
Brightness: 400cd/m²
Viewing angle: U: 50° D:70° R/L 70°/70°
Operating voltage: 12V / 24V DC

Dimensions: 195mm(W) 27mm(D)
128mm(H)
Monitor can power cameras

PV-YW501

5" Monitor



5" Digital panel
PAL / NTSC compatible
2 x RCA inputs
Trigger by video signal
Resolution: 1200 x 680
Contrast ratio: 350:1

Aspect ratio: 16:9
Brightness: 400cd/m²
Viewing angle: U: 50° D:70° R/L 70°/70°

Operating voltage: 12V DC
Dimensions: 125mm(W) 40mm(D)
95mm(H)

MONITORS

C-KO-MIR-5C

5" Mirror Monitor Clip On



Rear of Product



5" Digital panel
PAL / NTSC compatible
2 x RCA video inputs
Switches with video signal
Resolution: 480 x 272
Contrast ratio: 300:1

Aspect ratio: 16:9
Brightness: 500cd/m²
Viewing angle: U: 50° D:70° R/L 70°/70°
Operating voltage: 12V DC
Dimensions: 276mm(W)
25mm(D) 97mm(H)

TC-06

4.3" Mirror Monitor Clip On



Rear of Product



4.3" Digital panel
PAL / NTSC compatible
2 x RCA video inputs
1 Trigger
Resolution: 480 x 272
Contrast ratio: 300:1

Aspect ratio: 16:9
Brightness: 250cd/m²
Viewing angle: U: 50° D:70° R/L 70°/70°
Operating voltage: 12V DC
Dimensions: 276mm(W)
30mm(D) 39mm(H)

C-KO-7MM

7" Mirror Monitor Clip On



Rear of Product



7" Digital panel
PAL / NTSC compatible
2 x RCA video inputs
1 Trigger
Resolution: 800 x 480
Contrast ratio: 300:1

Aspect ratio: 16:9
Brightness: 250cd/m²
Viewing angle: U: 50° D:70° R/L 70°/70°
Operating voltage: 12V DC
Dimensions: 250mm(W)
21mm(D) 109mm(H)

MONITORS / Mirror Monitors

C-KO-MIR-5S

5" Mirror Monitor with Universal Stalk



Universal Stalk Included



Rear of Product

5" Digital panel
PAL / NTSC compatible
2 x RCA video inputs
Switches with video signal
Resolution: 480 x 272
Contrast ratio: 300:1

Aspect ratio: 16:9
Brightness: 500cd/m²
Viewing angle: U: 50° D:70° R/L 70°/70°
Operating voltage: 12V DC
Dimensions:
276mm(W) 25mm(D) 97mm(H)

TC-05

4.3" Mirror Monitor with Universal Stalk



Universal Stalk Included



Rear of Product

4.3" Digital panel
PAL / NTSC compatible
2 x RCA video inputs
1 Trigger
Resolution: 480 x 272
Contrast ratio: 300:1

Aspect ratio: 16:9
Brightness: 250cd/m²
Viewing angle: U: 50° D:70° R/L 70°/70°
Operating voltage: 12V DC
Dimensions:
276mm(W) 30mm(D) 39mm(H)

C-KO-75M-STALK

Mirror Monitor with Universal Stalk



Universal Stalk Included



Rear of Product

7" Digital panel
PAL / NTSC compatible
2 x RCA video inputs
1 Trigger
Resolution: 800 x 480
Contrast ratio: 300:1

Aspect ratio: 16:9
Brightness: 250cd/m²
Viewing angle: U: 50° D:70° R/L 70°/70°
Operating voltage: 12V DC
Dimensions:
250mm(W) 21mm(D) 109mm(H)



MONITORS / Mirror Monitors

STALK#1



For use with
TC-05,
C-KO-MIR-5S,
C-KO-75M-STALK



MONITORS / Mirror Monitors

STALK#3



For use with
TC-05,
C-KO-MIR-5S,
C-KO-75M-STALK



STALK#2



For use with
TC-05,
C-KO-MIR-5S,
C-KO-75M-STALK



STALK#12



For use with
TC-05,
C-KO-MIR-5S,
C-KO-75M-STALK



STALK#7



For use with
TC-05,
C-KO-MIR-5S,
C-KO-75M-STALK



STALK#42



For use with
TC-05,
C-KO-MIR-5S,
C-KO-75M-STALK



STALK#35



For use with
TC-05,
C-KO-MIR-5S,
C-KO-75M-STALK



LOCAA319-0.5



Rear View Mirror Bonder
0.5ml
Suitable for glass and metal only

360° VISION/

360° 'BIRDS-EYE-VIEW'

The new 360° 'Birds-Eye-View' camera system from CKO utilises 4 cameras, 1 on each side of the vehicle to provide a top down view of the entire vehicle. All the cameras include ultra-wide-angle lenses, so their field of vision overlap at the corners of the vehicle. An ECU (Electronic Control Unit) is used to blend the 4 images together to produce the look-down view and a 'vehicle mask', which looks like the vehicle, is used to cover the void that's behind the cameras (the vehicle).

Once fitted, the system will require calibrating (simply transfer a file to CKO). Calibration ensures the correct view is configured for that vehicle. The system can be used with any type and size of vehicle.



360° 'BIRDS-EYE-VIEW' Camera System

7" Monitor

ECU

Remote Control

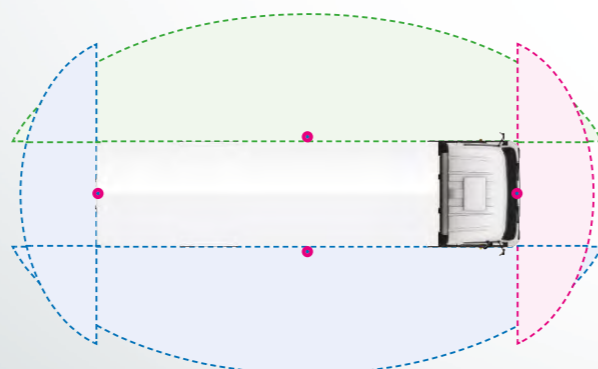
Upgrade Options:

Digital Video Recorder

Waterproof Monitor (ideal for Plant use)

Side Sensors

Turning Warning Alarm



360° VISION /OMNI-VUE

360° 'BIRDS-EYE-VIEW'

Once fitted, the system will require calibrating (simply transfer a file to CKO). Calibration ensures the correct view is configured for that vehicle. The system can be used with any type and size of vehicle. The 'birds-eye-view' is always displayed on the monitors primary view and the second view can automatically switch depending on the manoeuvre being carried out by the vehicle (if the correct wiring configuration exists). Whilst it is recommended to use a separate monitor for the 360° system, it is also possible to utilise the vehicles existing monitor (vehicle specific leads available on request). The system will 'plug-and-play' connect into a DVR to allow the recording of images from all cameras. Ideal for training purposes and for protecting drivers against false insurance claims.

All cables and accessories provided

Remote configuration by experienced programmers with pre-sets for optimal birds-eye view

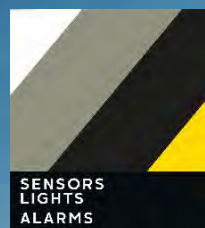
Eliminates blind spots

Best option in urban environment for safety

Auto-switches when turning and reversing to the specific camera



The standard system, includes the following components:
4 ultra-wide-angle cameras (metal case, easy fit) and cables
(1x18m, 2x10m & 1x5m)



CATEGORY 6



4 Sensor Side Proximity Sensor System



SIDE PROXIMITY SENSORS

C-KO-ULTRASCAN-04



4 Sensor Side Proximity Sensor System with GPS Speed Detection

Audible and visual traffic light display warning
Detection range: 0 – 200cm (selectable via dip switches)
GPS Built in off above 20Kph
Brake input
Sleep secure function
Operating voltage: 9V – 32V DC



C-KO-ULTRASCAN-EXT

Sensor Cable Extenders for C-KO-ULTRASCAN Systems

Available in 3M

C-KO-ULTRASCAN-06



6 Sensor Side Proximity Sensor System with GPS Speed Detection

Audible and visual traffic light display warning
Detection range: 0 – 200cm
GPS Built in off above 20Kph
Brake input
Sleep secure function
Operating voltage: 9V – 32V DC



C-KO-ULTRASCAN-EXT

Sensor Cable Extenders for C-KO-ULTRASCAN Systems

Available in 1M, 2M & 4M



LCV PARKING SENSORS

RS-2-22-RM-A



2 Head Rubberised Parking Sensors for Metal Bumpers

Push fit rubber heads
Number of heads: 2
Sensor hole size: 22Ømm
Length of cable 3m
at the furthest sensor
Detection range: 1.5m to 0.3m
Sensitivity adjustment
Operating voltage: 12V DC
20° Angled heads

RS-4-22-RM-A



4 Head Rubberised Parking Sensors for Metal Bumpers

Push fit rubber heads
Number of heads: 4
Sensor hole size: 22Ømm
Length of cable 3m
at the furthest sensor
Detection range: 1.5m to 0.3m
Sensitivity adjustment
Operating voltage: 12V DC
20° Angled heads

RS-4-22/26-RBM-B



Multipurpose 22mm Sensors with Adaptor to 26mm

4 x 22mm sensor heads
4 x 26mm sensor rings for metal
bumpers
22mm & 26mm hole cutters
Buzzer included
Heads on 11cm lead
2.5m Extension lead to box
Operating voltage: 12V DC
Brain 75 x 54 x 25 mm
Detection range: 150cm / 85cm



PASSENGER CAR SENSORS

RS-4-18-R-I



18mm Parking Sensors

Audible Buzzer sounds
automatically when reversing
Intelligent ECU - detects tow bars,
bikes and wheel covers
4 x Sensor Heads
18.8mm Hole Cutter
Sensitivity adjustment
Operating voltage: 12V DC

Includes angle rings
Paintable sensors
Waterproof connectors detach from
sensor heads

RS-PRO-OES



Advanced Intelligence Dynamic Detection Parking Sensors

Self-Learning of Sensor Positioning
PC & Android Programmable
(with additional adaptor)
Compatible with CAN-Bus vehicles
Compatible with vehicles with LED
Self-Diagnosis 'fault finding'
Sensitivity and Detection
adjustment by Dip Switches
Operating voltage: 12V DC

Provided with 3, 6 & 12-degree angled
adaptors
Flush Fitting adaptor included
Paintable, with sensor head holder for
easy painting

RS-4000-F



GPS Speed Controlled Front Parking Sensor

Quick Installation - simple live &
earth
5 second off delay for traffic
Push fit gloss 22mm black heads
Sensors on between 1mph - 6mph
Length of cable 3m
at the furthest sensor
Detection range: 1.2m to 0.3m
Operating voltage: 12V DC
Variable volume

Buzzer included
Optional display available
Rear version available
without GPS (RS-4000)

Sensor Extension Cables





PRODUCTS / Sensor Accessories >>

C-KO-ULTRASCAN-01



4 Sensor Side Proximity Sensor System

Audible and visual warning
Detection range: 0 – 200cm (selectable via dip switches)
Works off the brake and indicator
Supplied with manual override switch
Buzzer and LED work on indicator
Only LED works on the brake
Operating voltage: 24V DC
Sensor horizontal detection angle 89°
Sensor vertical detection angle 43°

RS-DISPLAY

Visual Distance Display



Compatible with:
RS-4-18-R-I
RS-2-22-RM-A
RS-4-22-RM-A
RS-22/26-RMB

See price list for specific compatible parts)

RS-PS-EXT

Sensor Extension Cable



3 Metre Length

See price list for specific compatible parts



SENSOR ACCESSORIES

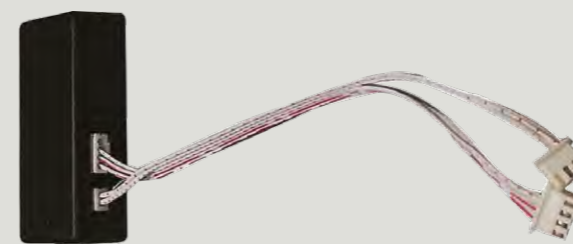
ULTRASCAN-MOUNT



Metal Underhanging Mount for Sensors

RS-PRO-ANDROID

Android Adaptor for PRO-OES



Change settings on the parking sensors
using an Android device

APK. Software included
Plug into ECU module

RS-PRO-ADAPTOR

Update Settings on the PRO-OES Parking Sensors



Update Settings
on the PRO-OES Parking Sensors

Software included (FOR USE WITH PC)
Plug into ECU module



CATEGORY 7



ALARM-A-LIGHT
Talking audio alert



WARNING ALARMS & Lighting

ALM-HBR-V2



Handbrake Warning Alarm

If the driver door is opened whilst the handbrake is not engaged the alarm will sound
"Warning, handbrake not applied"
Connected to handbrake and door trigger

AVSM14CLH



Left Turn Alarm

Single unit ideal for small vehicles where 1 alarm will suffice. UK Spec - LEFT TURN
Automatically mutes when hazards are in operation to avoid confusion.

Talking audio alert
'STAND CLEAR, THIS VEHICLE IS TURNING LEFT'

Rated voltage: 12/24 dc
Rated current 0.4a
Db rating 85 db @ 1 metre
Frequency rating 2500 +/- 10%
Modulation 80 per minute
Overvoltage & surge protected
Reverse polarity protected
Fully encapsulated waterproof to IP65 minimum
Dimensions 122 x 81 x 55mm
Right turn alarm alternative also available

AVAL2-14CLHO



ALARM-A-LIGHT

Talking audio alert
'STAND CLEAR, THIS VEHICLE IS TURNING LEFT'
Orange LED talking Alarm-a-light.

The ultimate alarm and light warning system.
When the alarm is activated the lights flash in unison with the sound, when mute or half volume are selected the lights flash brighter to highlight the danger.

Dual voltage
CE and emc approved
M.I.R.A. Tested for all on and off highway applications Epoxy sealed for greater durability against water
Complete with anti-vibration gasket and mounting screws
E marked e11*72/245*2009/19*7568*00
10R approved 10R-037568
Rear and right turn alarm alternatives available

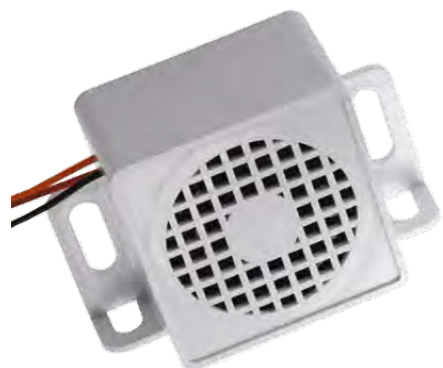


PRODUCTS / Warning Alarms



AVRWN02

Non-Bleeping Multi-Frequency Sound



Operating voltage: 12V / 24V DC
Working voltage range: 9v thru 28v
Rated current 0.50mA
Db rating 88dB
Overvoltage & surge protected
Reverse polarity protected
Fully encapsulated waterproof
to ip65 minimum

Dimensions:
100mm (L) x 65mm (H) x 46mm (D)
AVRWN02 - Night silent
through orange wire
AVRWN02R2 - Night silent
through double engage

AVR15C

Reverse Vocal Alarm



"This vehicle is reversing..."
Operating voltage: 12V / 24V DC
Working voltage range: 9v thru 28v
Rated current 0.4a and below at
rated voltage
Db rating 100db @ 1 metre
Frequency rating 1300 +/- 10%
Modulation 70 per minute
Overvoltage & surge protected
Reverse polarity protected
Fully encapsulated waterproof
to ip65 minimum

Dimensions: 75 x 70ø mm
Night silent through orange wire

ALM-PROG

Programmable Alarm



4MB
MP3 File
USB
Operating voltage: 12V / 24V DC
Dimensions: 105 x 45 x 68 mm



WARNING ALARMS



AVR81

Night Silent Reverse Alarm



Operating voltage: 12V / 24V DC
Working voltage range:
9v thru 28v
Rated current 0.4a and below
at rated voltage
Db rating 100db @ 1 metre
Frequency rating 1300 +/- 10%
Modulation 70 per minute
Overvoltage & surge protected
Reverse polarity protected

Fully encapsulated waterproof to ip65
minimum
Dimensions: 73.5 x 70ø mm
Night silent through orange wire

AVR85R2

Double Engage Reverse Alarm



Operating voltage: 12V / 24V DC
Rated current 0.4a and below
at rated voltage
Min db rating 92db @ 1 metre
Frequency rating 900 +/- 10%
Modulation: 70 per minute
Overvoltage & surge protected
Reverse polarity protected
Fully encapsulated waterproof
to ip65 minimum
Dimensions: 101 x 67 x 45mm
Case material abs

Operating temperature
-40c to + 85c

AVR85-3

Night Silent Reverse Alarm



Operating voltage: 12V / 24V DC
Rated current 0.4a and below
at rated voltage
Min db rating 92db @ 1 metre
Frequency rating 900 +/- 10%
Modulation: 70 per minute
Overvoltage & surge protected
Reverse polarity protected
Fully encapsulated waterproof to
ip65 minimum
Dimensions 101 x 67 x 45mm
Case material abs
Operating temperature

-40c to + 85c
Night silent
through orange wire



PRODUCTS / Work Lights



WORK LIGHTS



LED-WL606-F

Flood Work Light



Approval: ECE R10 Approved
Voltage: 10-30V DC
IP Rating: IP67
Warranty: 1 Year Warranty
Output: 27W (9*3wLEDs) - 1400LM
Patterns: Flood Beam
Die Cast Aluminium Housing
Magnetic Base

LED-WLCAM

Work Light with Built in Camera



24W Flood 8 x LED Work Light
4 Pin aviation connection
TV system: PAL
Effective pixels: 976 x 592
Viewing angle: 110°(H) 90°(V)
Image device: 1/3" CMOS
Focal length: f: 2.1mm
Operating voltage: 12V / 24V DC
Dimensions: 114mm(W) 51mm(D) 150mm(H)

LED-WL603-F

Flood Work Light



Approval: ECE R10 Approved
Voltage: 10-30V DC
IP Rating: IP67
Warranty: 1 Year Warranty
Output: 48W (16*3wLEDs) - 2400LM
Patterns: Flood Beam
Die Cast Aluminium Housing
Stainless Steel Bracket

LED-WL604-S

Spot Work Light



Approval: ECE R10 Approved
Voltage: 10-30V DC
IP Rating: IP67
Warranty: 1 Year Warranty
Output: 12W (4*3wLEDs) - 1080LLMM
Patterns: Spot Beam
Die Cast Aluminium Housing
Stainless Steel Bracket

LED-WL601-S

Spot Work Light



Approval: ECE R10 Approved
Voltage: 10-30V DC
IP Rating: IP67
Warranty: 1 Year Warranty
Die Cast Aluminium Housing
Output: 18W (6*3w LEDs) - 1260LM
Patterns: Spot Beam
Stainless Steel Bracket

LED-WL602-F

Flood Work Light



Approval: ECE R10 Approved
Voltage: 10-30V DC
IP Rating: IP67
Warranty: 1 Year Warranty
Output: 27W (9*3wLEDs) - 1400LM
Patterns: Flood Beam
Die Cast Aluminium Housing
Stainless Steel Bracket

LED-WL605-F

Flood Work Light



Approval: ECE R10 Approved
Voltage: 10-30V DC
IP Rating: IP67
Warranty: 1 Year Warranty
Output: 27W (9*3wLEDs) - 1400LM
Patterns: Flood Beam
Die Cast Aluminium Housing
Stainless Steel Bracket



FLASHERS

LED-6HA

Amber LED Heads



Approval: ECE R10/R65

Operating voltage: 12V/24V DC

IP Rating: IP67

Output: 9 x 3W LEDs

Patterns: 18 Flash Patterns

Synchronisation wire

Dimensions: 128mm x 28mm x 19mm

LPR103DVA

Low Profile Amber Strobe



Approval: ECE R10/R65

Operating voltage: 12V/24V DC

IP Rating: IP67

Output: 3 x 1W LEDs

Patterns: 11 Flash Patterns

Synchronisation with up to 20 lights

Dimensions: 89mm x 30mm x 8mm

4 and 6 LED versions are also available



FLASHERS

LED3DVA180

Amber Strobe Light



180° visibility

Approval: ECE R10/R65

Operating voltage: 12V/24V DC

IP Rating: IP67

Output: 3 x 1W LEDs

Patterns: 10 Flash Patterns

Synchronisation with up to 10 lights

Dimensions: 111mm x 37mm x 23mm

LED3DVA

Amber Strobe Light



Approval: ECE R10/R65

Operating voltage: 12V/24V DC

IP Rating: IP67

Output: 3 x 3W LEDs

Patterns: 10 Flash Patterns

Synchronisation with up to 10 lights

Dimensions: 94mm x 37mm x 27mm

LED-4HA

Amber LED Heads



Approval: ECE R10/R65

Operating voltage: 12V/24V DC

IP Rating: IP67

Output: 9 x 3W LEDs

Patterns: 18 Flash Patterns

Synchronisation wire

Dimensions: 95.5mm x 28mm x 19mm



INTERIOR LIGHTS



13026WM-PIR

PIR Motion Sense Interior LED Light



5x 0.5watt LEDs
750 effective lumens
Dimensions: Ø130mm x 18.5mm

Operating voltage: 12V / 24V DC
Colour temperature: 4500K
Diffused polycarbonate lens
ECE R10 approved

13614WM-PIR



27x 0.5watt LEDs
450 effective lumens
Dimensions: 136mm x 66mm x 16mm

18621WM-PIR



42x 0.5watt LEDs
650 effective lumens
Dimensions: 186mm x 66mm x 16mm

LED-INT-173



Output: 22 High
Powered LEDs
Dimensions: 173mm x 57mm x 15mm

LED-INT-300



Output: 54 High
Powered LEDs
Dimensions: 300mm x 57mm x 15mm

Interior Light Strip

Slimline Design
180° Light Dispersion
Aluminium alloy housing
Polycarbonate Construction
Frosted Lens for diffused light
Operating voltage: 10V / 30V DC

LED-INT-510



Output: 30 High Powered LEDs
Slimline Design

Interior Light Strip

180° Light Dispersion
Silicon Lens
Dimensions: 533mm Length
Aluminium Housing
Operating voltage: 12V DC



DAY RUNNING LIGHTS

DRL-VIN-C01

Curved Day Running Light



Sold in pairs

5 x CREE LED Bulbs per lamp

6500K LED

Operating voltage: 12V / 24V DC

Turn on when ACC connected

3 options for headlight connection

1. White Off

2. Green Dim Medium

3. Brown Dim Low

Lamp dimensions: 20mm (H) x 295mm (L) x 90mm (D)

DRL-VIN-C02

Curved Day Running Light



Sold in pairs

5 x CREE LED Bulbs per lamp

6500K LED

Operating voltage: 12V / 24V DC

Turn on when ACC connected

Turn off when headlights on

Lamp dimensions: 20mm (H) x 245mm (L) x 70mm (D)



CATEGORY 8



High / Low Switch
Heated Seats



HEATED SEATS

QZ-CK02/A0(A)



High / Low Switch Split Pad Heated Seats

4 Pads per seat
High / Low / Off Switch
Pad Dimensions: 138 x 500mm
45 degrees C - 70 degrees C
12 Volt
E-Marked

QZ-CK01/A0(D)



3 Stage Heated Seat Pads

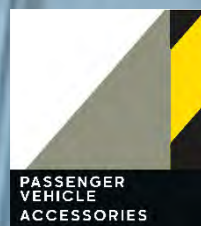
2 pad heated seat elements
2 pads per seat
3 stage variable heat settings
Carbon fibre design
Max temp 70C
50W max power consumption
Current drain 4.2A (max), 2.5A (med) 1.25A (low)
Dimensions 450 x 280 x 0.3mm

QZ-CK01/A0(A)



High / Low Switch Heated Seats

2 pads for one seat
High / Low / Off Switch
Pad Dimensions: 277 x 545mm
45 degrees C - 70 degrees C
12 Volt
E-Marked



CATEGORY 9

RM-HD102-DVD-B

10.2" DVD Roof Mount Monitor



10" Digital TFT panel
Resolution: 1024 x 600
Touch button controls
Built in surrounding light
Panel open angle: 180°
2 AV inputs / 1 AV output
Built in USB port and SD card slot
Built in IR & FM Transmitter
Built in HDMI input port
Colour: Black
Dimensions:
310 (side - side) x 278
(front - back)
215 (screen drop) mm



ROOF MOUNTED

RM-173-HD-BLACK

17.3" Roof Mount Monitor



Power: 12V DC
Built in speakers
Built in single channel IR transmitter
Built in FM transmitter
HDMI input supports up to 1080p
Supports USB up to 32GB
Supports Micro SD card up to 32GB

Dimensions: 458 (side - side) x 340 (front - back)
275 (screen drop) mm

RM-HD133-DVD

13.3" DVD Roof Mount Monitor



Built in speakers - Built in dual channel
IR transmitter
Built in FM transmitter
HDMI input supports up to 1080p
Supports USB up to 32GB
Supports SD card up to 32GB
Door light trigger

Black and Grey covers included
Dimensions: 416 (side - side) x 353 (front - back)
250 (screen drop) mm



Drop down roof monitor

17.3" TFT LCD panel - LED edge lit screen

Resolution: 1920 x 1080 (full HD)

Aspect ratio: 16:9 - Contrast ratio: 10000:1

PAL/NTSC auto switching

3 Video inputs (2x RCA, 1x HDMI)

2 Audio inputs (1x RCA, 1x HDMI)



13.3" TFT LCD panel - LED edge lit screen

Resolution: 1280 x 800

Aspect ratio: 16:9 - Contrast ratio: 1000:1

PAL/NTSC auto switching

2 AV inputs (one via fly lead, one via 3.5mm jack
on the side of the unit)

1 AV output - Power: 12V DC

REAR SEAT

C-KO-HR-POD-BENTLEY

10.1" Ultra-thin Touch Screen Android Headrest Player



Sold in pairs
Android 4.4.4 O.S.
10.1-inch digital screen
24-bit true colour/LED low power consumption backlight
Multi-points capacitive touch screen
Powerful ARM Cortex-A7 platform
1G DDR3 (quad-core) Built-in 8GB FLASH storage
High definition panel:1024(W)**(RGB)*600(H)
Built-in IR/FM Transmitter
USB/Micro SD card reader
Built-in Bluetooth
Earphone jack
Power supply: DC12V
1-way video input, 1-way audio input & 1-way audio output
Micro-SD(H): Max:64G
Built-in dual speakers
Support Wi-Fi 802.11 b/g/n
Includes mounting bracket

C-KO-HR-POD-HDMI-DVD-BL

9" Headrest Pod



Sold in pairs
9" TFT LCD panel
LED edge lit screen
Resolution: 800 x 480
Aspect ratio: 16:9
Contrast ratio: 10000:1
PAL/NTSC auto switching
1 AV input
1 AV output
Power: 12V DC
Built in speakers
Built in dual channel IR transmitter
Built in FM transmitter
HDMI input supports up to 1080p
Supports USB up to 32GB
Dimensions: 340mm x 325mm x 250mm

SOURCE UNITS

DVBT-HD630

DVBT-T2 TV Tuner with Antenna



Rear camera input with voltage trigger (RCA)
Monitor port for device control with select head units (Sony, Kenwood and JVC)
Tuner type: DVBT-T2
Number of tuners: 2
Output resolution: 1080p
TV system: PAL/NTSC
Frequency range: VHF and UHF band
Antenna: Active 5V
USB inputs: 2 (1 charge, 1 media)
RCA input: 1
HDMI input: 1
RCA output: 1
HDMI output: 1
HDD support: Yes up to 2TB
MHL support: Yes (Apple, Android)
Dimensions: 185mm(W) 130mm (L) 30mm (H)
Connection type: RCA, HDMI, F Connector

NESA-DVD-1005

Slim DVD Player with DIN Cage Fitting



In car DVD player
Din cage conversion kit supplied
Output resolution: 576i
Disc support: DVD, CD, CDR, CDRW, VCD
Mounting: Vertical / Horizontal
TV system: PAL / NTSC
RCA output
USB input
External remote eye
Power consumption: 1.5A
Operating voltage: 12V DC
Dimensions: 146mm (W) x 179mm (D) x 38mm (H)

ROSEN-AV7950H

Rosen Rear Seat Entertainment

Compatibility: DVD, CD, MP3, HDMI
USB charging port
Wireless remote control - 2-fold flat headphones
7" high definition digital LCD display
Media FM transmitter - media sharing between displays
Tilt screen



Headrest replacement with tablet-look styling, capacitive touch controls and the ability to configure the system to meet the family's needs. System includes two factory-match headrests with integrated 7.0" LCD Hi-Def displays, choice of media source devices, HDMI input to connect your smartphone, tablet or other HDMI devices like Google Chromecast, Roku Stick, Amazon Fire TV Stick to stream video via a Wi-Fi connection, auxiliary input for external sources, full system controls, 2-way up-down tilt, all-channel FM transmitter to play audio through the vehicles sound system, the ability to add front seat remote controls for each screen, a second auxiliary input for video game consoles, outputs for 2 additional screens and more.

HP-230

Dual Channel IR Headphones



2 Channel Infrared Headphone
Adjustable silicone headband and faux leather ear pads for maximum comfort
Ear cups swivel independently and fold flat for convenient storage
Built-in mute switch

7.5m maximum operational range
Auto off timer to increase battery life
40mm Mylar extended frequency driver
Variable volume level control
Channel 1: Left 2.3mHz, Right 2.8mHz
Channel 2: Left 3.2mHz, Right 3.8mHz
Requires 2 AAA batteries (included)
Supplied with soft touch cinch carry bag

VST-VHP-KIT

RF Headphone Kit



2 x RF Headphones
1 x Transmitter
Dual Channel RF
900MHz
Foldable design
Hard storage case included
Headphones require 2 x AAA batteries each
Transmitter with 2 inputs
Transmitter Dimensions: 180 x 70 x 25mm
Additional headphones also available

ROSEN-AC3640

Fold Flat Design



Wireless Dual Channel Headphone
Rosen
AAA Batteries supplied
Volume Switch on Earpiece for easy adjustment

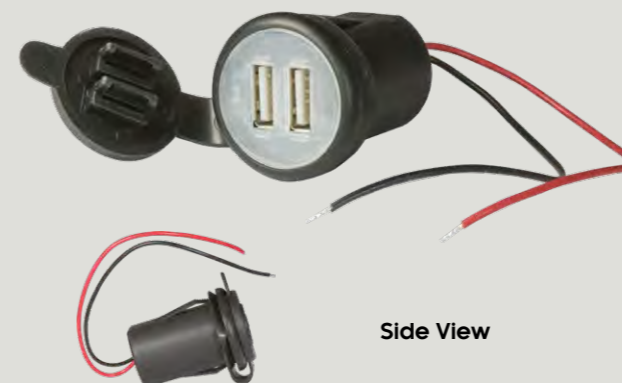


USB Charging Point



USB-CHARGE-3

USB Charging Point



Side View

2 Port USB Socket
Push fit charger
Rubber dust cover
Output voltage: 5V
Output rating: 3.1A total
Operating voltage: 12V / 24V DC
Dimensions: 35mm(W) 40mm(D) 35mm(H)

USB-CHARGE-4

USB Charging Point



2 Port USB Socket
Standard nut installation charger
Rubber dust cover
Output voltage: 5V
Output rating: 3.1A total
Operating voltage: 12V / 24V DC
Dimensions: 60mm(W) 40mm(D) 43mm(H)

USB-CHARGE-5

USB Charging Point



Illuminated Colour
Option

Single Port
Output voltage: 5V
Output rating: 2.4A
Operating voltage: 12V / 24V DC
Available in 3 different colours
Red, white & blue

USB-12V-MINI

12 Volt to 5 Volt



For use with dash cameras
and other 5-volt applications
Mini USB connection
Fused



CAN Bus Interfaces

CANM8-SCAN CAN Bus Interface



The CANM8 CANNECT CAMSCAN interface is the ultimate CAN Bus interface for the control of external safety cameras and side scan systems on vehicles which feature CAN Bus wiring.

Speed 12V (1A max) when the vehicle speed is 0 - 15 MPH.

Reverse 12V (1A max) when reverse gear is selected.

Left Indicator Continuous 12V (1A max) when the left indicator is active and the vehicle speed is 0 - 15 MPH.

Right Indicator Continuous 12V (1A max) when the right indicator is active and the vehicle speed is 0 - 15 MPH.



CAN BUS INTERFACES

CANM8-PARKONE

12V out when vehicle between 0 – 6mph



The CANM8-PARKONE is an ideal solution for people who are fitting parking sensors to the front of a vehicle and don't wish to use the brakes or a switch to activate the front sensors.

Ideal for use when installing parking sensors to the front of a 12V vehicle.

24V version also available

CANM8-PARK1-R

12V out when Reverse Gear is selected



The CANM8-PARK1-R is an ideal solution for people who are fitting parking sensors to the rear of a vehicle and have LED lights or CAN controlled lights which might show an error with the parking sensors connected.

Ideal for use when installing parking sensors to the rear of a 12V vehicle.

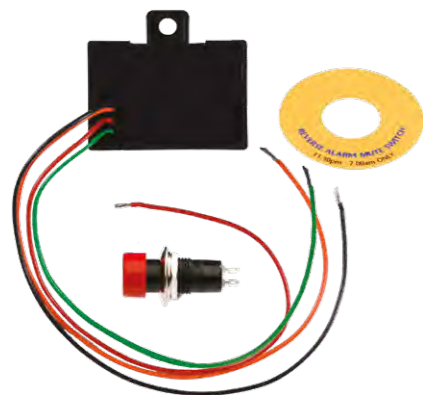


PRODUCTS / CONTROL UNITS



AVRRS6

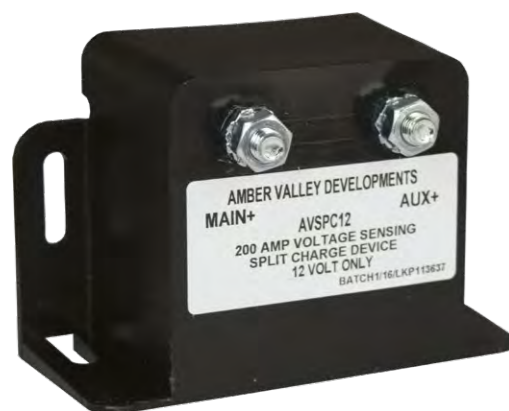
Timed Cut Off Switch



Six-minute timer cut-out
Auto reset
Dual voltage: 12V / 24V DC
IP67 rated - sealed against mud, water and vibration
30(H) x 88(W) x 47(D)
Can be used with any alarm

AVSPC12

12V Heavy Duty Split Charger - 200A



Designed for equipment powered from auxiliary batteries cannot drain the starting battery.
Rating amps: 200 A
Size: 120 x 80 x 70
Studs size: M8
Quiescent current: 1 mA
Switching voltages: 13.4V - 12.5V
24 Volt version also available

AVSPC400

Heavy Duty Charge Guard



The 400-amp version can cope with virtually all split charging requirements. It is ideally suited for vehicles such as breakdown vehicles where there is a high requirement for power to run tyre changing machinery. The relay is a double latching relay which draws zero current in either mode.
Image device: 1/3" SONY CCD
Focal length: f: 2.3mm
Operating voltage: 12V DC
Dimensions:
39mm(W) 35mm(D) 30mm(H)

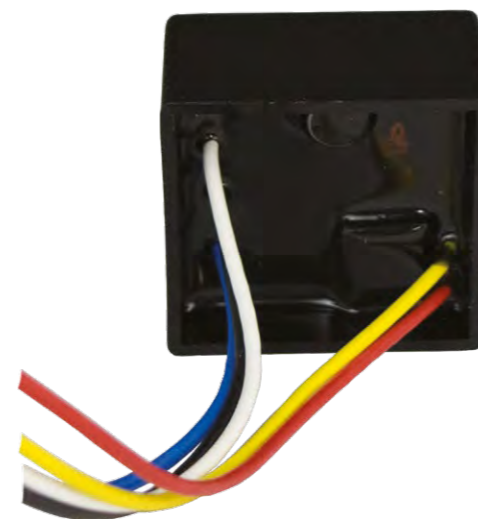


CONTROL UNITS



AVSMMOD1

Indicator Module

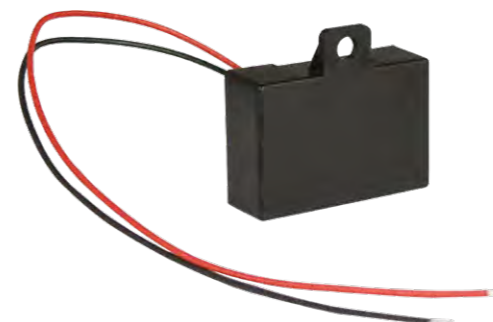


Indicator Control Unit
Dual voltage: 12V / 24V DC
Potted to withstand vibration
Solid state electronics
Fully waterproof
Universal - fits all known applications
Compact - easily fits under dashboard



AVSPLIMO1

Speed Sensing Device



Speed sensing device designed to turn off side scan, front sensors or side alarms above a predefined speed.
Dual voltage: 12V / 24V DC
Waterproof and dustproof
Multi-setting speeds available
Compatible with most quality manufactured products





PRODUCTS / Brackets & Mounts >>

SCAM-SPACER

Allows Side Cameras to be Mounted Further Out >>

Product may need to be adapted for use with all cameras
25mm deep



CA-COVER

Camera Cover for Front Facing Cameras >>

Mounts onto windscreen to prevent driver interference



C-KO-BRACKET

Monitor Bracket >>

Self-adhesive pad attached to base



BRACKETS & MOUNTS >>

CKO-589-DM

Monitor Bracket >>

Quick release bracket to remove monitor
Self-adhesive pad
attached to base



C-KO-DM-03

Monitor Bracket >>

Self-adhesive pad attached to base



C-KO-DM-04

Monitor Bracket >>

Self-adhesive pad attached to base





CABLES / Accessories



CABLES & ACCESSORIES



CAB-SV-MTR-4PIN



4 Pin Aviation
Screw Cables

Available in 1, 3, 5, 7.5, 10, 15, 20 & 25 Metre
Male to female 4 Pin extensions

TOT-MON/DVR-2



Female to Female
4 Pin

Power not terminated

TOT-MON/DVR



Adaptor Cable for DVR / Monitor

Female 4 Pin aviation connection to RCA and power

TOT-CAM-1



Camera Adaptor Cable

Male 4 Pin to Phono male video and Phono male audio
Unterminated bare end for live and earth



CABLES / Accessories



CAB-4SCR-SPLITTER

1 x Male to 2 x Female 4 Pin Splitter



GO-CONV-LEAD

4 Pin Aviation to S-Video



CAB-VGA-5M

VGA Lead for DVR
Lead for connecting DVR to a VGA monitor



CABLES & ACCESSORIES



TOT-MON/DVR-3

Adaptor Cable with BNC

Female 4 Pin aviation to BNC for video, RCA for audio and female power



CAB-HSDM-4PIN

Male HSD Water Blue to 4 Pin Connection
Power, Video & Ground as standard



CAB-HSD-4PIN

Female HSD Water Blue to 4 Pin Connection
Power, Video & Ground as standard





CABLES / Accessories



TOT-CAM-2

4 Pin Aviation to Video Phono and DC Socket



TOT-CAM-3

4 Pin Aviation to Fakra Water Blue video, Audio Phono and DC Socket



TOT-CAM-4

4 Pin Aviation to Video Phono and Bare Ends



CABLES & ACCESSORIES



TOT-CAM-5

4 Pin Aviation to Video & Audio Phono and DC Socket



TOT-CAM-6

4 Pin Aviation to Video Phono and Bare Ends



TOT-CAM-7

4 Pin Aviation to Video Phono and DC Plug





CABLES / Accessories

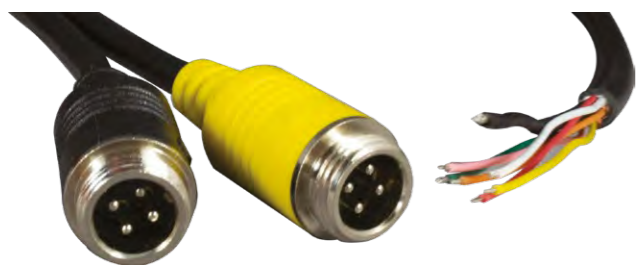
TOT-BARE-MALE

Bare End Male Aviation



TOT-BARE-MALE-2

Bare End Male Aviation x 2



TOT-BARE-FEMALE

Bare End Female Aviation



CABLES & ACCESSORIES

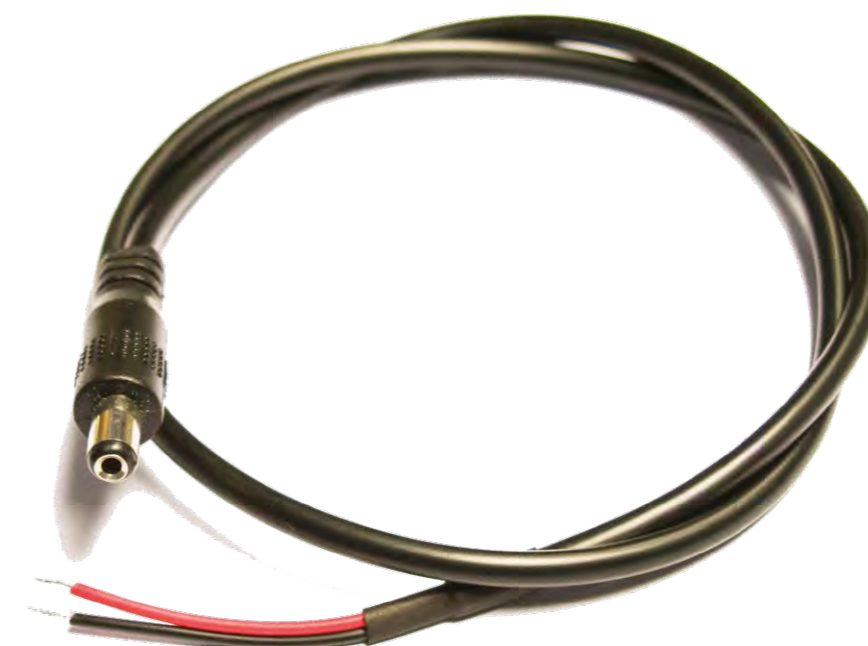
TOT-BARE-FEMALE-2

Bare End Female Aviation x 2



TOT-DC25

Bare End Power Lead





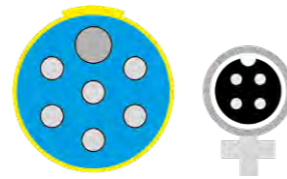
TRACTOR & Trailer Cables



CAV-TRACTOR-1-V

Socket for Single Camera

Female 4 Pin



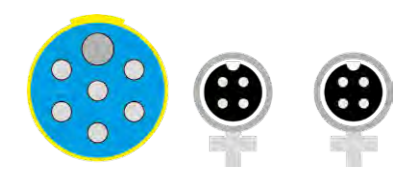
TRACTOR & TRAILER CABLES



CAV-TRACTOR-2-V

Socket for Two Cameras

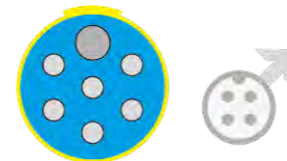
Female 4 Pin x 2



CAV-TRAILER-1-V

Socket for One Camera

Male 4 Pin

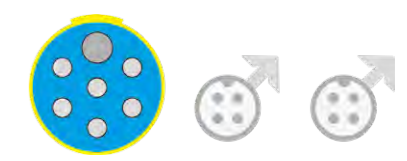


CAV-TRAILER-2-V

Socket for Two Cameras

Male 4 Pin x 2

Custom versions can be
manufactured, usual lead time
4-6 weeks.



CAV20-40

Blue Coil

Yellow 24N Connectors
Compatible with blue label sockets
4 Metre 7 Core



CAV20-20

Straight Mount for Sockets

Supplied with nuts & bolts





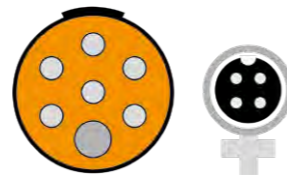
TRACTOR & Trailer Cables



CAV-TRACTOR-1

Socket for Single Camera

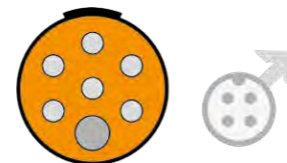
Female 4 Pin



CAV-TRAILER-1

Socket for One Camera

Male 4 Pin



CAV20-10

Right Angle Mount for Sockets

Supplied with nuts & bolts



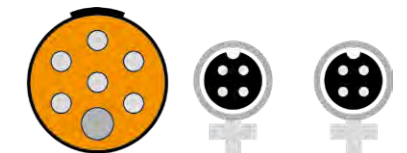
TRACTOR & TRAILER CABLES



CAV-TRACTOR-2

Socket for Two Cameras

Female 4 Pin x 2



CAV-TRAILER-2

Socket for Two Cameras

Male 4 Pin x 2



CAV20-01

Orange with Inverted 24N Connectors

Inverted large pin to avoid incorrect connection
of camera system to other equipment
Compatible with orange label sockets
4 Metre 7 Core





CABLES / Accessories

CA-SUZI-CAM-4

Tractor Socket for 4 Cameras

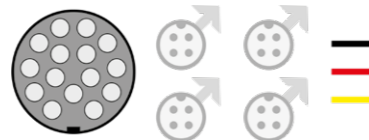
15 Pin connectors
4 x Female aviation leads
3 x Bare ended cables



CA-SUZI-MON-4

Trailer Socket for 4 Cameras

15 Pin connectors
4 x Male aviation leads
3 x Bare ended cables



CA-SUZI-COIL-15PIN

4 Metre 15 Core Electrical Coil



CABLES & ACCESSORIES

CAB-4PIN-12/24

24 Volt to 12 Volt Dropper

4 Pin aviation connection



CA-SW-I-4PIN

Automatically Detects and
Switches when Suzi Connected
Compatible with D1, AHD & 1080p cameras
2 Camera input - 1 Video output
4 Pin aviation connection
12V DC - Dimensions: 111mm x 63mm x 31mm



CAMERA SYSTEM

4 Pin Intelligent Switcher

Automatically detects connection of second camera.
Ideal for increasing artic safety with an additional
camera on the rear of the tractor.
Use with CKO suzi cables and connectors.
Additional 4 Pin cables of various lengths available.





PRODUCTS / DVR Accessories



SD Card

See Price List for P/N

Available in various memory capacity, part number signifies capacity
Class 10



2.5" Hard Disc Drive

See Price List for P/N

2-year manufacturer warranty
Available in 1TB or 2TB capacity
7mm - SATA III-6Gb/s
5400rpm
128MB Cache



CT-TRAY

Spare DVR caddy

Supplied without media installed
Please note that DVR needs to format new media to allow recording to begin
USB 2.0 Type B connection on rear



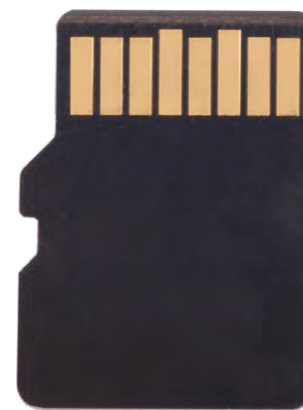
DVR ACCESSORIES



TF Card

See Price List for P/N

Available in various memory capacity, part number signifies capacity
Class 10
PRO version also available



2.5" Solid State Drive

See Price List for P/N

Solid state drive
5-year manufacturer warranty
Available in 250MB, 500MB, 1TB & 2TB capacity
7mm
SATA III-6Gb/s



CT-MIC

Discrete Microphone for Audio Recording

Discrete Microphone for Audio Recording
Requires 12V DC



PRODUCTS / DVR Accessories

CT-SOS

SOS Button and IR / LED Status Light Extension

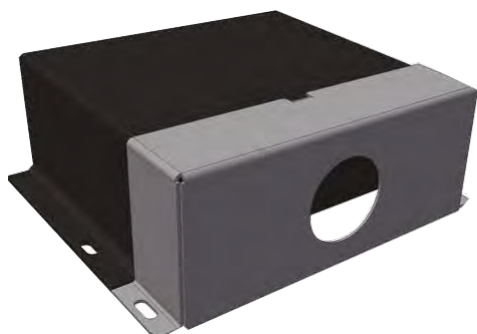
Push to make switch
When pressed alerts operator of an event



CT-CASE

Cable Tampering Preventer

Prevents drivers removing cables from the rear of the DVR



DVR-A1-ANT

External Multipurpose Antenna 4G, 3G, Wi-Fi and GPS

3M adhesive and fastened by three self-tapping screws
120mm diameter
3metre lead
SMA Male connection



DVR ACCESSORIES

DVR-3G/4G-ANT

External 3G / 4G Antenna

SMA Male connection



CT-SWITCH

Illuminated Incident Switch

Push to make switch
When pressed alerts operator of an event
Dimly illuminated to show DVR has power
Includes label
22mm hole diameter
12 Volt



CT-REMOTE

Spare Remote Control for DVR

Supplied with battery
Additional batteries also available



CT-USB-LEAD

Connection from CT-Tray to PC
USB 2.0 Type A to Type B





ADAPTORS

CPC-CN16000



Female to Male



PSG02786



Male to Female



CPC-CN05261



Male to Male



ADAPTORS

CPC-CN00545



Male to Male



PSG01881



Female to Female



CPC-CN04147

HDMI-M



HDMI Cables
Available in 1, 3, 5 & 10 Metres



CABLES / Accessories



CABLES & ACCESSORIES



RCA-VIDEO-M



Video Cables
Male to Male Phono
Available in 1.2, 3, 5, 10 & 20 Metres



CPC-AV02488



3.5mm Conversion to Phono



MAD-PX070



Phono Y-Lead
1x Female to 2 x Male



RCA-M



Audio & Video Cables
Male to Male Phono
Available in 1.2, 3, 5, 10 & 20 Metres



CPC-AV00999



3.5mm Conversion to Phono



MAD-PX071



Phono Y-Lead
1x Male to 2 x Female





SW-ROC



Rocker Switch

SW-LED



Illuminated 12V DC
Push to make

SH6



Momentary Switch

SW-ROC-#



Rocker Switch with Status LED
Available in blue, green, amber & red



DP1



Door Switch
Circuit open when door closed



PRODUCTS / Relays

MNRY-4-12 / MNRY-4-24

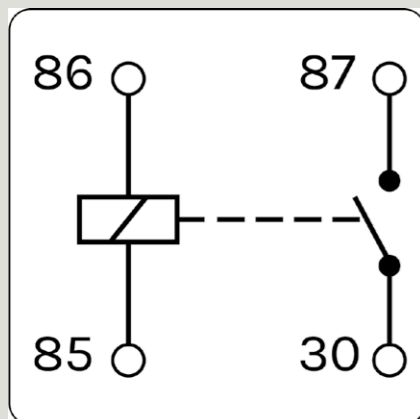
Make & Break Relay



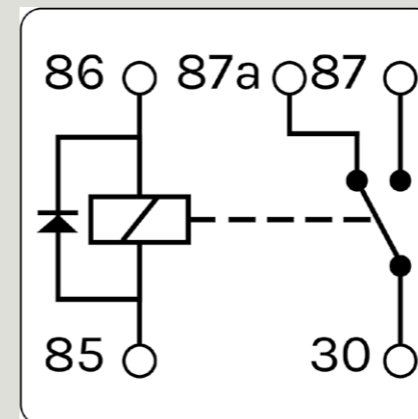
RELAYS

MNRY-5-12D

Changeover Relay



4 Pin
12V DC or 24V DC



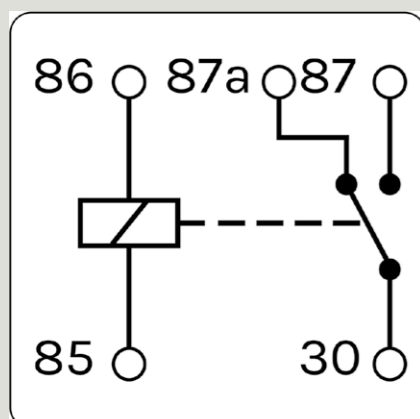
Changeover Relay
with Diode
5 Pin
12V DC

MNRY-5-12 / MNRY-5-24

Changeover Relay



RY100



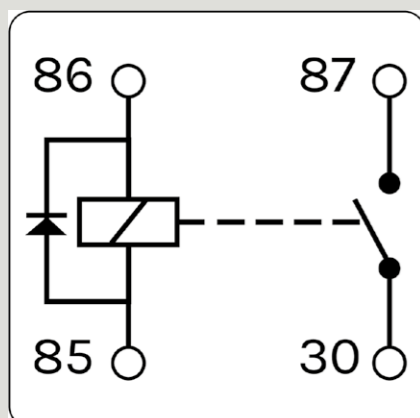
5 Pin
12V DC or 24V DC



Relay Holder with Connections

MNRY-4-12D

Make & Break Relay



Make & Break Relay
with Diode
4 Pin
12V DC



CATEGORY 11

SIB-SWR



Remote Control and Display Panel
10 Metres of cable



POWER INVERTERS

Power Inverter

12 Volt Pure Sine Wave Inverters



12 Volt Pure Sine Wave Inverters
Pure Sine Wave Inverters. Replicates true shore power, suitable for all appliances.
Twin socket adjustable between centre tapped earth and neutral earth bonding. USB charger.
Adjustable between Neutral Earth
Bonding and Centre Tapping. No DC cables supplied.

Model	Remote	Weight Kg	Size L x W x D mm	Cables	Part Number
12V 200W Twin Sockets	Optional Extra	1.4	210 x 190 x 85	1m Cigg Plug	SIB12200
12V 300W Twin Sockets	Optional Extra	1.4	210 x 190 x 85	1m DC 8mm ring	SIB12300
12V 600W Twin Sockets	Optional Extra	2.2	250 x 190 x 85	1m DC 8mm ring	SIB12600
12V 1000W Twin Sockets	Optional Extra	2	300 x 190 x 85	8mm connection	SIB121000
12V 1600W Twin Sockets	Optional Extra	3.6	300 x 190 x 85	8mm connection	SIB121600

Power Inverter

24 Volt Pure Sine Wave Inverters



Pure Sine Wave Inverters. Replicates true shore power, suitable for all appliances.
Twin socket adjustable between centre tapped earth and neutral earth bonding. USB charger. Adjustable between Neutral Earth Bonding and
Centre Tapping. No DC cables supplied.

Model	Remote	Weight Kg	Size L x W x D mm	Cables	Part Number
24V 200W Twin Sockets	Optional Extra	1.4	210 x 190 x 85	1m Cigg Plug	SIB24200
24V 300W Twin Sockets	Optional Extra	1.4	210 x 190 x 85	1m DC 8mm ring	SIB24300
24V 600W Twin Sockets	Optional Extra	2.2	250 x 190 x 85	1m DC 8mm ring	SIB24600
24V 1000W Twin Sockets	Optional Extra	2	300 x 190 x 85	1m DC 8mm ring	SIB241000
24V 1600W Twin Sockets	Optional Extra	3.6	300 x 190 x 85	8mm connection	SIB241600



CATEGORY 12

CONSUMABLES

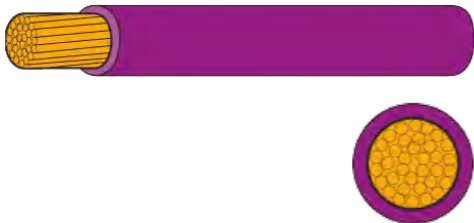
5 Way Female SuperSeal Connectors



PRODUCTS / Automotive Cable

Single Core

Available in:
Black, Red, Yellow, Blue, Pink, Orange,
Grey, Green, Brown
Reel size (metres): 50, 100



Automotive Cable
Cores manufactured to
ISO 6722-1:2011
(Class B) 105°C
Plain Copper Conductors
to BS EN 60228:2005 - PVC
Insulated
Single core suitable for use at
temperatures from -40°C to
105°C
with excursions up to 120°C

Twins and multicores PVC
sheathed at 70°C
Suitable for 12V and 24V
systems
(Maximum voltage 60V)
Reduced insulation gives
considerable savings in
weight and volume especially
when used in large wiring
harnesses
Good resistance to petrol,
diesel, lubricating oils and
diluted acids PVC insulation
offers good resistance to
abrasion and cut through.

Part No	*Conductor Specification (mm)	Conductor Cross Section (mm²)	Maximum Overall Diameter (mm)	Nominal Current Rating (Amps)**
TW.5	16/0.20	0.5	1.6	11
TW.75	24/0.20	0.75	1.75	14
TW1.0	32/0.20	1	1.95	16.5
TW1.5	21/0.30	1.5	2.3	21

Flat Twin Core

Reel size (metres): 30, 100



Part No	*Conductor Specification (mm)	Conductor Cross Section (mm²)	Maximum Overall Diameter (mm)	Nominal Current Rating (Amps)**
TW02/06	2 x 16/0.20	2 x 0.5	2.7 x 4.6	11
TW02/04	2 x 24/0.20	2 x 0.75	3.1 x 4.9	14
TW02/01	2 x 32/0.20	2 x 1.0	3.0 x 5.0	16.5

Twin Core

Reel size (metres): 30, 100



Part No	*Conductor Specification (mm)	Conductor Cross Section (mm²)	Maximum Overall Diameter (mm)	Nominal Current Rating (Amps)**
TW02/21	2 x 16/0.20	2 x 0.5	5.2	11
TW02/22	2 x 24/0.20	2 x 0.75	5.3	14
TW02/03	2 x 32/0.20	2 x 1.0	5	16.5

*The conductor specifications shown are representative configurations, actual cable strand may differ slightly, but will meet resistance values shown. **Nominal current amperage ratings are provided as a guide only and can vary depending on application, conditions and environmental factors. If in doubt, please consult a qualified electrician.

AUTOMOTIVE CABLE

Three Core

Reel size (metres): 30, 100



Part No	*Conductor Specification (mm)	Conductor Cross Section (mm²)	Maximum Overall Diameter (mm)	Nominal Current Rating (Amps)**
TW03/03	3 x 24/0.20	3 x 0.75	5.7	14
TW03/01	3 x 32/0.20	3 x 1.0	5.5	16.5

Five Core

Reel size (metres): 30, 100



Part No	*Conductor Specification (mm)	Conductor Cross Section (mm²)	Maximum Overall Diameter (mm)	Nominal Current Rating (Amps)**
TW05/02	5 x 24/0.20	5 x 0.75	6.3	14
TW05/01	5 x 32/0.20	5 x 1.0	6.3	16.5

Seven Core

Reel size (metres): 30, 100



Part No	*Conductor Specification (mm)	Conductor Cross Section (mm²)	Maximum Overall Diameter (mm)	Nominal Current Rating (Amps)**
TW07/03	7 x 16/0.20	7 x 0.5	6	11
TW07/01	7 x 24/0.20	7 x 0.75	6.8	14
TW07/04	7 x 32/0.20	7 x 1.0	7.4	16.5

*The conductor specifications shown are representative configurations, actual cable strand may differ slightly, but will meet resistance values shown. **Nominal current amperage ratings are provided as a guide only and can vary depending on application, conditions and environmental factors. If in doubt, please consult a qualified electrician.



CONSUMABLES



Standard Fuse

Packs of 25
FUSE-2.0A
FUSE-3.0A
FUSE-5.0A
FUSE-7.5A
FUSE-10.0A
FUSE-15.0A
FUSE-20.0A



Mini Fuse

Packs of 25
FUSE-MINI-2.0A
FUSE-MINI-3.0A
FUSE-MINI-5.0A
FUSE-MINI-7.5A
FUSE-MINI-10.0A
FUSE-MINI-15.0A

Splash Proof Fuse



FH-205 - 5 Amp
FH-210 - 10 Amp
FH-220 - 20 Amp
FH-230 - 30 Amp



K-69681



Piggy Back Fuse Holder
For standard blade fuses



CONSUMABLES



FUSEHOLDER-FU8-A



Used for Standard Blade Fuses
Suitable for clipping together or fixing
using a mounting plate
Voltage rating: 32V DC
Current rating 20A

FUSEHOLDER-FU8-B



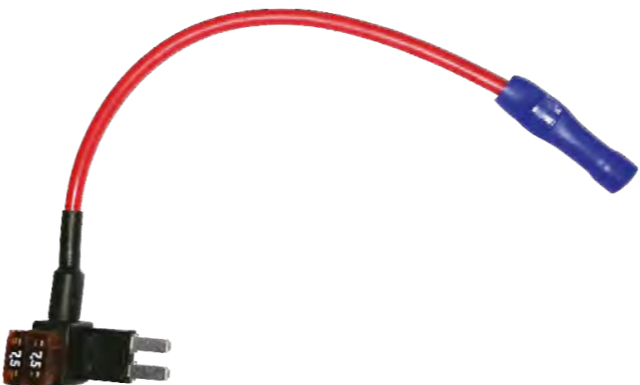
K-69680



Piggy Back Fuse Holder
For mini blade fuses



K-69682



Mini Blade Fuse Holder





PRODUCTS / Consumables



CONSUMABLES

SSMF



5 Way Female SuperSeal Connectors

Provides waterproof connection to IP67

Suitable for 0.5-1.5mm²

Each pack contains enough terminals and seals



SS5M



5 Way Male SuperSeal Connectors

Provides waterproof connection to IP67

Suitable for 0.5-1.5mm²

Each pack contains enough terminals and seals



K-69666



Female Cigarette Socket Unfused

Female Cigarette Socket Unfused

1.5M



K-69671



Female Cigarette Socket Fused with 5Amp

Female Cigarette Socket Fused with 5Amp



K-69677



Female Cigarette Socket Unfused

Female Cigarette Socket Unfused

0.2M



PRODUCTS / Terminals

Female Spade



Female Spade



Insulated Female Spade

Female Spade
WT5 – 6.3mm Blue

Female Spade Fully Insulated
WT8 – 2.8mm Red
WT9 – 4.8mm Red
WT10 – 6.3mm Red
WT11 – 4.8mm Blue
WT12 – 6.3mm Blue
WT13 – 6.3mm Yellow

Butt / Fork



Butt



Fork

Butt
WT16 – 4mm Blue

Fork
WT16 – 4mm Blue
WT24 – 3.7mm Red
WT25 – 4.3mm Red
WT26 – 5.3mm Red
WT79 – 6.4mm Red
WT27 – 3.7mm Blue
WT28 – 4.3mm Blue
WT29 – 5.3mm Blue
WT30 – 6.4mm Blue
WT33 – 5.3mm Yellow
WT34 – 6.4mm Yellow

Ring

All Terminals conform to:
BS4579 BS4G178
Red
Blue
Yellow
Crimp Terminals
Packs of 100



Ring

Ring
WT29 – 5.3mm Blue WT38 – 5.3mm Red
WT30 – 6.4mm Blue WT41 – 3.2mm Blue
WT33 – 5.3mm Yellow WT42 – 3.7mm Blue
WT34 – 6.4mm Yellow WT43 – 4.3mm Blue
WT35 – 3.2mm Red WT44 – 5.3mm Blue
WT36 – 3.7mm Red WT45 – 6.4mm Blue
WT37 – 4.3mm Red

TERMINALS

Piggy Black / Male Tab



Piggy Black



Male Tab

Piggy Black
WT55 – 6.3mm Red
WT56 – 6.3mm Blue
WT57 – 6.3mm Yellow

Male Tab
WT58 – 6.3mm Red
WT59 – 6.3mm Blue
WT60 – 6.3mm Yellow

Bullet / Receptacle Bullet



Bullet



Receptacle for Bullet

Bullet
WT63 – 4.0mm Red
WT64 – 5.0mm Blue
WT65 – 5.0mm Yellow

Receptacle for Bullet
WT66 – 4.0mm Red
WT67 – 5.0mm Blue
WT68 – 5.0mm Yellow



CONSUMABLES

TAPE-T1-N



PVC Electrical Tape 8 Pack

Black
19mm x 20M

TAPE-T9



Self-Amalgamating Tape

19mm x 20M

TAPE-T27



Double Sided Tape

50mm x 10M

TAPE-T29



Cloth Tape

Woven Cloth Tape
19mm x 25M



CONSUMABLES

Cable Ties



TIES-TR1 Nylon Cable Ties x 100 - 100mm x 2.5mm
TIES-TR2 Nylon Cable Ties x 100 - 150mm x 3.6mm
TIES-TR3 Nylon Cable Ties x 100 - 160mm x 4.8mm
TIES-TR4 Nylon Cable Ties x 100 - 200mm x 2.5mm
TIES-TR7 Nylon Cable Ties x 100 - 300mm x 3.6mm
TIES-TR8 Nylon Cable Ties x 100 - 300mm x 4.8mm
TIES-TR10 Nylon Cable Ties x 100 - 370mm x 4.8mm
TIES-TR12 Nylon Cable Ties x 100 - 430mm x 4.8mm

Split Conduit



CONDUIT-SCON1 6.5mm - 10.0mm x 25M
CONDUIT-SCON2 10.1mm - 13.0mm x 25M
CONDUIT-SCON3 11.8mm - 16.0mm x 25M
CONDUIT-SCON5 16.9mm - 21.2mm x 25M
SCT4.5-100 4.5mm - 7.2mm x 100M
SCT9-100 9.0mm - 13.3mm x 100M
SCT11-100 11.0mm - 16.4mm x 100M

TL-SCTOPEN / TL-SCTOPEN-LARGE



Small - Split Convoluted Tubing Opener 6.5mm - 14.5mm
Large - Split Convoluted Tubing Opener 16.9mm - 23.1mm



CONSUMABLES

STH

Hex Head Self Drilling Screws

STH4 Hex Head Self Drilling Screws 10 x 1/2"
(Zinc plated) 8mm Head
STH6 Hex Head Self Drilling Screws 10 x 1"
(Zinc plated) 8mm Head
STH1 Hex Head Self Drilling Screws 8 x 1/2"
(Zinc plated) 7mm Head



SF6

Speed Fastener U Type 8 (100)

Measures approximately 16 x 11mm,
and ideally suited to a number 8 screw.



CONSUMABLES

SSPC

Stainless Steel Rubber Lined P-Clip

SSPC16 - 16mm x 25
SSPC21 - 21mm x 25
SSPC25 - 25mm x 25



PC10-B

Nylon P-Clip

PC-102-B 6.0mm - Black x 100
PC-105-B 12.0mm - Black x 100
PC-107-B 19.0mm - Black x 100



Heat Shrink

3:1 Ratio

Ideal for sealing 4 Pin aviation connections





CONSUMABLES



CONSUMABLES



AT24

800 Assorted Self
Tappers



Pan Head Pozidrive 6-12 gauge
(Type AB) Contents (8 Sizes)

100 x ST3 (6 x 1/2)
100 x ST4 (6 x 3/4)
100 x ST6 (8 x 1/2)
100 x ST7 (8 x 3/4)
100 x ST8 (8 x 1)
100 x ST9 (10 x 1/2)

100 x ST10 (10 x 3/4)
100 x ST13 (12 x 3/4)

AT38

Assorted Stainless
Steel Self Tappers (450)



+Pozi Pan. DIN7981 Grade 2 (Type AB)
Contents (9 Sizes)

6 x 1/2
6 x 3/4
6 x 1"
8 x 1/2
8 x 3/4
8 x 1"

10 x 1/2
10 x 3/4
10 x 1"

AT110

200 Assorted Micro
Fuses



200 Assorted Micro Fuses
3-30 Amp

AT130

Assorted Box of 3:1 Heat
Shrink



Mixed Adhesive Lined
UL approved. UL 224 VW-1.
Contains: 225 pieces 3mm - 18mm

AT71

700 Assorted Self
Tappers



Black Flanged (6-10 Gauge)
Contents (7 Sizes)

100 x ST16 (6x1/2)
100 x ST17 (6x3/4)
100 x ST18 (6x1)
100 x ST19 (8x1/2)
100 x ST20 (8x3/4)
100 x ST22 (10x1/2)

100 x ST23 (10x3/4)

AT163

Assorted Pan Head



Self-drilling Self-tappers (Pozi)
Qty 1200

GRO-MG

Mixed Blanking
Grommets



Assorted box of blanking grommets
6 - 25mm

25mm x 30pcs
20mm x 50pcs
16mm x 50pcs
12mm x 50pcs
9mm x 50pcs
6mm x 50pcs

GRO-WG

Mixed Wiring Grommets



Assorted box of wiring grommets
6 - 25mm

25mm x 30pcs
20mm x 50pcs
16mm x 50pcs
12mm x 50pcs
9mm x 50pcs
6mm x 50pcs

CONSUMABLES



JAN11

Paper Wipes

2-ply
190mm x 150M
Blue



LS1

Superglue (20g)

Bonds Metals, Plastics, Wood, Ceramics, Leather, Rubber, Card, Glass and many other materials



LOCAA319-0.5

Rear View Mirror Bonder

0.5ml
Suitable for glass and metal only



LS5

Epoxy Resin Double Syringe (25ml)

General purpose
Epoxy Resin
Twin Mix Syringe
Cures in 5 minutes
(depending on ambient temperature)

CONSUMABLES

LS184

Label Remover, Aerosol/Spray (400ml)



With long straw attached to can
Penetrate rapidly
Hydrocarbon cleaner
Safe on most plastics
Safely remove adhesive residue
400ml

LS195

High Performance Rust Preventative Wax Oil



A superb blend of oils, waxes, corrosion inhibitors and dewatering agents that in turn combine to form a heavy-duty rust preventative
500ml Aerosol Clear

LS28

Brake Cleaner (400ml)



With short straw attached to nozzle.
Removes brake dust, oil and grease
Protects against rust and corrosion
Apply without dismantling parts
Helps prevent brake squeal
Leaves no residue



CATEGORY 13

TOOLS

TL-CRIMPER

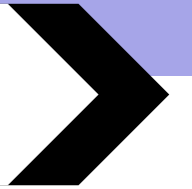




CATEGORY 13 / Tools



TOOLS



TL-SCUTTER

Step Cone Cutter



MCC-10 - 4-12mm
MCC-11 - 4-20mm
MCC-12 - 6-30mm

TL-CRIMPER

Crimper



TL-WIRECUTTER

Wire Cutter



TL-HEX-2.0MM

Hex Driver 2.0mm
Ideal for use with side camera screws



TL-BOX

Tool Box



SOLDER-0.8MM

SOLDER-0.8MM / SOLDER-1.2MM



LS6

Butane Gas (400ml)
High quality butane
Suitable for refillable soldering irons, Blow lamps and
cigarette lighters
400ml



SOL8

Soldering Iron
Gas Powered Soldering Iron



SOLDERTIP-4



SOLDERTIP-8



SOLDERTIP-1



SOLDERTIP-5



SOLDERTIP-9



SOLDERTIP-2



SOLDERTIP-6



SOLDERTIP-10



SOLDERTIP-3



SOLDERTIP-7



SOLDERTIP-11

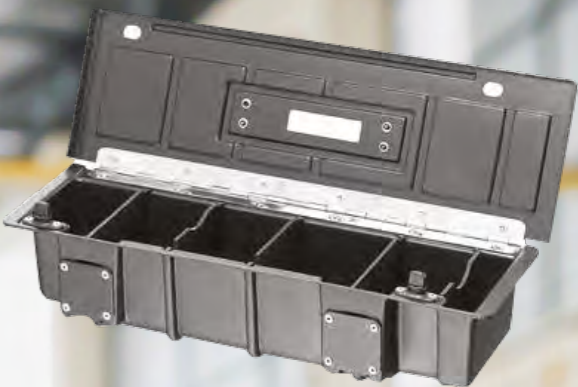




CATEGORY 14

CASH BOXES

Drivers Cash Box
Drivers Choice





CATEGORY 14 / Cash Box

CASH BOX-F

Drivers Cash Box Anti Dipper



High Impact ABS with Mild Steel support to make for a light weight yet very strong drivers cash box with 2 mild steel fixing points that will fit most standard hooks or can be utilised with our mounting plate. 4 Compartment

CASH BOX-E

Drivers Choice, Bus Drivers Cash Box Anti Dipper Bucket



High Impact ABS with Mild Steel support to make for a light weight yet very strong drivers cash box with 2 mild steel fixing points that will fit most standard hooks or can be utilised with our mounting plate. 4 Compartment

CASHTRAY-DOUBLE

Bus Change Tray



Door mounted change tray
Single version also available



Cash Box

CASH BOX-D

Drivers Cash Box Drivers Choice



High Impact ABS with Mild Steel support to make for a light weight yet very strong drivers cash box with 2 mild steel fixing points that will fit most standard hooks or can be utilised with our mounting plate. 5 Compartment

CASHBOX-MOUNT

Cash Box Mounting Plate



Heavy duty drivers Cash Box mounting plate, easy fix mounting.

NAMETAG-1

Depot Name Tag Holder



BR Cat Number: B3-A2-8700057
Name Tag Holder Polycarbonate Tube & PE End Plug



CATEGORY 15

DVD560U 3/4 DIN DVD Player



Output resolution: 576i
Disc support: DVD, CD, CDR, CDRW, VCD
Mounting: Vertical / Horizontal
RCA outputs: 1
USB input: 1
SD card input: 1
Operating voltage: 12V DC
Dimensions: 160mm (W) x 150mm (D) x 45mm (H)



NEW LISTING / AHD CAMERAS



AHD-F307-1080P

AHD-F307-1080P AHD 1080P Forward Facing Window Mount Camera



4 Pin aviation connection
TV system: AHD
Output resolution: 1080p
FPS: 25
Viewing angle: 110°
Image Device: 1/3" CMOS
Operating voltage: 12V DC
Dimensions: 58mm(W) 55mm(D) 50mm(H)



AHD-CAM-676

AHD Wing Mirror Side Camera



4 Pin aviation connection
TV system: AHD
Output resolution: 720p
Mirror image: Yes – fixed
Audio: Yes
FPS: 25
Viewing angle: 110°
Image Device: 1/3" SONY CMOS
Operating voltage: 12V DC
Dimensions: 56mm(W) 35mm(D) 65mm(H)



NEW LISTING /CAMERA KIT

CK-18 CK-18 Kit Camera



4 Pin aviation connection
TV system: PAL
Output resolution: 576i
Mirror image: Yes
Night vision IR: Yes - 18 LEDs
FPS: 25
Viewing angle: 80°(H) 60°(V)
Image Device: 1/3" Sharp CMOS
Operating voltage: 12V DC
Dimensions: 80mm(W) 63mm(D) 70mm(H)



D1 CAMERAS

CA-309-PAL



Wide Angle Camera

4 Pin aviation connection
TV system: PAL
Output resolution: 576i
Guidelines: Yes - Selectable
Mirror image: Yes - Selectable
FPS: 25
Viewing angle: 170°
Image Device: 1/3" CMOS OV60
Operating voltage: 12V DC
Dimensions: 28mm(W) 40mm(D) 23mm(H)

CA-309-NTSC



Wide Angle Camera

4 Pin aviation connection
TV system: NTSC
Output resolution: 480i
Guidelines: Yes - Selectable
Mirror image: Yes - Selectable
FPS: 30
Viewing angle: 170°
Image Device: 1/3" CMOS OV60
Operating voltage: 12V DC
Dimensions: 28mm(W) 40mm(D) 23mm(H)



DVR COMPARISON



DVR COMPARISON

	DVR-4SD	DVR-4HD	AHD-8HD
Recording			
Max Resolution	1080P (1920 X 1080)	1080P (1920 x 1080)	1080P (1920 x 1080)
Channels	4	4	8
Audio	✓	✓	✓
Video Compression	H.265+ Encrypted AVI	H.265+ Encrypted AVI	H.265+ Encrypted AVI
AHD Compatible	✓	✓	✓
IPC Compatible	X	1 Channel	2 Channel
AV in / out			
Video input	4x 4 pin aviation	4x 4 pin aviation	8x 4 pin aviation
Video output	4 pin aviation, VGA	4 pin aviation, VGA	4 pin aviation, VGA
Audio input	4x 4 pin aviation	4x 4 pin aviation	8x 4 pin aviation
Audio output	4x 4 pin aviation	4x 4 pin aviation	8x 4 pin aviation
OSD	1 / 2 / 4	1 / 2 / 4	1 / 2 / 4 / 6 / 9
Network streaming			
Ethernet Port	X	X	X
Wi-Fi	Optional	Optional	Optional
4G Compatible	Optional	Optional	Optional
Mobile App	Android / OS	Android / IOS	Android / IOS
Storage / Backup			
HDD / SSD	X	2.5" SATA II (2TB max)	2.5" SATA II (2TB max)
SD Card	2x SDxC (256GB max)	1x SDxC (256GB max)	1x SDxC (256GB max)
Backup	USB 2.0 / network	USB 2.0 / network	USB 2.0 / network
Peripheral			
Lockable	✓	✓	✓
GPS	✓	✓	✓
G-Sensor	✓	✓	✓
Timer off Delay	Up to 24 hours	Up to 24 hours	Up to 24 hours
HDD / SD Failure Warning	✓	✓	✓
Motion Detection	X	X	X
Camera Full Screen Trigger	✓	✓	✓
Split Screen Camera Trigger	X	X	X
USB mouse control	✓	✓	✓
Remote Control	✓	✓	✓
USB Port	USB 2.0	USB 2.0	USB 2.0
Other			
Power output	12v	12v	12v
Power input	8 - 36v (DC)	8 - 36v (DC)	8 - 36v (DC)



NEW LISTING /DVR

DVR-4SD 1080P (1920 X 1080)



Video input: 4x 4 pin aviation
Video output: 4 pin aviation, VGA
Audio input: 4x 4 pin aviation
Audio output: 4x 4 pin aviation
OSD: 1 / 2 / 4





DVR

DVR-4HD



1080P (1920 x 1080)

Video input: 4x 4 pin aviation
Video output: 4 pin aviation, VGA
Audio input: 4x 4 pin aviation
Audio output: 4x 4 pin aviation
OSD: 1 / 2 / 4



DVR-8HD



1080P (1920 x 1080)

Video input: 8x 4 pin aviation
Video output: 4 pin aviation, VGA
Audio input: 8x 4 pin aviation
Audio output: 8x 4 pin aviation
OSD: 1 / 2 / 4 / 6 / 9



NEW LISTING / MONITORS

AHD-7MM 7" Mirror Monitor Clip On



TV system: PAL / NTSC / AHD
Screen size: 7"
Resolution: 1024 X 600
Contrast ratio: 500:1
Aspect ratio: 16:9
Brightness: 400cd/m²
Viewing angle: U: 50° D: 70° R/L 70°/70°

4 pin aviation inputs: 2
Trigger inputs: 1
Operating voltage: 12V DC
Dimensions: 250mm (W) 21mm (D) 109mm (H)





NEW LISTING / Cameras

AHD-FT-CAM

Ford Transit Brake Light Camera 2014+



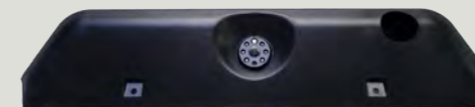
4 Pin aviation connection
TV system: AHD
Output resolution: 720p
Mirror image: Yes – fixed
Night vision IR: Yes – 6 LEDs
FPS: 25
Viewing angle: 100°
Image Device: 1/3 NVP SONY CCD
Operating voltage: 12V DC
Dimensions: 385mm(W) 130mm(D) 55mm(H)



Vehicle Specific Cameras

C-KO-NI-CAM

Iveco Daily Brake Light Camera



4 Pin aviation connection
TV system: NTSC
Output resolution: 480i
Mirror image: Yes
Night vision IR: Yes – 6 LEDs
Audio: Yes

AHD-VR-CAM

Vauxhall Vivaro, Renault Traffic Brake Light Camera



4 Pin aviation connection
TV system: AHD
Output resolution: 720p
Mirror image: Yes – fixed
Night vision IR: Yes – 9 LEDs

AHD-TC-CAM-LED

Ford Transit Custom Brake Light Camera 2016+ (LED Version)



4 Pin aviation connection
TV system: PAL
Output resolution: 576i
Mirror image: Yes – fixed
FPS: 25
Viewing angle: 110°
Image Device: CMD-III
Operating voltage: 12V DC
Dimensions: 338mm(W) 37mm(D) 25mm(H)

C-KO-VR-CAM

Vauxhall Vivaro, Renault Traffic Brake Light Camera 2014+



4 pin aviation connection
TV system: PAL
Output resolution: 576i
Mirror image: Yes – fixed

C-KO-T6-CAM

VW T6 Tailgate Brake Light Camera



4 Pin aviation connection
TV system: PAL
Output resolution: 576i
Mirror image: Yes – fixed

FPS: 30
Viewing angle: 130°(H) 110°(V)
Image Device: CMD-III

Operating voltage: 12V DC
Dimensions: 570mm(W) 120mm(D) 60mm(H)

FPS: 25
Viewing angle: 95°
Image Device: 1/3 NVP SONY CCD

Operating voltage: 12V DC
Dimensions: 232mm(W) 160mm(D) 80mm(H)

FPS: 25
Viewing angle: 99°(D)
Image device: 1/4" CMOS
Operating temperature: -30 ~+70

RH95%
Dimensions: 232mm(W) 160mm(D) 80mm(H)

FPS: 25
Viewing angle: 110°
Image Device: CMD-III

Operating voltage: 12V DC
Dimensions: 338mm(W) 37mm(D) 25mm(H)



MONITORS

AHD-75M-STALK

7" Mirror Monitor Stalk



TV system: PAL / NTSC / AHD
Screen size: 7"
Resolution: 1024 X 600
Contrast ratio: 500:1
Aspect ratio: 16:9
Brightness: 400cd/m²
Viewing angle: U: 50° D:70° R/L 70°/70°
4 pin aviation inputs: 2
Trigger inputs: 1
Operating voltage: 12V DC
Dimensions: 250mm (W) 21mm (D) 109mm (H)

WMIR-M12

12.3" Electronic Wing Mirror



TV system: PAL / NTSC / AHD
Screen size: 12.3"
Resolution: 1920 X 720
Contrast ratio: 500:1
Aspect ratio: 8:3
Brightness: 750cd/m²
Viewing angle: U: 85° D:85° R/L 85°/85°
4 pin aviation inputs: 2
Trigger inputs: 1
Operating voltage: 12V / 24V DC
Dimensions: 160mm (W) 31.5mm (D) 343mm (H)

ISO9001

We are extremely proud and delighted to have passed and been awarded The Management System Certification ISO9001 for:

THE PROVISION OF THE DESIGN, DEVELOPMENT AND DELIVERY OF IT PROJECTS





THE VEHICLE SAFETY EXPERTS

CKO INTERNATIONAL

THE HAWTHORN CENTRE

ELMGROVE ROAD

HARROW, HA1 2RF

+44 (0) 20 8863 8333

C-KO.CO.UK SALES@C-KO.CO.UK

