

Product Specification

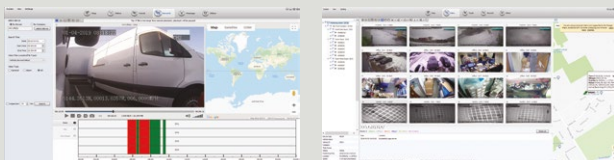


4G⁺



LiveView >>

- Vehicle tracking by GPS – current location and speed of the vehicle can be seen.
- Alerts regarding faults such as geo-fencing breaches, failing hardware, switch to SD card recording, video loss on channel e.g faulty camera
- Remote download footage can be viewed through mobile phone or PC
- Historical footage – downloadable footage for the last month
- Change settings remotely – settings such as camera resolution, date, time and recording settings can be changed remotely. Software updates can also be sent remotely.
- Multiple vehicle viewing – the interface can show 32 live and recorded streams at one time, meaning that many fleets can be managed on a single interface.



LiveView >>

- SOS button – The introduction of our SOS button on the DVR means if an incident occurs the driver can push it and central office will be immediately notified and able to investigate the issue. As well as time and date, a video clip of between 1 to 2 minutes can be saved on the server from when the alarm is pushed on the device.
- Geofencing – multiple fences can be applied and notifications will alert the user when a vehicle enters or leaves those zones. Not only does this provide an anti-theft security feature, businesses can also use geofencing to monitor employees in the field, automate time cards and keep track of individual vehicles over particular time periods.

